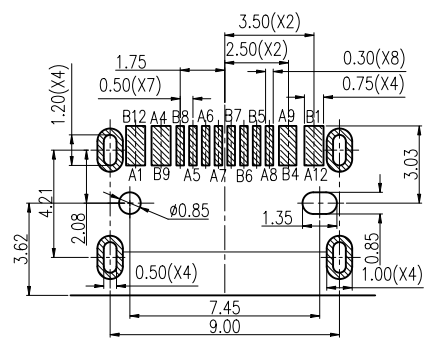
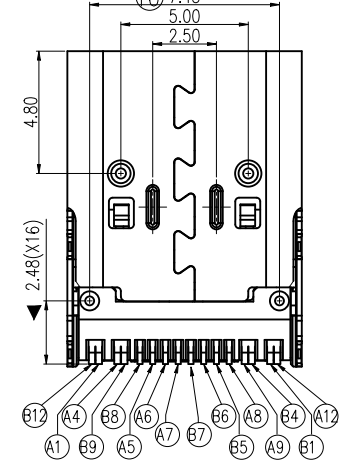
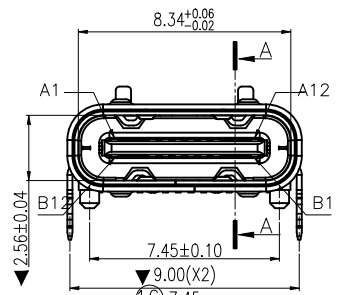
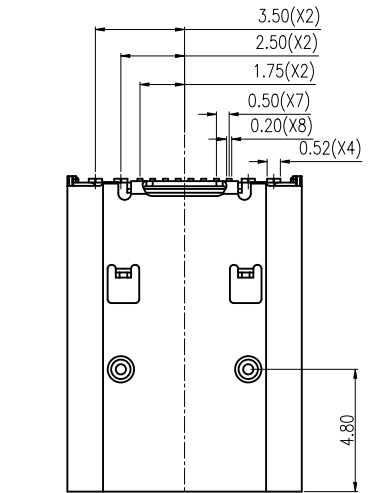
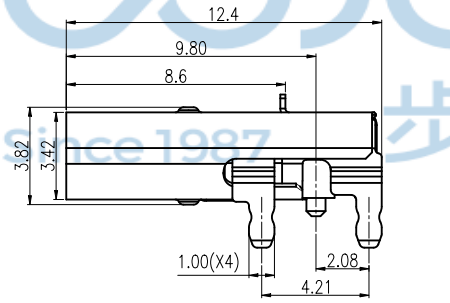
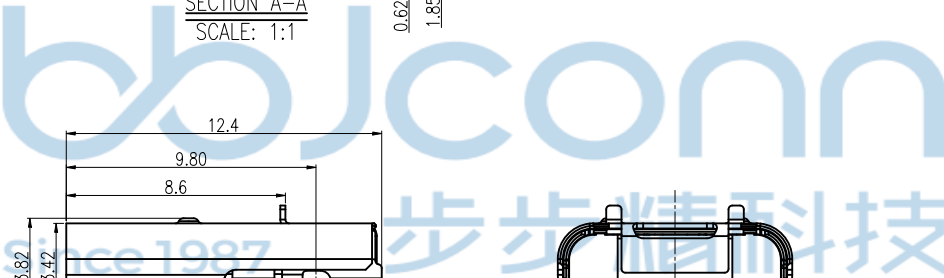
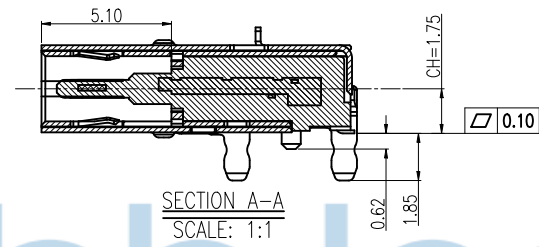
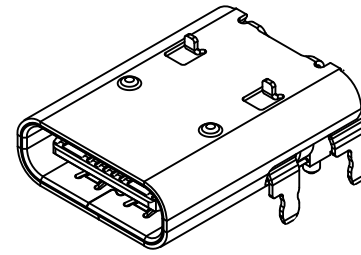


REV	ECN NO	CONTENT	DATE	ENGINEER
AO		INITIAL RELEASE	/	LYX

NOTES:  
 1.MATERIALS:  
 SHELL: STAINLESS STEEL;  
 MIDDLE CONTACT: STAINLESS STEEL;  
 HOUSING: THERMOPLASTIC, UL94-V0, BLACK;  
 CONTACT: COPPER ALLOYS;  
 2.PLATING:  
 CONTACT: 50~100u" Min. NICKEL UNDERPLATING OVERALL;  
 PLATED GOLD 30u" Min. ON CONTACT AREA,  
 OR REFERENCE PART NO. CODE;  
 PLATED MATTE Sn 60~150u" MIN. ON SOLDER AREA;  
 SHELL: PLATED NICKEL;  
 3.ELECTRICAL CHARACTERISTICS:  
 LOW LEVEL CONTACT RESISTANCE: 40mΩ Max.;  
 INSULATION RESISTANCE: 100MΩ Min.;  
 DIELECTRIC WITHSTANDING VOLTAGE: 100 VAC;  
 CONTACT CURRENT RATING: 5A Max;  
 4.MECHANICAL CHARACTERISTICS:  
 INSERTION FORCE: 5~20N;  
 EXTRACTION FORCE: 8~20N;  
 DURABILITY: 10000 CYCLES;  
 5.IR REFLOW CONDITION PEAK TEMPERATURE: 260°C~10S



A12	GND	B1	GND
A11		B2	
A10		B3	
A9	VBUS1	B4	VBUS
A8	SBU1	B5	CC2
A7	Dn1	B6	Dp2
A6	Dp1	B7	Dn2
A5	CC1	B8	VBUS2
A4	VBUS	B9	VBUS
A3		B10	
A2		B11	
A1	GND	B12	GND
PIN	Signal Name	PIN	Signal Name

THIS DOCUMENT IS THE SOLE PROPERTY OF **bbJconn Technology Co., Ltd.** 深圳市步步精科技有限公司

BBJconn Technology Co., Ltd. Corporation AND SHOULD NOT BE USED IN WHOLE PRIOR WRITTEN PERMISSION.

PDWG NO: 0366-2

NAME: TYPE-C 16P 母座 板上四脚插 带柱 SMT 带弹 L=12.4 CH=1.75 带屏蔽壳

APPD: JM\_Zheng  
CHKD: Tang  
DR: LYX

PJ NO: 126-221-160019-N5G  
SIZE: A4  
FINISH: SEE NOTES  
SCALE: N/A

MAT'L: SEE NOTES  
REV: A0  
UNIT: mm  
PAGE: 1/2