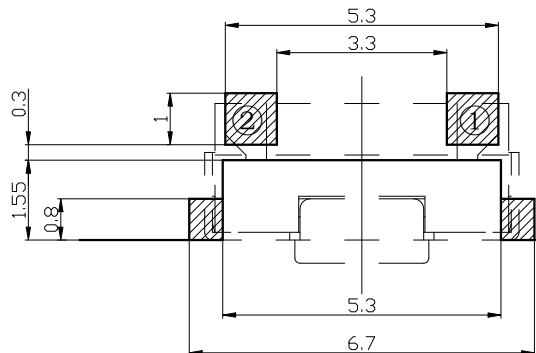
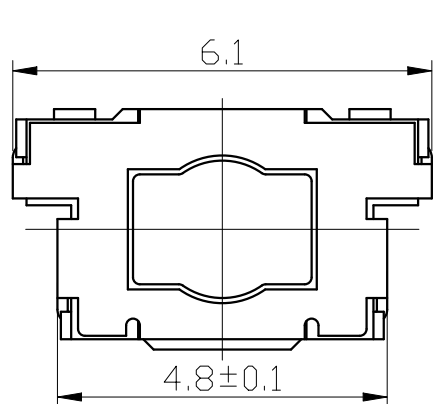
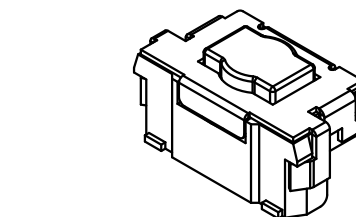
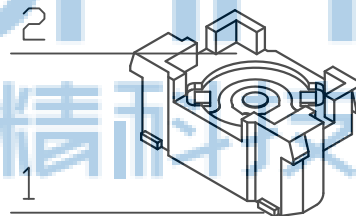
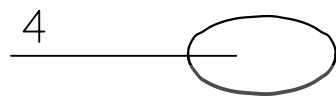
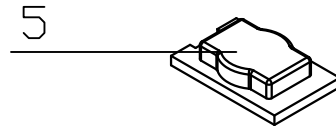
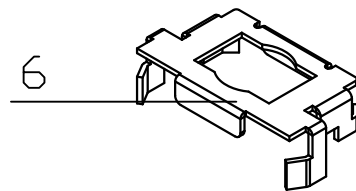
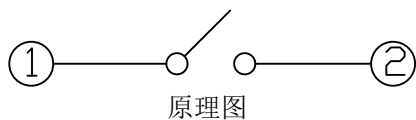
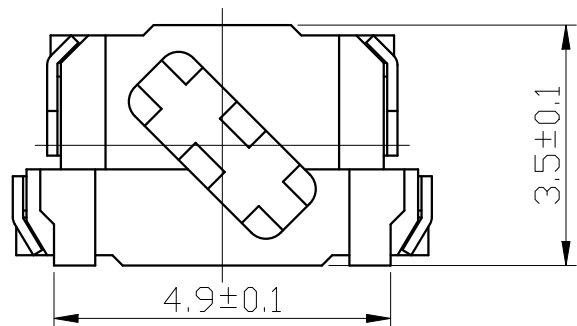
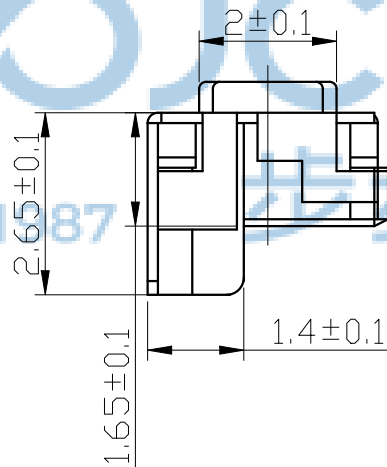
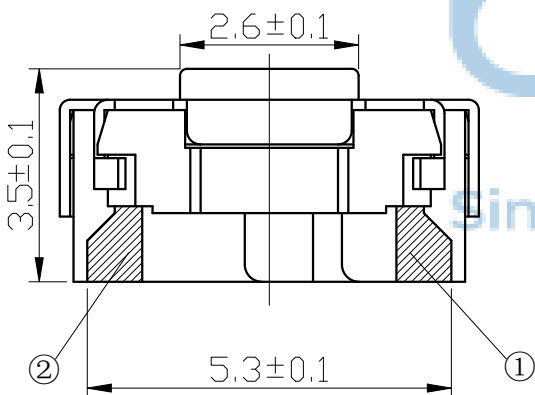


REV.	ECN NO	CONTENT	DATE	ENGINEER
A0				



安装参考图



3D轴测图



- 技术要求:
1. 塑料件表面光洁无划伤, 水花, 变形, 影响外观及性能等缺陷。
 2. 额定电流: 50mA, 12V DC, 绝缘电阻100MΩ min, 100V DC, 介电强度250V AC for 1min, 接触电阻 200mΩ max 。
 3. 开关手感明显, 档位清晰可靠, 无卡滞现象, 消除外力后, 应能快速回位。

序号	名称	材料	数量	备注
6	盖板	磷铜0.15	1	镀银
5	按钮	LCP黑	1	
4	防水膜	聚酰亚胺0.035	1	
3	簧片	进口不锈钢覆银	1	外购
2	底座	LCP黑	1	
1	卡件	磷铜0.2	1	镀银

THIS DOCUMENT IS THE SOLE PROPERTY OF BBJconn Technology Co., Ltd. Corporation AND SHOULD NOT BE USED IN WHOLE OR IN PART WITHOUT PRIOR WRITTEN PERMISSION. PDWG:NO: 0278-1

深圳市步步精科技有限公司

NAME: 轻触开关 3x6x3.5 沉板 不锈钢弹片 260GF 黑柄 热封编带 (R2-02)

APPD. JM_Zheng

CHKD. LYX

DR. TSP

PJ. NO.: TS.35.58-J1-38-01

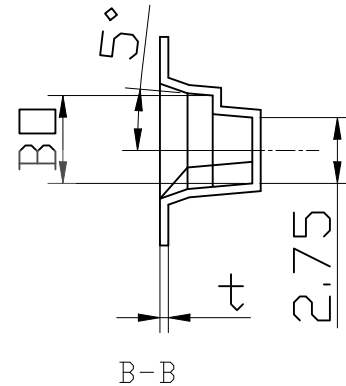
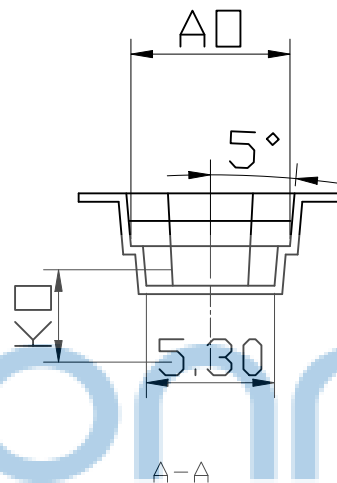
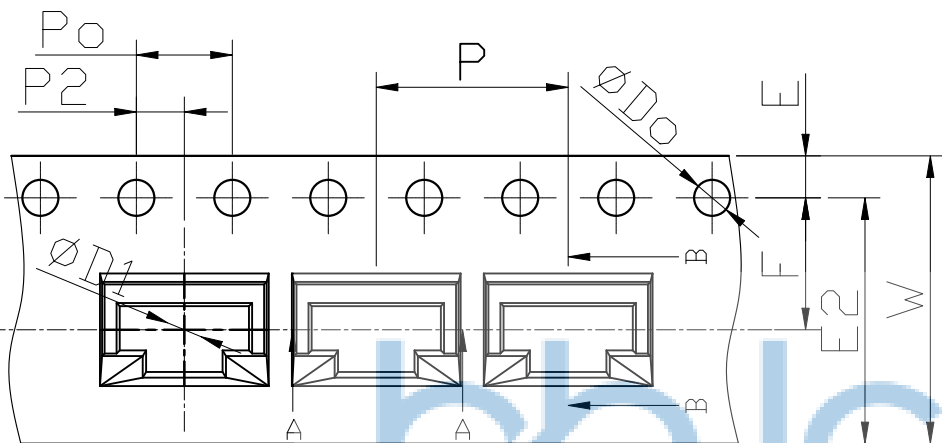
SIZE: A4 DRW NO.:

FINISH: SEE NOTES MAT'L.: SEE NOTES

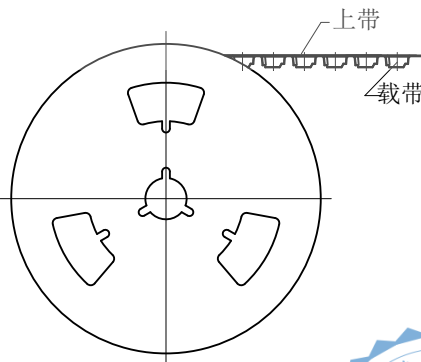
SCALE: N/A REV.: A0 UNIT: mm PAGE: 1/2

说明:

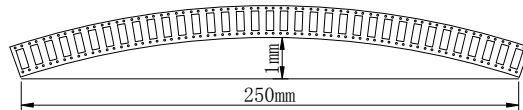
- 10个边孔的累计公差不能超过±0.2mm.
- 材料规格: PS 白色料, 厚度0.35 mm.
- 13英寸卷轮卷装长度16.512米 (零件包装长度16米).
- 13英寸卷轮包装零件总颗数:2064颗 (实际包装零件颗数:2000颗).



卷装示意图仅供参考



5. 所有尺寸设计参照EIA-481-C-2003.
6. 载带在250mm长度以内最大弯曲度不超过1mm (见下图).



尺寸栏	
E	1.75±0.10
E2	10.25 MIN
F	5.50±0.10
P2	2.00±0.10
ØD0	1.50± ^{0.10} / _{0.00}
ØD1	
P0	4.00±0.10
10P0	40.00±0.20
W	12.00±0.30
P	8.00±0.10
A0	6.60±0.10
B0	3.65±0.10
K0	3.85±0.10
t	0.35±0.05

生产参数	
模数	172 模
颗数	2064 颗
卷轮	13"/12
包装数	2000 颗



THIS DOCUMENT IS THE SOLE PROPERTY OF BBJconn Technology Co., Ltd. Corporation AND SHOULD NOT BE USED IN WHOLE OR IN PART WITHOUT PRIOR WRITTEN PERMISSION.		深圳市步步精科技有限公司	
.X: ±0.38 .XX: ±0.25 .XXX: ±0.13		X': ±3" X'': ±2" X'X': ±1"	
APPD.	JM_Zheng	NAME: 轻触开关 3x6x3.5 沉板 不锈钢弹片 260GF 黑柄 热封编带 (R2-02)	
CHKD.	LYX	PJ. NO.: TS.35.58-J1-38-01	
DR.	TSP	SIZE: A4 DRW NO.:	
PDWG.NO: 0278-1		FINISH: SEE NOTES MAT'L.: SEE NOTES	
		SCALE: N/A REV.: A0 UNIT: mm PAGE: 2/2	