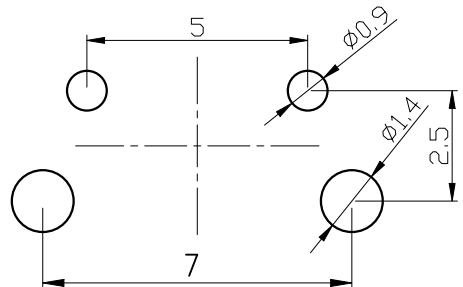
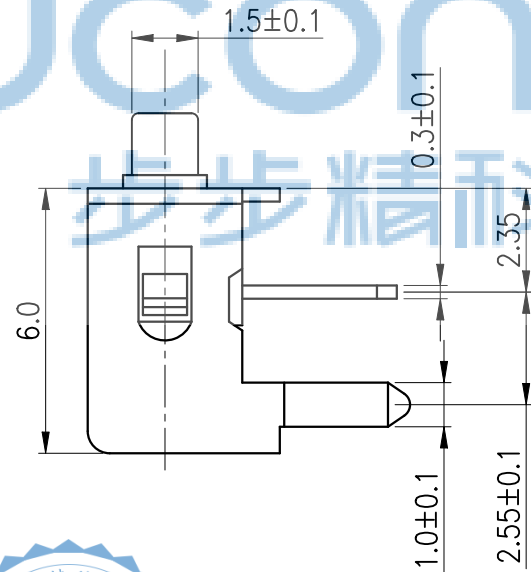
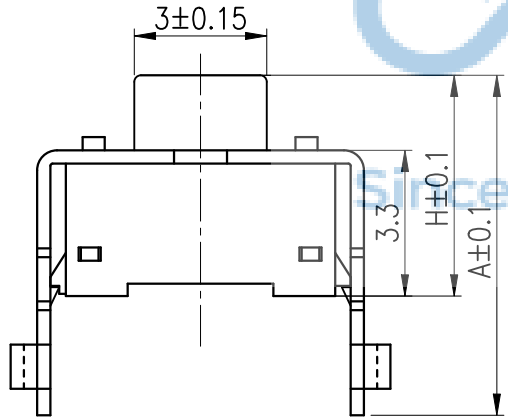
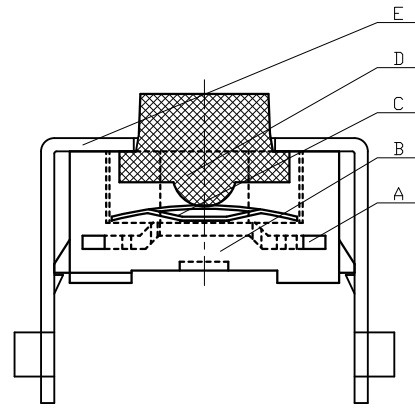
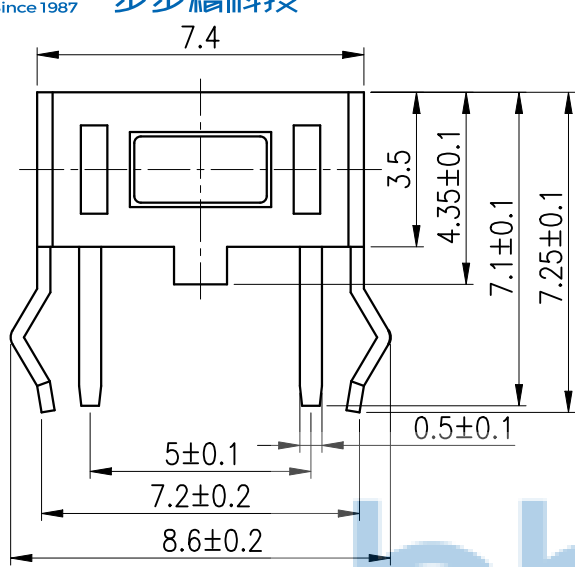


REV.	ECN NO	CONTENT	DATE	ENGINEER
AO				



技术要求:

1. 塑料件表面光洁无划伤, 水花, 变形, 影响外观及性能等缺陷。
2. 额定电流: 50mA. 12V DC, 绝缘电阻100MΩ min, 100V DC, 介电强度250V AC for 1min, 接触电阻 100mΩ max。260° 高温后衰变值在初始值的 20%以内;
3. 开关手感明显, 档位清晰可靠, 无卡滞现象, 消除外力后, 应能快速回位。按力: 160/260±30GF

H		
4.3	5	7
A		
7	7.7	9.7



E	盖板	0.3铁皮	1	镀锡
D	按钮	PPA白	1	
C	簧片	进口不锈钢覆银	1	
B	底座	PPA黑	1	
A	卡件	黄铜厚0.3	1	镀银
序号	名称	材料	数量	备注



THIS DOCUMENT IS THE SOLE PROPERTY OF BBJconn Technology Co., Ltd. Corporation AND SHOULD NOT BE USED IN WHOLE OR IN PART WITHOUT PRIOR WRITTEN PERMISSION. PDWG.NO: 0278-1

深圳市步步精科技有限公司

NAME: 轻触开关 3x6x7.0 两脚侧按 带支架 方头白柄 不锈钢弹片 260GF

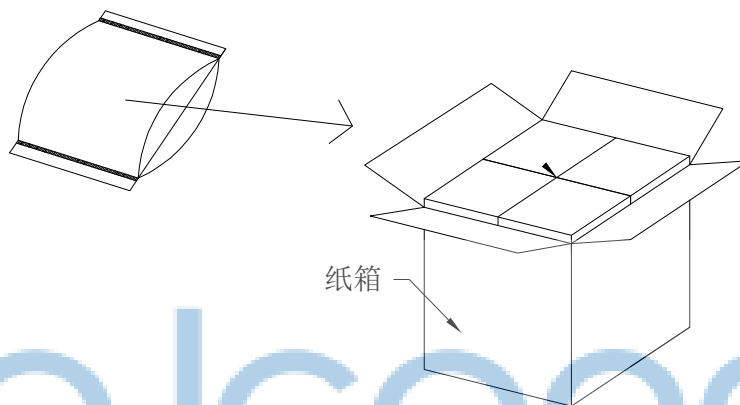
PJ. NO.: TS.35.17-42-38-01
SIZE: A4 | DRW NO.:

FINISH: SEE NOTES | MAT'L.: SEE NOTES
SCALE: N/A | REV.: AO | UNIT: mm | PAGE: 1/2

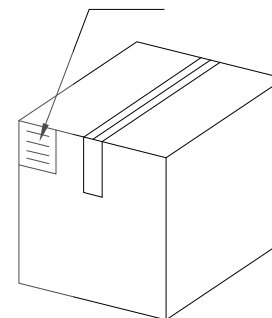
APPD.	JM_Zheng
CHKD.	LYX
DR.	TSP

REV.	ECN NO.	CONTENT	DATE	ENGINEER
AO				

PE袋规格: 260*185



成品标签



1. 包装要求:

- 1.1 每个PE袋包装1000pcs;
- 1.2 每1袋放一小纸盒;
- 1.3 每20个小纸盒放一个纸箱, 共计20000pcs;
- 1.4 纸箱外贴上标签



THIS DOCUMENT IS THE SOLE PROPERTY OF BBJconn Technology Co.,Ltd. Corporation AND SHOULD NOT BE USED IN WHOLE OR IN PART WITHOUT PRIOR WRITTEN PERMISSION.		深圳市步步精科技有限公司	
.X: ±0.38 .XX: ±0.25 .XXX: ±0.13 X*: ±3" .X*: ±2" .XX*: ±1"		NAME: 轻触开关 3x6x7.0 两脚侧按 带支架 方头白柄 不锈钢弹片 260GF	
APPD.	JM_Zheng	PJ. NO.: TS.35.17-42-38-01 SIZE: A4 DRW NO.:	FINISH: SEE NOTES MAT'L.: SEE NOTES
CHKD.	LYX		
PDWG.NO:	0278-1	DR.	TSP
		SCALE: N/A	REV.: AO UNIT: mm PAGE: 2/2