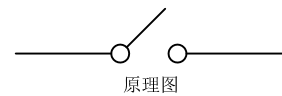
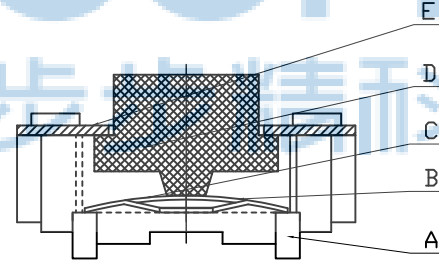
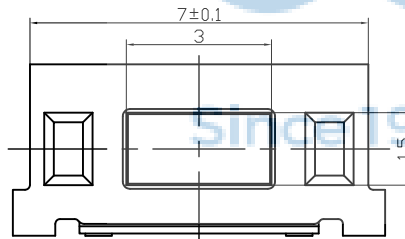
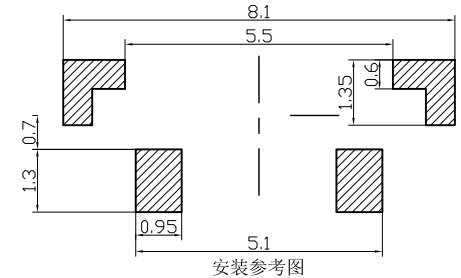
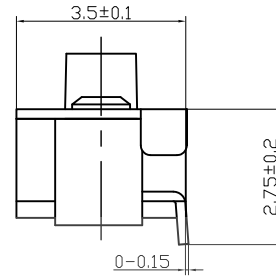
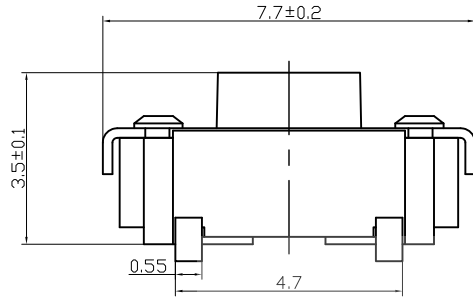


REV.	ECN NO	CONTENT	DATE	ENGINEER
A0		Initial release	/	SGF



- 技术要求:
1. 零部件表面光洁无划伤, 水花, 变形, 影响外观及性能等缺陷。
 2. 额定电流: 50mA. 12V DC, 绝缘电阻100MΩ min, 100V DC, 介电强度250V AC for 1min, 接触电阻 200mΩ max。操作温度-30° +70°。260° 高温后衰变值在初始值的20%内;
 3. 开关手感明显, 档位清晰可靠, 无卡滞现象, 消除外力后, 应能快速回位。

序号	名称	材料	数量	备注
E	盖板	黄铜0.2T	1	镀银
D	按钮	LCP 黑	1	
C	簧片	进口不锈钢覆银	1	
B	底座	LCP 白	1	
A	卡件	黄铜0.2Y	1	镀银

THIS DOCUMENT IS THE SOLE PROPERTY OF BBJconn Technology Co.,Ltd. Corporation AND SHOULD NOT BE USED IN WHOLE OR IN PART WITHOUT PRIOR WRITTEN PERMISSION.

PDWG.NO: 0278-1

APPD. JM_Zheng

CHKD. LYX

DR. SGF

深圳市步步精科技有限公司

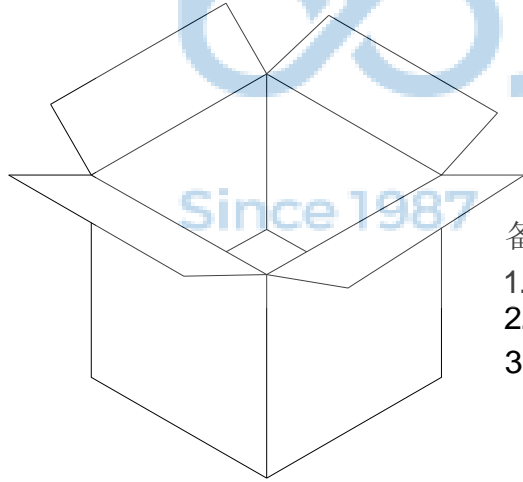
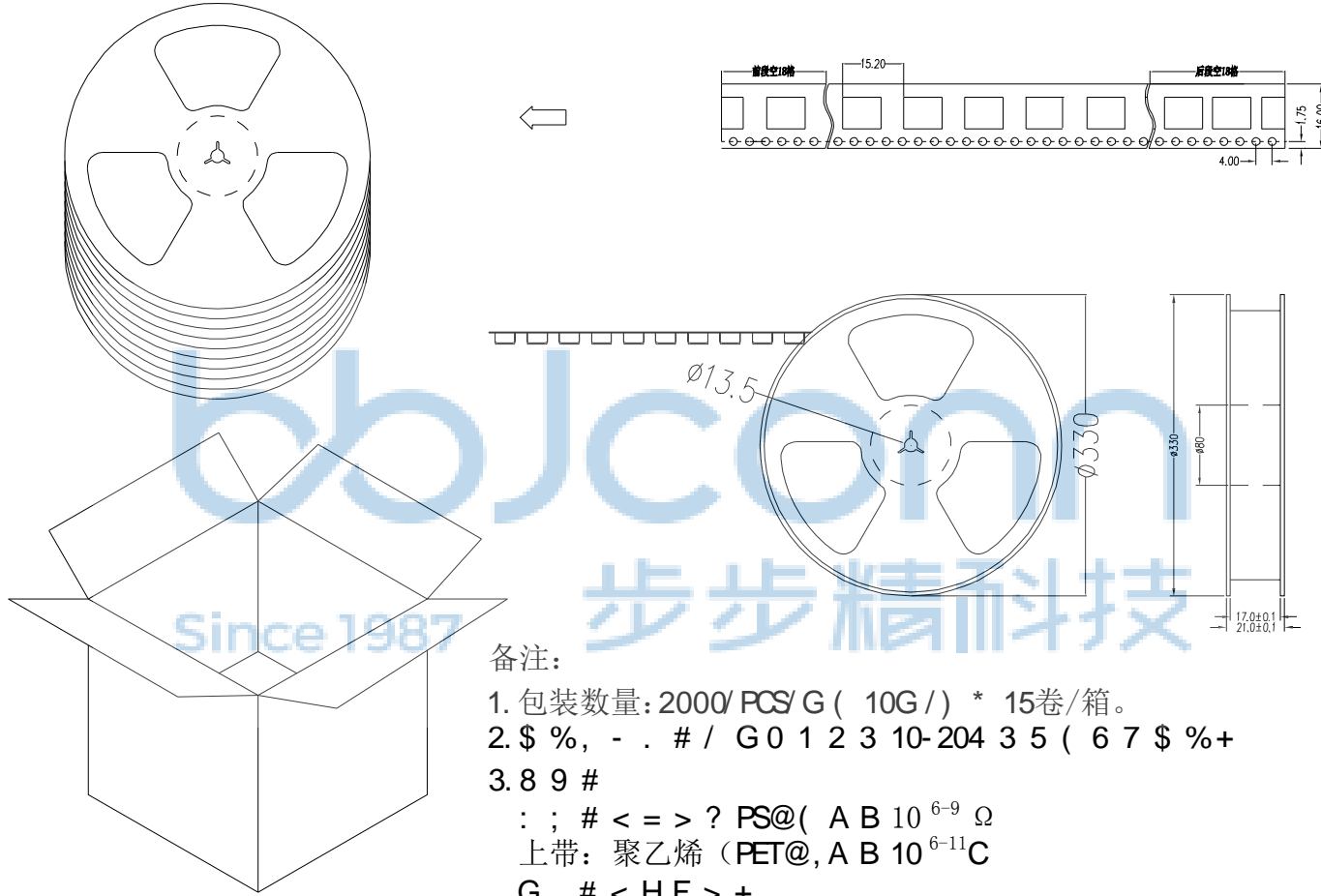
NAME: 轻触开关 3x6x3.5 侧按无柱 不锈钢弹片 260g 黑柄 冷封编带

PJ. NO.: TS. 10. 58-41-38-01

SIZE: A4 DRW NO.:

FINISH: SEE NOTES MAT'L.: SEE NOTES

SCALE: N/A REV.: A0 UNIT: mm PAGE: 1/2



备注:

1. 包装数量: 2000/ PCS/ G (10G /) * 15卷/箱。
2. \$ % , - . # / G 0 1 2 3 10-204 3 5 (6 7 \$ % +
3. 8 9 #
: ; # < = > ? PS@ (A B 10⁶⁻⁹ Ω
上带: 聚乙烯 (PET@, A B 10⁶⁻¹¹C
G # < HF > +
I) J 5 # 345* 345* 23MM
I) J 5 # 345* 345* 35MM

THIS DOCUMENT IS THE SOLE PROPERTY OF BBJconn Technology Co.,Ltd. Corporation AND SHOULD NOT BE USED IN WHOLE OR IN PART WITHOUT PRIOR WRITTEN PERMISSION.		\$! c 2!•!•2!0 ° 9L€ œ (
PDWG.NO: 0278-1		.X: ±0.38 .XX: ±0.25 .XXX: ±0.13	X': ±3" .X': ±2" .XX': ±1"
APPD.	JM_Zheng	NAME: Çá ¥¿ª¹Ø 3x6x3.5 ²àª¹bÒù²»Đà, ÖµÆ- 260g 0Úú Áä:â±à'ø	
CHKD.	LYX	PJ. NO.: TS.10.58-41-38-01 SIZE: A4 DRW NO.:	
DR.	SGF	FINISH: SEE NOTES MAT'L.: SEE NOTES SCALE: N/A REV.: A0 UNIT: mm PAGE: 2/2	