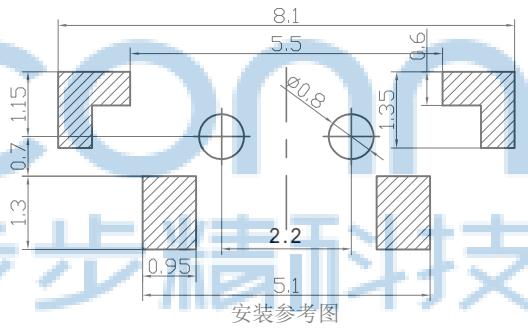
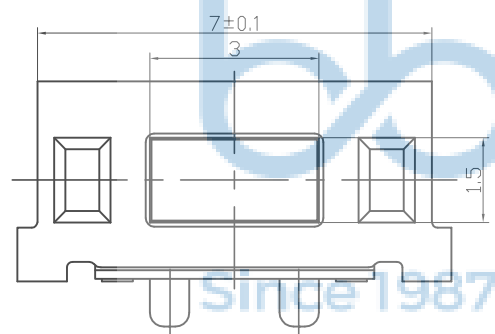
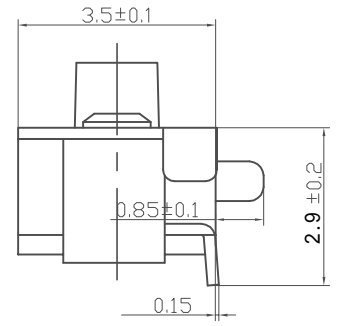
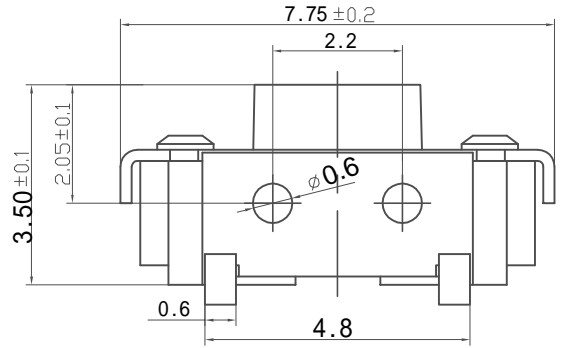
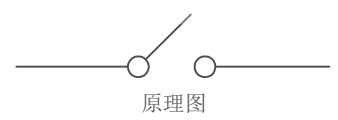


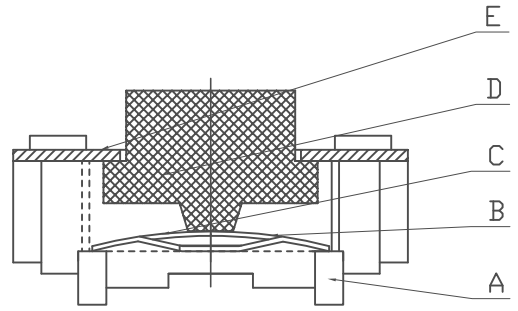
REV.	ECN NO	CONTENT	DATE	ENGINEER
A0		Initial release	/	SGF



安装参考图



- 技术要求:
1. 零部件表面光洁无划伤, 水花, 变形, 影响外观及性能等缺陷。
 2. 额定电流: 50mA. 12V DC, 绝缘电阻100MΩ min, 100V DC, 介电强度250V AC for 1mi n, 接触电阻 200mΩ max
高温后衰变值在初始值的20%内;
 3. 开关手感明显, 档位清晰可靠, 无卡滞现象, 消除外力后, 应能快速回位。按力: 160 ± 30GF。
 4. 行程: 0.2 ± 0.1mm
 5. 耐久: 30000 次
 6. 工作温度: -20 ~70
 7. 储存温度: -30 ~80



E	盖板	黄铜0.2T	1	镀银
D	按钮	LCP黑	1	
C	簧片	进口不锈钢覆银	1	
B	底座	LCP白	1	
A	卡件	黄铜0.2Y	1	镀银
序号	名称	材料	数量	备注



THIS DOCUMENT IS THE SOLE PROPERTY OF BBJconn Technology Co.,Ltd. Corporation AND SHOULD NOT BE USED IN WHOLE OR IN PART WITHOUT PRIOR WRITTEN PERMISSION.

PDWG.NO: 0278-1

DR. SGF

APPD. JM_Zheng

CHKD. LYX

NAME: 轻触开关 3x6x3.5 侧按带柱 0.6柱 不锈钢弹片 160G LCP料黑柄

PJ. NO.: TS.08.58-42-38-01

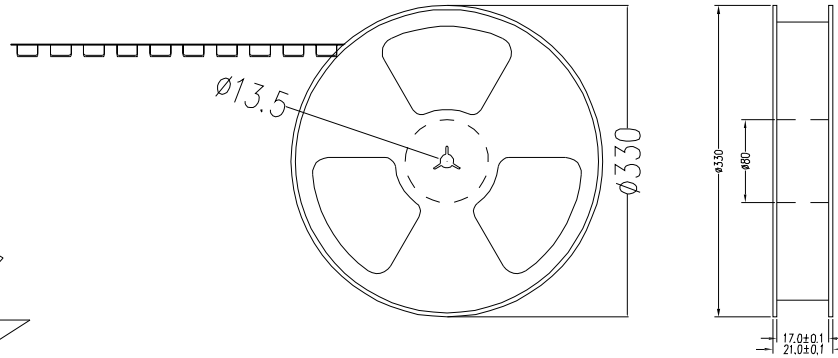
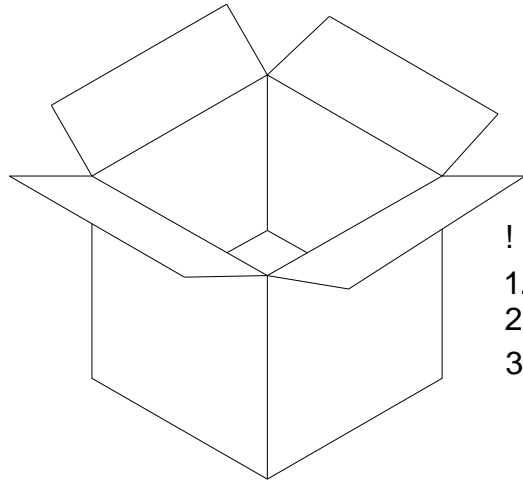
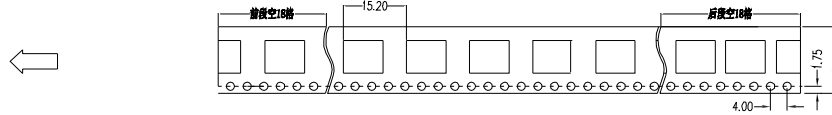
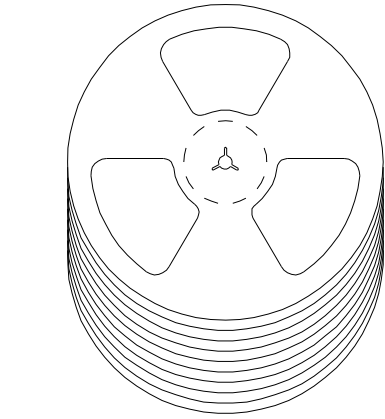
SIZE: A4 DRW NO.:

FINISH: SEE NOTES MAT'L.: SEE NOTES

SCALE: N/A REV.: A0 UNIT: mm PAGE: 1/2

深圳市步步精科技有限公司

REV.	ECN NO	CONTENT	DATE	ENGINEER
A0		Initial release	/	SGF



! " #

1. \$ % & ' #2000/ PCS/ G (10G /) * 15G /) +
2. \$ %, - . # / G 0 1 2 3 10-204 3 5 (6 7 \$ % +

3. 8 9 #

: ; # < = > ? PS@ (A B 10⁶⁻⁹ C

D E # < F > ? PET@, A B 10⁶⁻¹¹ C

G # < H F > +

I) J 5 # 345*345*23MM

I) J 5 # 345*345*35MM

THIS DOCUMENT IS THE SOLE PROPERTY OF BBJconn Technology Co.,Ltd. Corporation AND SHOULD NOT BE USED IN WHOLE OR IN PART WITHOUT PRIOR WRITTEN PERMISSION.		深圳市步步精科技有限公司 .X: ±0.38 X': ±3' NAME: .XX: ±0.25 X'': ±2' Çá ¥¿ ²¹ Ø 3x6x3.5 ²²à''²Øù 0.60ù ²»Đà.Öμ̄/E= 160G LCPÁü±± .XXX: ±0.13 XX': ±1'	
PDWG.NO: 0278-1	DR. SGF	APPD. JM_Zheng	PJ. NO.: TS.08.58-42-38-01 SIZE: A4 DRW NO.: FINISH: SEE NOTES MAT'L.: SEE NOTES SCALE: N/A REV.: A0 UNIT: mm PAGE: 2/2