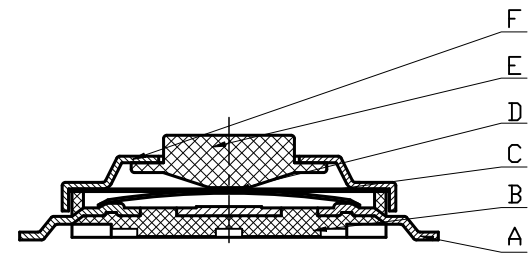
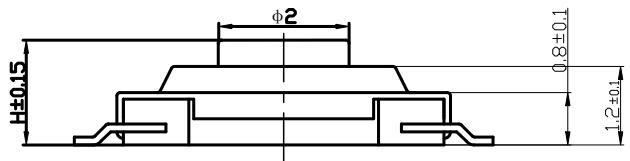


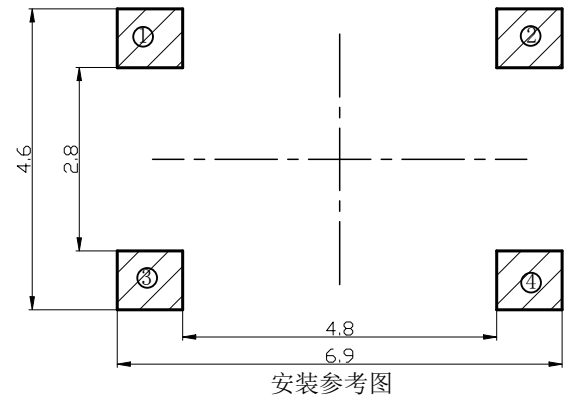
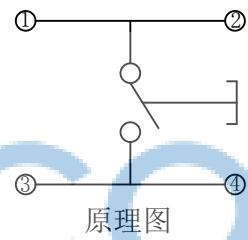
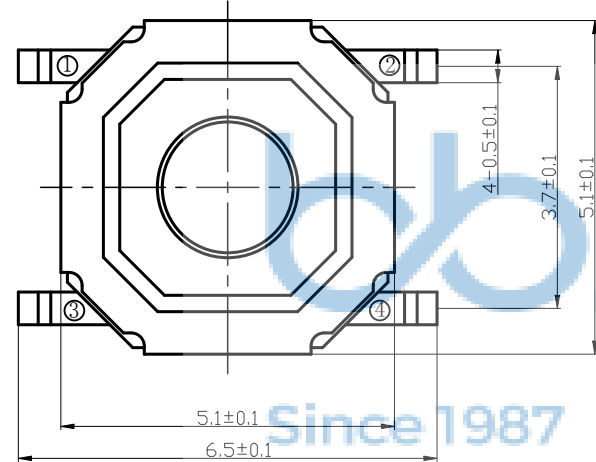
REV.	ECN NO	CONTENT	DATE	ENGINEER
A0				

技术要求:

1. 零部件表面光洁无划伤，水花，变形，影响外观及性能等缺陷。
2. 额定电流：50mA. 12V DC, 绝缘电阻100MΩmin, 100V DC, 介电强度250V AC for 1min, 接触电阻100mΩ max 。
3. 开关手感明显，档位清晰可靠，无卡滞现象，消除外力后，应能快速回位。
4. 按力：100gf±30gf



H						
1.5	1.6	1.7	1.8	1.9	2.0	2.5 3.0



序号	名称	材料	数量	备注
5	盖板	不锈钢0.13	1	酸洗
4	按钮	黄铜	1	酸洗
3	簧片	进口不锈钢覆银	1	8万
2	底座	LCP黑	1	
1	卡件	磷铜0.15	1	镀银

THIS DOCUMENT IS THE SOLE PROPERTY OF BBJconn Technology Co.,Ltd. Corporation AND SHOULD NOT BE USED IN WHOLE OR IN PART WITHOUT PRIOR WRITTEN PERMISSION.

PDWG:NO: 0278-1

深圳市步步精科技有限公司

NAME: 轻触开关 4x4x1.5 铜头贴片 不锈钢弹片 100gf

APPD. JM_Zheng

CHKD. TSP

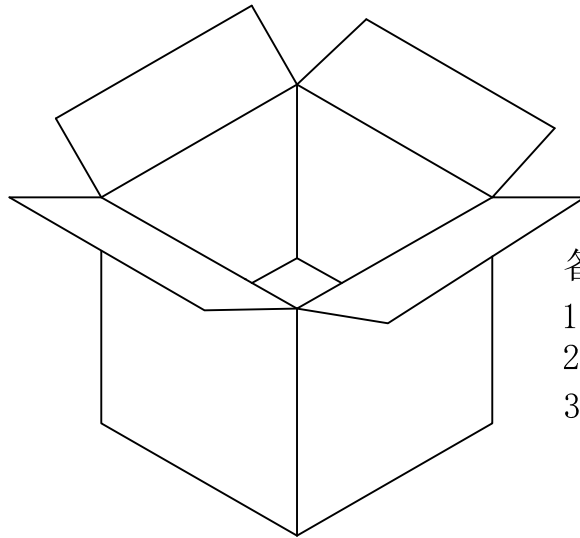
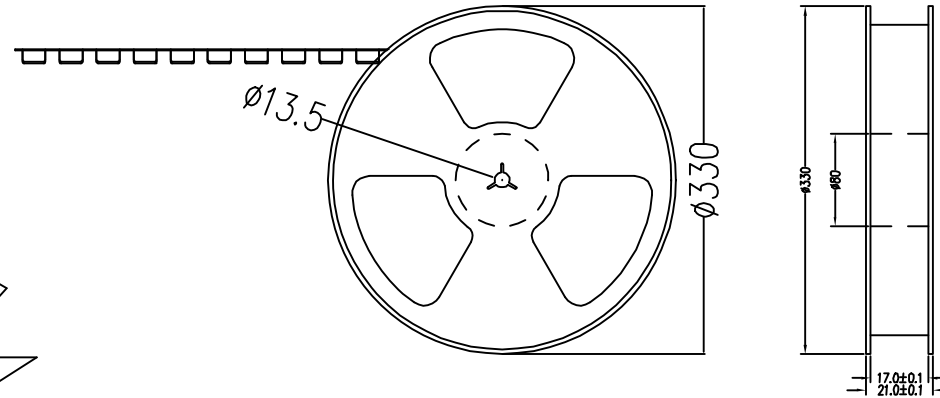
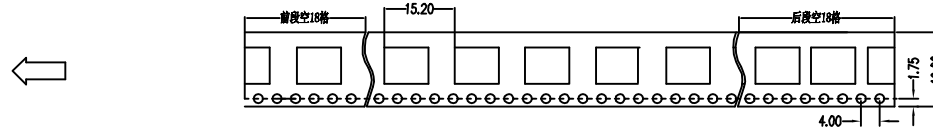
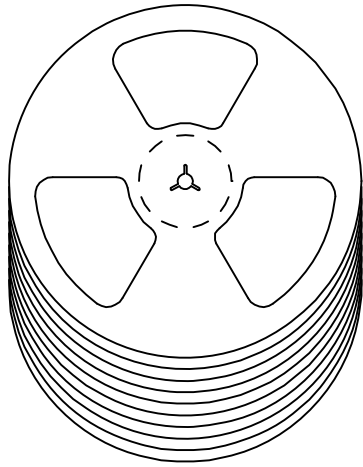
DR. LYX

PJ. NO.: 101-033-013001-Y5G

SIZE: A4 | DRW NO.:

FINISH: SEE NOTES | MAT'L.: SEE NOTES

SCALE: N/A | REV.: A3 | UNIT: mm | PAGE: 1/2



备注:

1. 包装数量: 4000/PCS/卷, 10卷/箱。
2. 包装袋长度: 每卷前后各空10-20个空格, 中间包装。
3. 材质:
载体: 聚丙烯 (PS), 阻抗 $10^{6-9} \Omega$
上带: 聚乙烯 (PET), 阻抗 $10^{6-11} \Omega$
卷盘: 聚苯乙烯。

纸箱规格: 345*345*23MM

纸箱规格: 345*345*35MM

THIS DOCUMENT IS THE SOLE PROPERTY OF BBJconn Technology Co.,Ltd Corporation AND SHOULD NOT BE USED IN WHOLE OR IN PART WITHOUT PRIOR WRITTEN PERMISSION.		深圳市步步精科技有限公司 .X: ±0.38 X': ±3" .XX: ±0.25 .X': ±2" .XXX: ±0.13 .XX': ±1"		NAME: 4x4x1.5 í-í-iùÆ-²»Đä_Öμ^-Æ- 100gf	
APPD.	JM_Zheng		PJ. NO.: 101-033-013001-Y5G		
CHKD.	TSP		SIZE: A4	DRW NO.:	
PDWG.NO:	0278-1	DR.	LYX	FINISH: SEE NOTES	MAT'L.: SEE NOTES
				SCALE: N/A	REV.: A3
				UNIT: mm	PAGE: 2/2