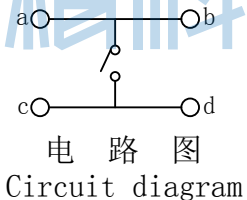
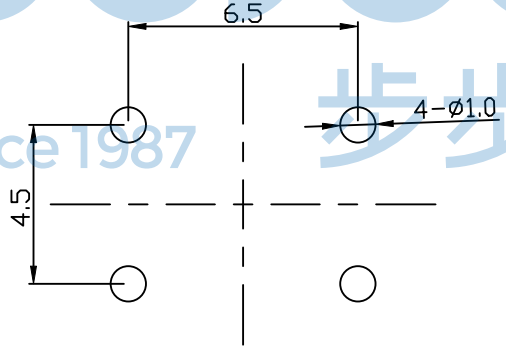
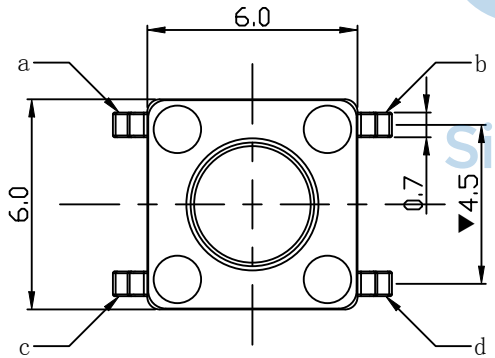
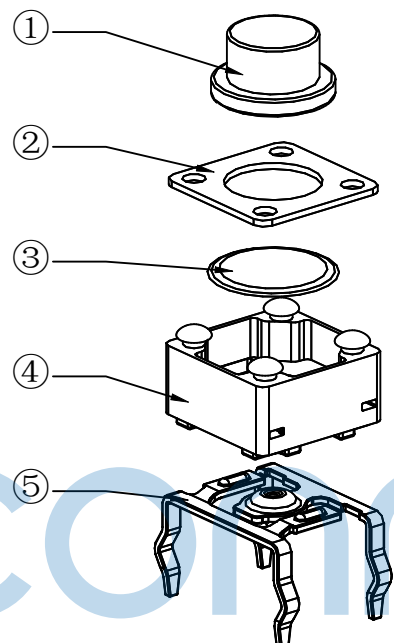
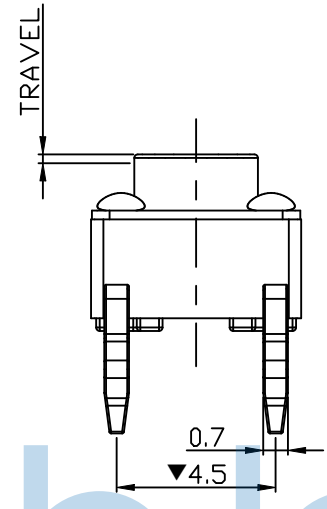
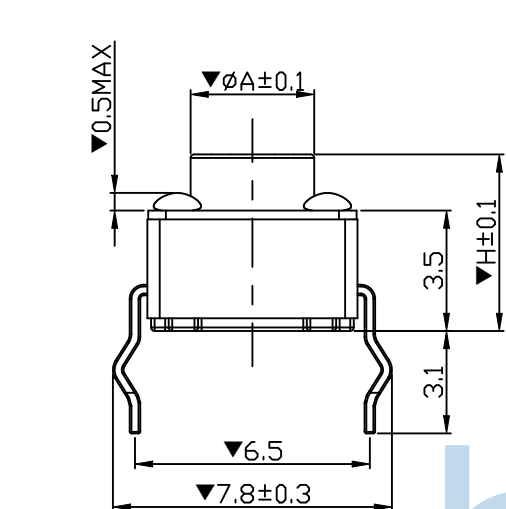


REV.	ECN NO	CONTENT	DATE	ENGINEER
A0		Initial release	/	TSP



线路板图
PCB Diagram

备注:

- 塑料件表面应光滑整洁, 无飞边、气泡、收缩、破裂等缺陷, 铆点无脱落、开花、大小不一等缺陷;
- 端子表面应清洁, 无锈蚀、变形、发黄、电镀不良等缺陷; 盖板应组装到位、无松动;
- ▼重要尺寸首件/自主/巡回等均需确认;
- 机械性能:
 1. 动作力: $250 \pm 50\text{gf} / 180 \pm 50\text{gf} / 100 \pm 50\text{gf}$;
 2. 寿命: 覆银铜弹片 50,000 CYCLES Min.; 不锈钢弹片 100,000 CYCLES Min.;

电气性能	
额定规格	DC12V/50mA
接触电阻	$\leq 100\text{m}\Omega$
绝缘电阻	$\geq 100\text{M}\Omega$
耐电压	AC250V/min

行程 (TRAVEL)	
260gf	0.25mm
160gf	0.20mm
100gf	

A (直径)	H (高度)	
$\phi 3.50$	4.3	
	4.5	
	4.7	
	4.8	
	5.0	
	$\phi 3.45$	5.5
	$\phi 3.35$	6.0
	$\phi 3.20$	6.5
	$\phi 3.10$	7.0
	$\phi 3.00$	7.5
8.0		
8.5		
9.0		
9.5		
10.0		
10.5		
11.0		
11.5		
12.0		
12.5		
13.0		
13.5		
14.0		
14.5		
15.0		
15.5		
16.0		
16.5		
17.0		
17.5		
18.0		
18.5		
19.0		
19.5		
20.0		
21.0		
22.0		
23.0		
24.0		
25.0		
26.0		
27.0		
28.0		
29.0		



序号	产品名称	材料规格	表面处理/颜色	数量
1	按钮	PPA		1
2	盖板	铁/铜	镀铜锡	1
3	弹片	覆银铜/不锈钢	镀银/无	1
4	底座	PPA	黑色	1
5	嵌件	高精铜	镀铜锡	1

THIS DOCUMENT IS THE SOLE PROPERTY OF BBJconn Technology Co., Ltd. Corporation AND SHOULD NOT BE USED IN WHOLE OR IN PART WITHOUT PRIOR WRITTEN PERMISSION.

PDWG.NO: 0472-1

APPD. JM_Zheng
CHKD. LYX
DR. TSP

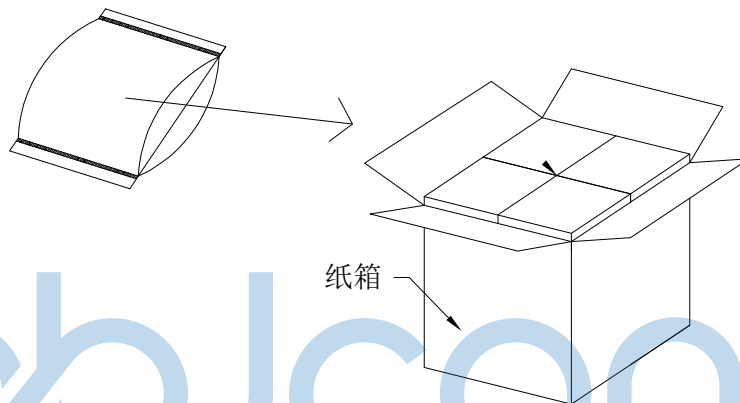
深圳市步步精科技有限公司

NAME: 轻触开关 6x6x9.0 弯脚直插 不锈钢弹片 260gf

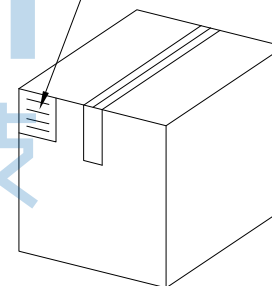
PJ. NO.: TS.01.21-21-3Z-01
SIZE: A4 | DRW NO.:
FINISH: SEE NOTES | MAT'L.: SEE NOTES
SCALE: N/A | REV.: A0 | UNIT: mm | PAGE: 1/2

REV.	ECN NO	CONTENT	DATE	ENGINEER
A0		Initial release	/	TSP

PE袋规格: 260*185



成品标签



1. 包装要求:

- 1.1 每个PE袋包装1000pcs;
- 1.2 每1袋放一小纸盒;
- 1.3 每20个小纸盒放一个纸箱, 共计20000pcs;
- 1.4 纸箱外贴上标签



THIS DOCUMENT IS THE SOLE PROPERTY OF BBJconn Technology Co.,Ltd. Corporation AND SHOULD NOT BE USED IN WHOLE OR IN PART WITHOUT PRIOR WRITTEN PERMISSION.		深圳市步步精科技有限公司 .X: ±0.38 .X': ±3" .XX: ±0.25 .X'': ±2" .XXX: ±0.13 .XX': ±1"		NAME: 轻触开关 6x6x9.0 弯脚直插 不锈钢弹片 260gf PJ. NO.: TS.01.21-21-3Z-01 SIZE: A4 DRW NO.: FINISH: SEE NOTES MAT'L.: SEE NOTES SCALE: N/A REV.: A0 UNIT: mm PAGE: 2/2	
APPD.	JM_Zheng				
CHKD.	LYX				
PDWG.NO:	0472-1	DR.	TSP		