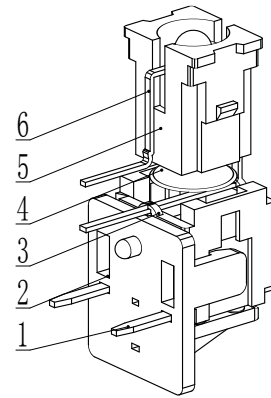
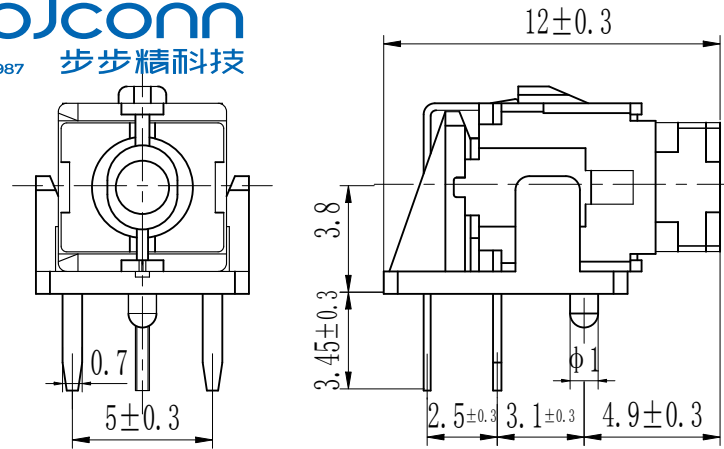


REV.	ECN NO	CONTENT	DATE	ENGINEER
AO				

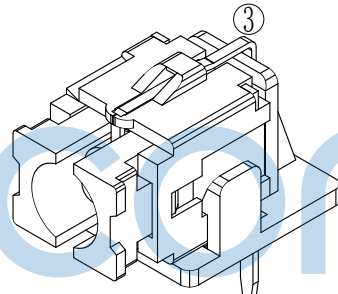
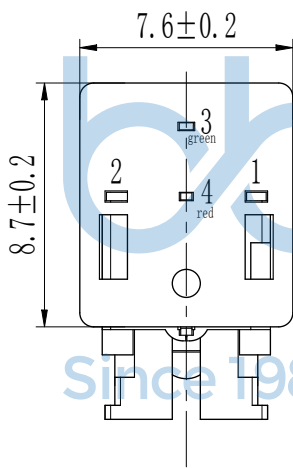
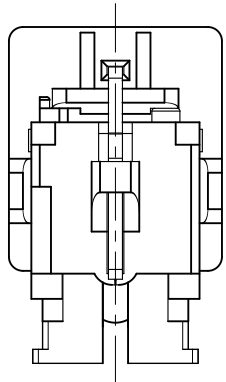
带灯轻触主要技术指标: Llluminated Tact Switch Main Specifications:

气候等级 Climate Grade	额定值 Rated Values	接触电阻 Contact Resistance	耐电压 Dielectric Strength	绝缘电阻 Insulation Resistance	动作力 Operating Force	寿命 Life	盐雾试验 Salt mist. Test
-25℃ 至 +75℃	30V DC, 30mA	≤0.05Ω	250V AC	≥100MΩ	▶260gf±50gf	10W times	12±1 hours.
-25℃ 至 +75℃	30V DC, 30mA	≤0.05Ω	250V AC	≥100MΩ	160gf±50gf	10W times	12±1 hours.



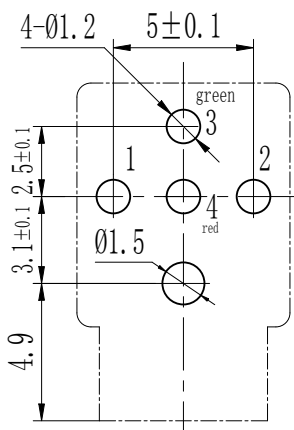
灯光选型表

双色灯光	灯光代码	电原理图
蓝/红双色光(宽脚蓝)	BL/R Blue/Red	
绿/红双色光(宽脚绿)	G/R Green/Red	
白/红双色光(宽脚白)	W/R White/Red	
蓝/黄双色光(宽脚蓝)	BL/Y Blue/yellow	
橙/蓝双色光(宽脚橙)	O/BL Orange/Blue	
...

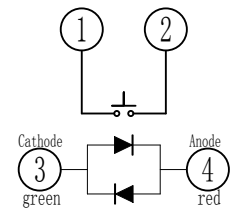


步步精科技

元件面孔位图



电原理图



序号	名称	材料	数量	镀层/颜色	备注
6	LED 灯		1	透明	A0670绿红双色绿长红短
5	按钮	PPA	1	瓷白	借A0630
4	弹片	不锈钢	1	Ag	借A0630
3	塑座	PPA	1	黑色	借A0630
2	定位板	PPA	1	黑色	A0670
1	卡件	H62	1	Ag	借A0630

THIS DOCUMENT IS THE SOLE PROPERTY OF BBJconn Technology Co., Ltd. Corporation AND SHOULD NOT BE USED IN WHOLE OR IN PART WITHOUT PRIOR WRITTEN PERMISSION.

深圳市步步精科技有限公司

NAME: 轻触开关 7.6x8.7x12 侧插 红蓝双色灯 不锈钢弹片 260gf 瓷白按钮

APPD. JM_Zheng

CHKD. LYX

DR. TSP

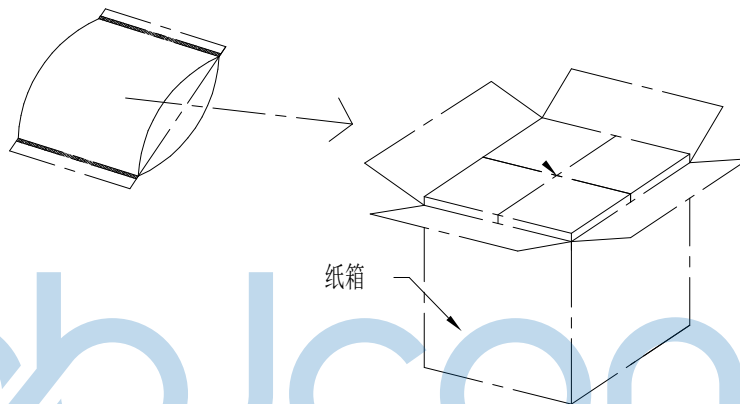
PJ. NO.: TS.43.27-41-3Z-01

SIZE: A4 DRW NO.:

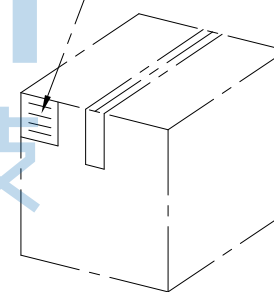
FINISH: SEE NOTES MAT'L.: SEE NOTES

SCALE: N/A REV.: AO UNIT: mm PAGE: 1/2

PE袋规格: 260*185



成品标签



1. 包装要求:

- 1.1 每个PE袋包装200pcs;
- 1.2 每1袋放一小纸盒;
- 1.3 每20个小纸盒放一个纸箱, 共计4000pcs;
- 1.4 纸箱外贴上标签



THIS DOCUMENT IS THE SOLE PROPERTY OF		深圳市步步精科技有限公司	
BBJconn Technology Co.,Ltd.		NAME: 轻触开关 7.6x8.7x12 侧插 红蓝双色灯 不锈钢弹片 260gf 瓷白按钮	
Corporation AND SHOULD NOT BE USED IN WHOLE OR IN PART WITHOUT PRIOR WRITTEN PERMISSION.	.X: ±0.38 .XX: ±0.25 .XXX: ±0.13	X': ±3" .X': ±2" .XX': ±1"	PJ. NO.: TS.43.27-41-3Z-01
APPD.	JM_Zheng		SIZE: A4 DRW NO.:
CHKD.	LYX	FINISH: SEE NOTES MAT'L.: SEE NOTES	
PDWG.NO: 0436-1	DR. TSP	SCALE: N/A	REV.: AO UNIT: mm PAGE: 2/2