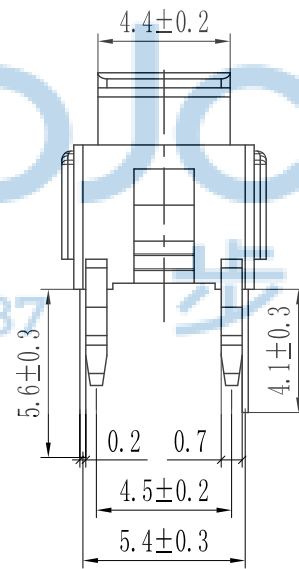
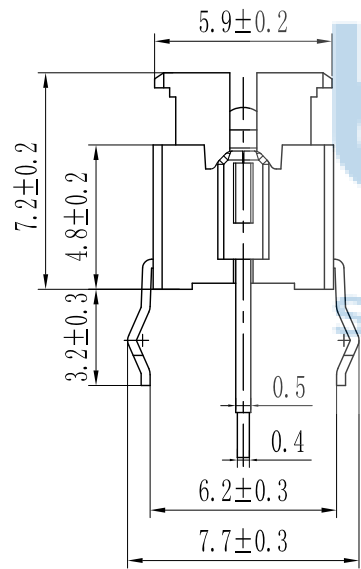
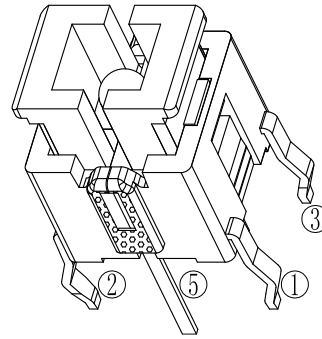
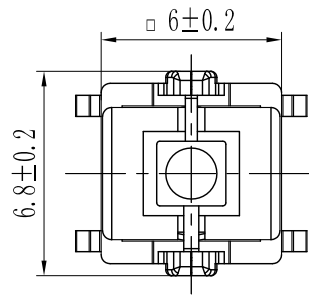


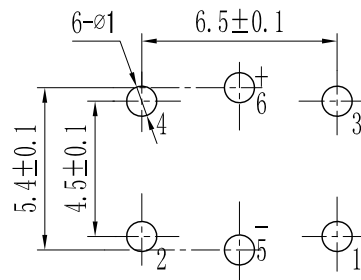
REV.	ECN NO.	CONTENT	DATE	ENGINEER
AO		Initial release	/	SGF

带灯轻触主要技术指标: Illuminated Tact Switch Main Specifications:

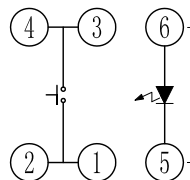
气候等级 Climate Grade	额定值 Rated Values	接触电阻 Contact Resistance	耐电压 Dielectric Strength	绝缘电阻 Insulation Resistance	动作力 Operating Force	寿命 Life	盐雾试验 Salt mist Test
-25°C 至 +75°C	30V DC, 30mA	≤0.05 Ω	250V AC	≥100M Ω	260gf±50gf	10W times	12±1 hours.
-25°C 至 +75°C	30V DC, 30mA	≤0.05 Ω	250V AC	≥100M Ω	160gf±50gf	10W times	12±1 hours.



元件面孔位图



电原理图



序号	名称	材料	数量	镀层/颜色	备注
5	LED灯				
4	按钮	PA66	1	瓷白	A0640
3	弹片	不锈钢	1	Ag	借A0630(φ4.5)
2	塑座	PA66	1	黑色	A0640(6x7.2H)
1	卡件	H62	1	Ag	A0640

THIS DOCUMENT IS THE SOLE PROPERTY OF BBJconn Technology Co.,Ltd. Corporation AND SHOULD NOT BE USED IN WHOLE OR IN PART WITHOUT PRIOR WRITTEN PERMISSION.

深圳市步步精科技有限公司

NAME: 轻触开关 6x6x7.2 不带灯 瓷白按钮 直插 不锈钢弹片 260gf

APPD. JM_Zheng

CHKD. LYX

DR. SGF

PJ. NO.: TS.01.60-21-3Z-01

SIZE: A4 DRW NO.:

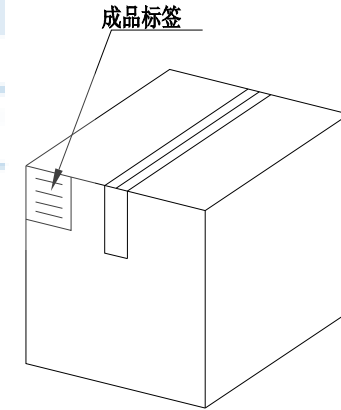
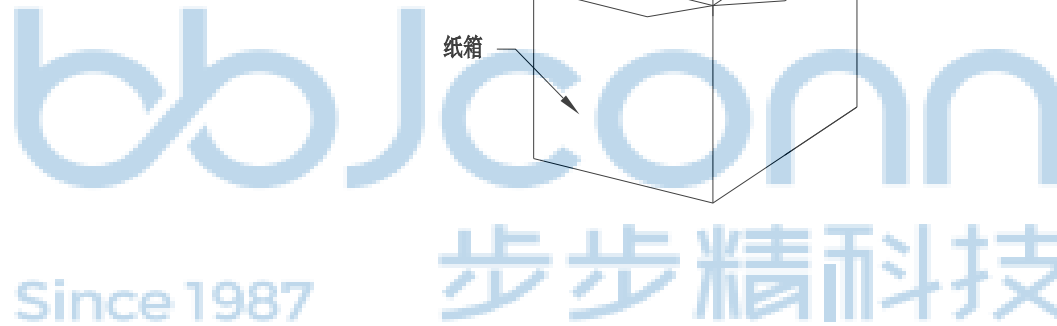
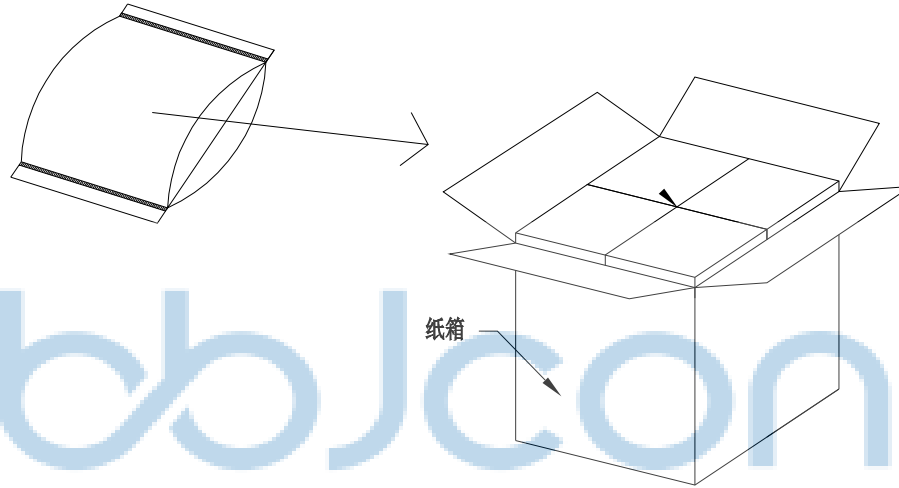
FINISH: SEE NOTES MAT'L.: SEE NOTES

SCALE: N/A REV.: A0 UNIT: mm PAGE: 1/2

PDWG.NO: 0436-1

REV.	ECN NO	CONTENT	DATE	ENGINEER
A0		Initial release	/	SGF

PE袋规格:***X*** (以实际出货为准)



1. 包装要求:

- 1.1 每PE袋包装500PCS;
- 1.2 每1袋放一小纸盒;
- 1.3 每20个小纸盒放一个纸箱, 共计10000PCS
- 1.4 纸箱外贴上标签



THIS DOCUMENT IS THE SOLE PROPERTY OF BBJconn Technology Co.,Ltd. Corporation AND SHOULD NOT BE USED IN WHOLE OR IN PART WITHOUT PRIOR WRITTEN PERMISSION.		深圳市步步精科技有限公司 .X: ±0.38 X': ±3' NAME: 轻触开关 6x6x7.2 不带灯 瓷白按钮 直插 不锈钢弹片260gf .XX: ±0.25 .X': ±2' .XXX: ±0.13 .XX': ±1'	
APPD.	JM_Zheng	PJ. NO.: TS.01.60-21-3Z-01 SIZE: A4 DRW NO.:	
CHKD.	LYX		
PDWG.NO:	0436-1	DR.	SGF
		FINISH: SEE NOTES	MAT'L.: SEE NOTES
		SCALE: N/A	REV.: A0 UNIT: mm PAGE: 2/2