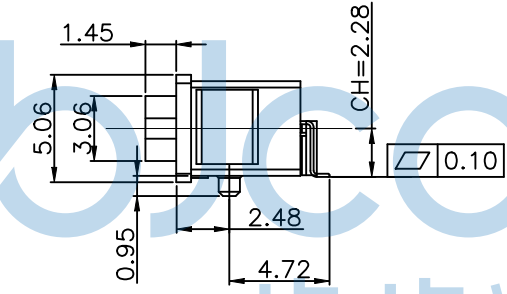
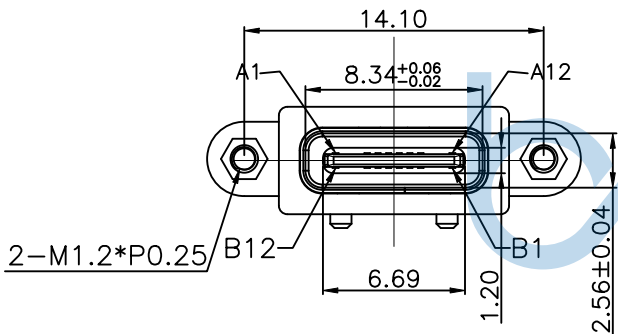


REV.	ECN NO	CONTENT	DATE	ENGINEER
A0		Initial release	/	TSP

- NOTES:
- MATERIAL: SEE "TABLE 1";
  - FINISH: SEE "TABLE 1";
  - ELECTRICAL :
    - CONTACT CURRENT RATING :
      - 5A(VBUS PIN 1.5A/PIN),
      - 5A(GND PIN 1.25A/PIN MAX),0.25A/PIN(OTHER PIN).
    - INSULATION RESISTANCE :
      - 100 MEGAOHMS MIN. AT 250VDC.
    - DIELECTRIC WITHSTANDING VOLTAGE :
      - 100VAC MIN.
    - LOW LEVEL CONTACT RESISTANCE :
      - INITIAL 40mΩ MAX.
      - AFTER 50mΩ MAX.
  - MECHANICAL CHARACTERISTICS :
    - MATING FORCE: 5~20N.;
    - UNMATING FORCE: 8~20N(INITIAL),6~20N(AFTER 10000 CYCLES);
    - DURABILITY : 10,000 MATING CYCLES.
    - OPERATING TEMPERATURE :-40°C TO +80°C



INTERFACE(FRONT VIEW)

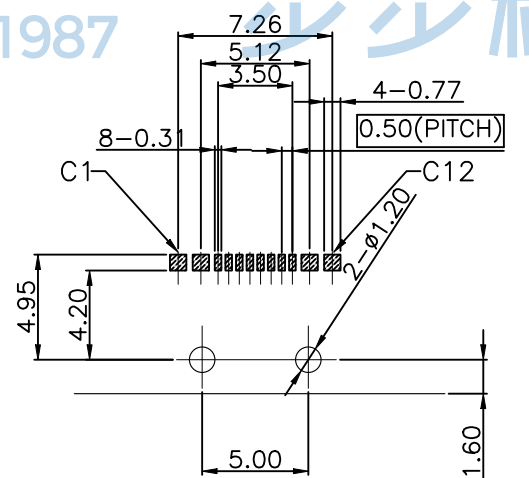
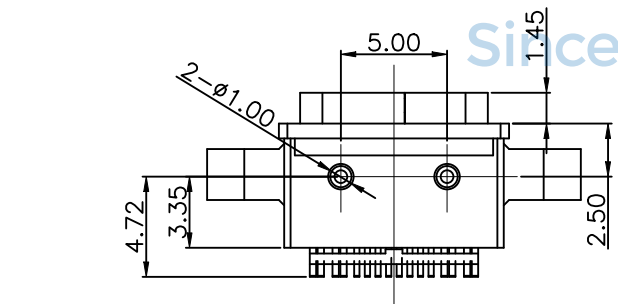
A1	A2	A3	A4	A5	A6	A7	A8	A9	A10	A11	A12
GND			VBUS	CC1	DP1	DN1	SBU1	VBUS			GND
B12	B11	B10	B9	B8	B7	B6	B5	B4	B3	B2	B1
			VBUS	SBU2	DN2	DP2	CC2	VBUS			GND

PIN ASSIGNMENT

PIN NO.	A1&B12	A4&B9	B8	A5	B7	A6	A7	B6	A8	B5	A9&B4	A12&B1
SINGAL NAME	GND	VBUS	SBU2	CC1	DN2	DP1	DN1	DP2	SBU1	CC2	VBUS	GND
PCB PAD NO.	C1	C2	C3	C4	C5	C6	C7	C8	C9	C10	C11	C12

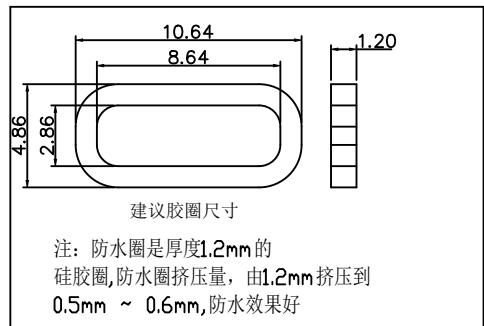
TABLE 1:

NO.	PART NAME	QTY	MATERIAL	DESCRIPTION	REMARK
⑥	Shell-2	1	Stainless steel	NI PLATING;	T=0.20mm
⑤	Shell-1	1	Stainless steel	NI PLATING;	T=0.25mm
④	MID PLATE	1	Stainless steel		T=0.15mm
③	Terminal-B	8	铜镍硅合金	Au:3u" PLATING;	T=0.15mm
②	Terminal-A	8		Au:3u" PLATING;	T=0.15mm
①	Housing	1	HIGH TEMP	Black	



RECOMMENDED PCB LAYOUT(TOP VIEW)

THICKNESS T=1.0mm  
DEFAULT TOLERANCE+/-0.05



THIS DOCUMENT IS THE SOLE PROPERTY OF **BBJconn Technology Co.,Ltd.** Corporation AND SHOULD NOT BE USED IN WHOLE OR IN PART WITHOUT PRIOR WRITTEN PERMISSION.

PDWG:NO: 0388-1

DR. TSP

APPD. JM\_Zheng

CHKD. LYX

FINISH: SEE NOTES

SCALE: N/A

REV.: A0

UNIT: mm

PAGE: 1/2

深圳市步步精科技有限公司

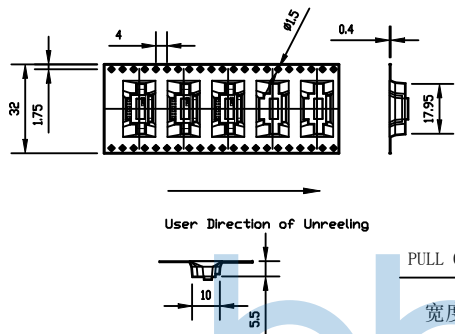
NAME:TYPE-C 16P 防水母座 锁板式 带螺母 带柱 端子SMT L=7.30 CH=2.28 IPX8 编带

PJ. NO.: 126-221-160001-S5G

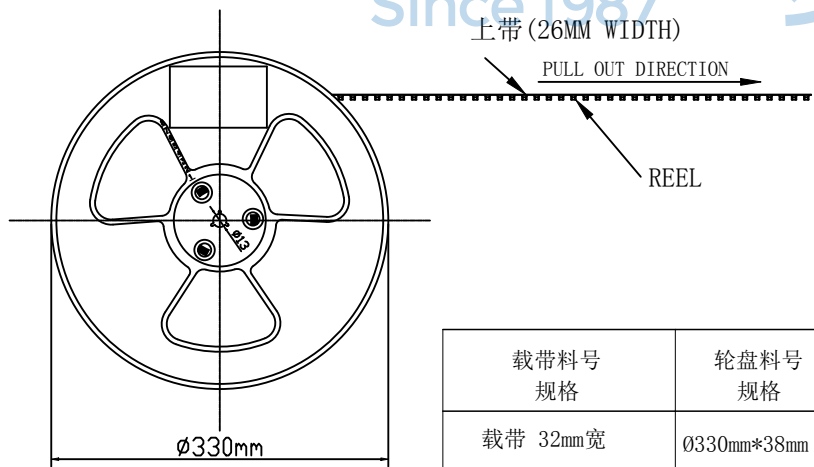
SIZE: A4 DRW NO.:

MAT'L.: SEE NOTES

- 一.
- 1) 将成品一一放入REEL包装盘内, 依同一方向放入.
  - 2) 包装时, 如图所示.
  - 3) 一个REEL包装盘放置 700 个成品.

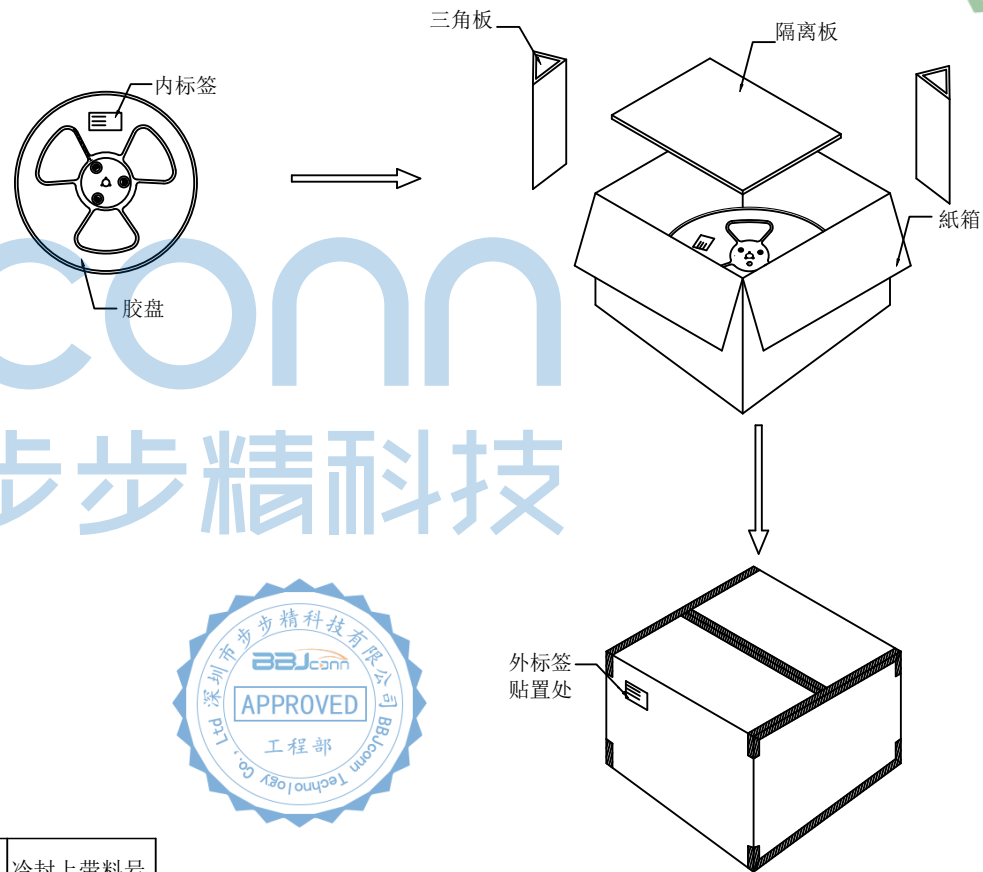


- 二.
- 1) 装盘前先把前面空16PCS, 然后再开始装盘, 尾端也需空出16PCS.
  - 2) 装满成品的REEL包装盘如下图所示.



载带料号规格	轮盘料号规格	冷封上带料号规格
载带 32mm宽	$\varnothing 330\text{mm} \times 38\text{mm}$	26mm width

- 三.
- 1) 每盘产品贴一张内标签.
  - 2) 纸箱上下各放一块隔离板, 将每盘产品依次放入箱内, 每箱放8盘产品 (5600PCS), 四周用三角板固定. 最后用透明胶纸将纸箱四周封实, 箱外贴上外标签.



THIS DOCUMENT IS THE SOLE PROPERTY OF BBJconn Technology Co., Ltd. Corporation AND SHOULD NOT BE USED IN WHOLE OR IN PART WITHOUT PRIOR WRITTEN PERMISSION.		<b>深圳市步步精科技有限公司</b> 工程管理部	
.X: $\pm 0.38$ .XX: $\pm 0.25$ .XXX: $\pm 0.13$ .X': $\pm 3'$ .X'': $\pm 2'$ .X'X': $\pm 1'$		NAME: TYPE-C 16P 防水母座 锁板式 带螺母 带柱 端子SMT L=7.30 CH=2.28 IPX8 编带	
APPD.	JM_Zheng	PJ. NO.: 126-221-160001-S5G SIZE: A4   DRW NO.:	FINISH: SEE NOTES    MAT'L.: SEE NOTES
CHKD.	LYX		
DR.	TSP	SCALE: N/A	REV.: A0    UNIT: mm    PAGE: 2/2