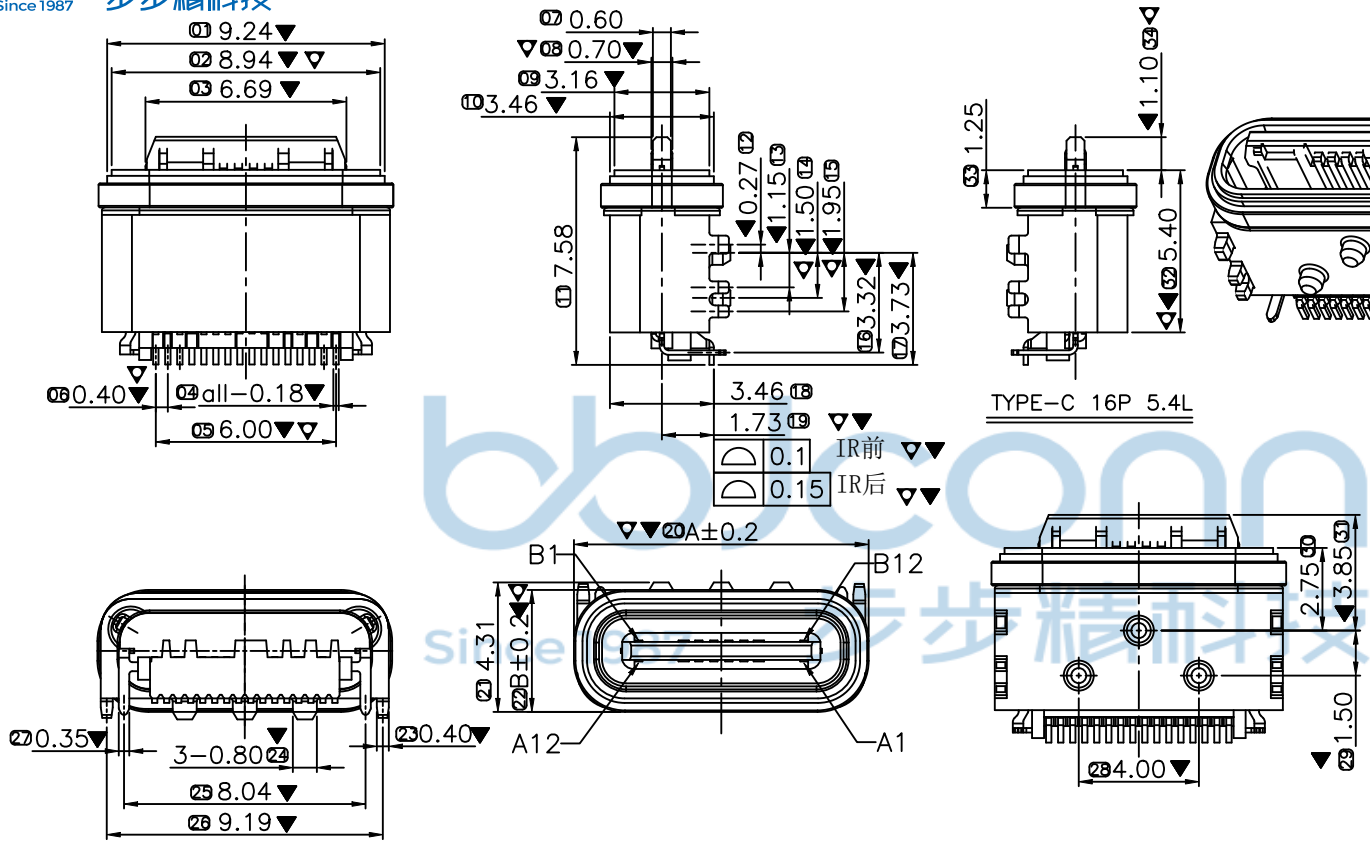


REV.	ECN NO	CONTENT	DATE	ENGINEER
A0		Initial release		LYX
A1	EN2308021	增加铆合扣点, 防止胶芯后退	2023 08/31	LYX
A2	EN2312006	Nylon改为LCP	2023 12/13	LYX



- NOTES:
- ELECTRICAL:
 - CONTACT CURRENT RATING 5.0A FOR VBUS AND GND(PINS A4 A9 B4 B9)
 - INSULATION RESISTANCE: 100 MEGAOHMS MIN. AT 250VDC.
 - DIELECTRIC WITHSTANDING VOLTAGE: 100VAC MIN.
 - LOW CONTACT RESISTANCE: INITIAL 40m MAX. AFTER 50m MAX.
 - MECHANICAL CHARACTERISTICS:
 - INSERTION FORCE: 5N~20N.
 - EXTRACTION FORCE: 8N~20N FORM 1 TO 1000CYCLES. 6~20N FORM 1001 TO 10000CYCLES.
 - DURABILITY: 10,000 MATING CYCLES
 - OPERATING TEMPERATURE: -55°C TO +85°C
 - COPLANARITY: 0.08MAX.
 - INSPECTION SYMBOL: IMPORTANCE INSPECTION.
 - Waterproof Level: IPX7
6. 带“▼”符号为重点尺寸, ▼ 巡检尺寸标记.
7. 带序号“XX”的尺寸为FAI尺寸.
8. 盐雾24小时.



TABLE:

ITEM	PART NAME	QTY	MATERIAL	REMARK
1	SHELL	1PCS	STAINLESS	NICKEL PLATED 50u" MIN. OVER ALL
2	INSERT HOUSING	1PCS	LCP	UL94V-0
3	Mid-PLATE	1PCS	STAINLESS	NI PLATED 50u" MIN. OVER ALL
4	TOP CONTACT	1SET	COPPER ALLOY	GLOD FLASH PLATE (one side brushed with gold)
5	BOTTOM CONTACT	1SET	COPPER ALLOY	
6	RUBBER RING	1PCS	SILICA GEL	BLACK

THIS DOCUMENT IS THE SOLE PROPERTY OF BBJconn Technology Co., Ltd. Corporation AND SHOULD NOT BE USED IN WHOLE OR IN PART WITHOUT PRIOR WRITTEN PERMISSION.

PDWG.No: 9999-9

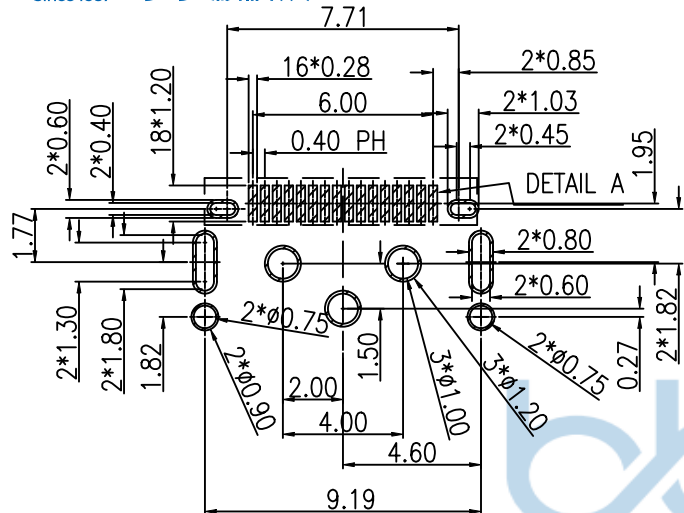
APPD. JM_Zheng 23/08/31
CHKD. TSP 23/08/31
DR. LYX 23/08/31

NAME: TYPE-C 16P 母座 L=6.5 板上型 半框 (WP 8) CH1.73 防水圈0.6mm厚未点胶 粉末冶金壳 方形防水圈

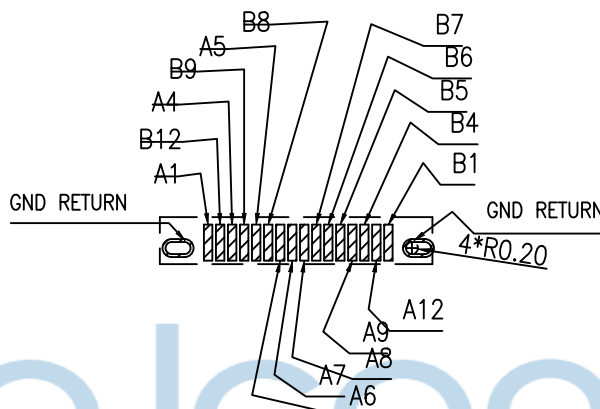
PJ. NO.: UC.01.51-1N-0006
SIZE: A4 DRW NO.: AC23-0049
FINISH: SEE NOTES MAT'L.: SEE NOTES
SCALE: N/A REV.: A2 UNIT: mm PAGE: 1/3

序号	料号	A	B	胶圈	备注
1	UC.01.51-1N-0007	10.11	4.36	0.6mm	防水圈点胶, 粉末冶金壳
2	UC.01.51-1N-0006	10.11	4.36	0.6mm	防水圈未点胶, 粉末冶金壳

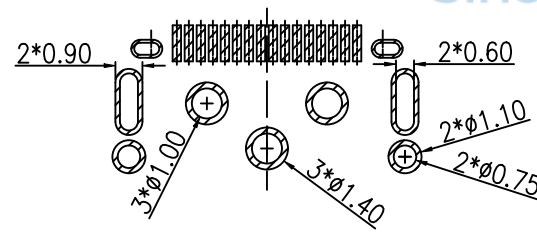
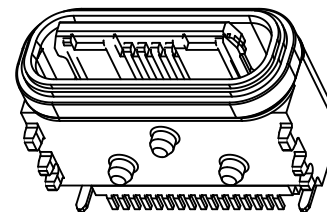
REV.	ECN NO	CONTENT	DATE	ENGINEER
A0		Initial release		LYX
A1	EN2308021	增加铆合扣点, 防止胶芯后退	2023 08/31	LYX
A2	EN2312006	Nylon改为LCP	2023 12/13	LYX



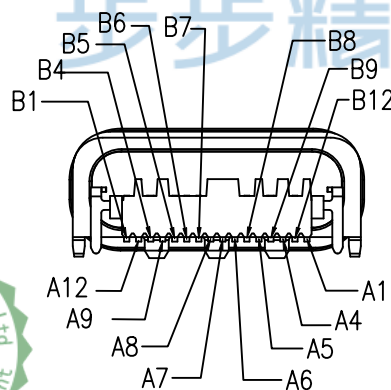
RECOMMENDED PCB LAYOUT
GENERAL TOLERANCE ±0.05



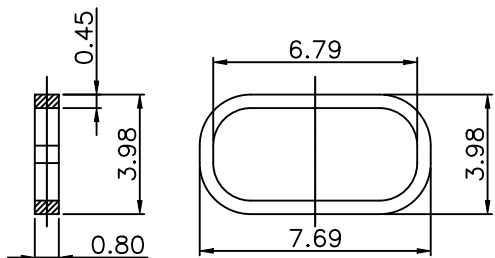
DETAIL A
SCALE 1:1



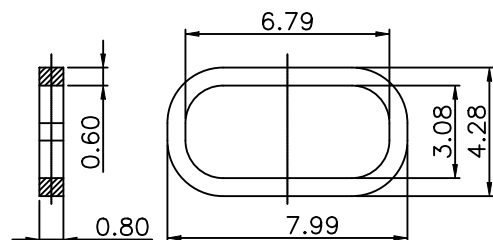
RECOMMENDED STENCIL LAYOUT
TOLERANCE±0.05



PIN	SIGNAL NAME	PIN	SIGNAL NAME
A1	GND	B12	GND
A2		B11	
A3		B10	
A4	VBUS	B9	VBUS
A5	CC1	B8	SBU2
A6	Dp1	B7	Dn2
A7	Dn1	B6	Dp2
A8	SBU1	B5	CC2
A9	VBUS	B4	VBUS
A10		B3	
A11		B2	
A12	GND	B1	GND



0.45mm防水圈

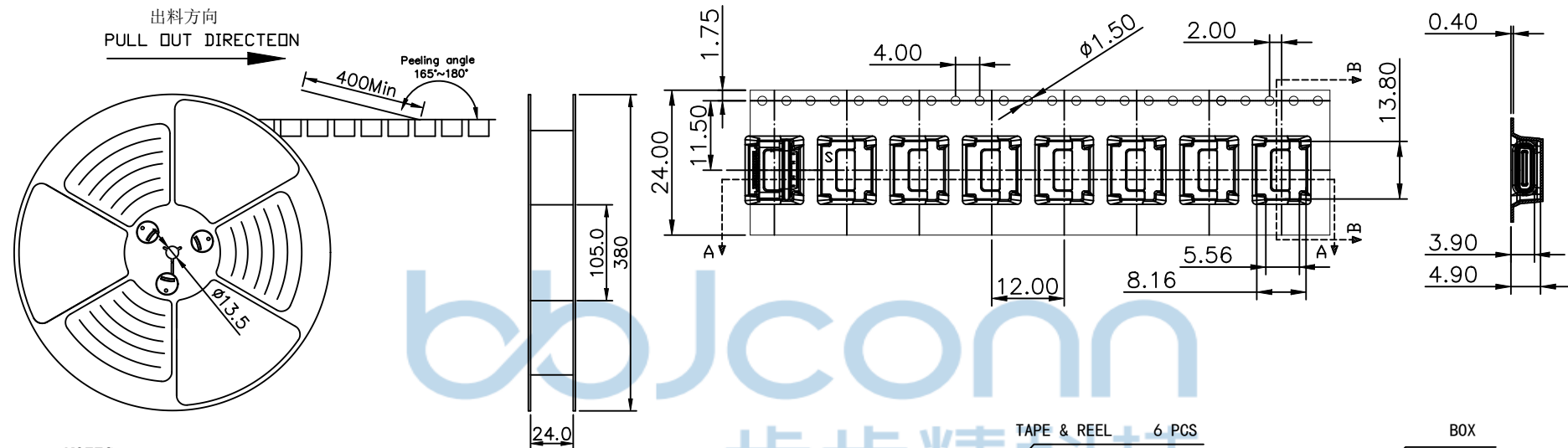


0.6mm防水圈

THIS DOCUMENT IS THE SOLE PROPERTY OF BBJconn Technology Co., Ltd. CORPORATION AND SHOULD NOT BE USED IN WHOLE OR IN PART WITHOUT PRIOR WRITTEN PERMISSION.
PDWG.NO: 9999-9

深圳市步步精科技有限公司 NAME: TYPE-C 16P 母座 L=6.5 板上型 半框 (WP 8) CH1.73 防水圈0.6mm厚未点胶 粉末冶金壳 方形防水圈	
.X: ±0.38 .XX: ±0.25 .XXX: ±0.13	X': ±3" .X': ±2" .XX': ±1"
APPD. JM_Zheng 23/08'31	PJ. NO.: UC.01.51-1N-0006
CHKD. TSP 23/08'31	SIZE: A4 DRW NO.: AC23-0049
DR. LYX 23/08'31	FINISH: SEE NOTES MAT'L.: SEE NOTES
	SCALE: N/A REV.: A2 UNIT: mm PAGE: 2/3

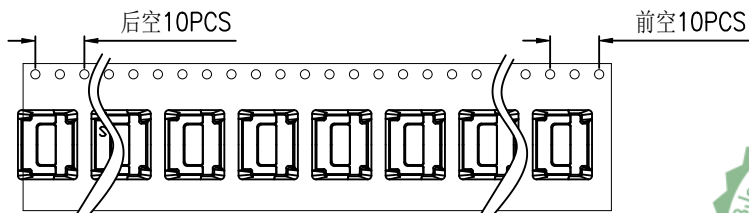
REV.	ECN NO.	CONTENT	DATE	ENGINEER
A0		Initial release		LYX
A1	EN2308021	增加铆合扣点, 防止胶芯后退	2023 08/31	LYX
A2	EN2312006	Nylon改为LCP	2023 12/13	LYX



NOTES

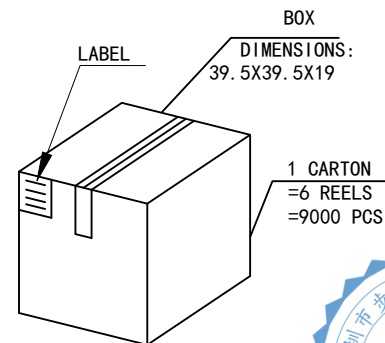
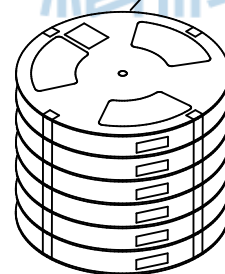
- 帶子引導長度
LEAD TAPE LENGTH
出料方向
PULL OUT DIRECTEON

出料方向
PULL OUT DIRECTEON



- 上帶 剝力力為: 0.1~1.3N(10.2gf~130gf)
PEELING OFF FORCE OF TOP TAPE: 0.1~1.3N(10.2gf~130gf)
出貨運輸過程中一定注意:
THIS REQUIREMENT SHOULD BE APPLIED AT SHIPMENT:
卷帶在運輸過程中不能散開
PEELING OFF SHOULD NOT BE ALLOWED DURING TRANSPORTATION

TAPE & REEL 6 PCS
1 REEL = 1500 PCS



THIS DOCUMENT IS THE SOLE PROPERTY OF BBJconn Technology Co., Ltd. Corporation AND SHOULD NOT BE USED IN WHOLE OR IN PART WITHOUT PRIOR WRITTEN PERMISSION.		深圳市步步精科技有限公司	
.X: ±0.38 .X': ±3" .XX: ±0.25 .X'': ±2" .XXX: ±0.13 .X''': ±1"		NAME: TYPE-C 16P 母座 L=6.5 板上型 半框 (WP 8) CH1.73 防水圈0.6mm厚未点胶 粉末冶金壳 方形防水圈	
APPD.	JM_Zheng 23/08'31	PJ. NO.: UC.01.51-1N-0006 SIZE: A4 DRW NO.: AC23-0049	FINISH: SEE NOTES MAT'L.: SEE NOTES
CHKD.	TSP 23/08'31		
PDWG. NO:	9999-9	DR.	LYX 23/08'31
		SCALE: N/A	REV.: A2 UNIT: mm PAGE: 3/3