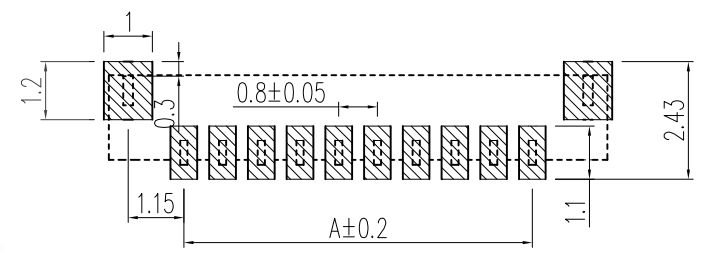
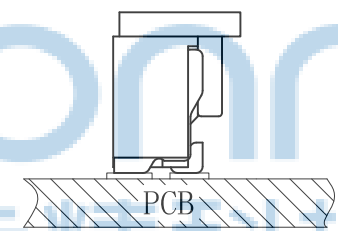
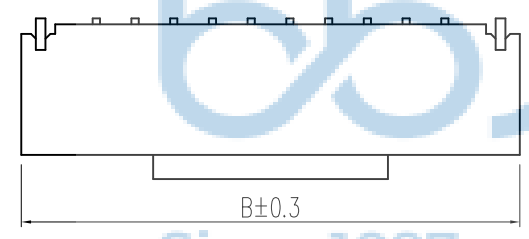
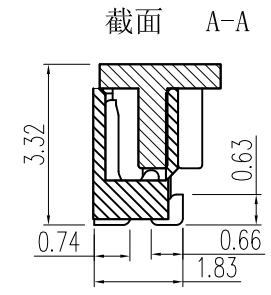
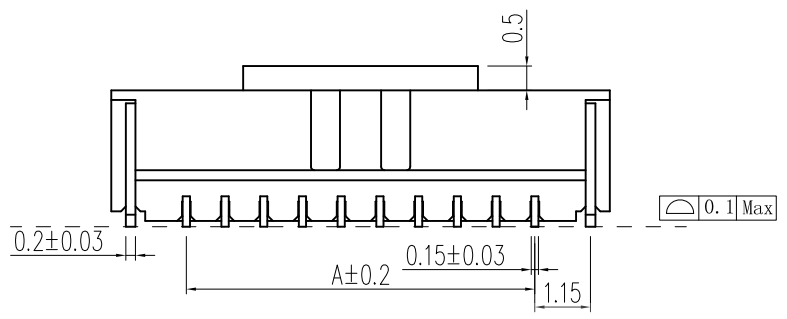
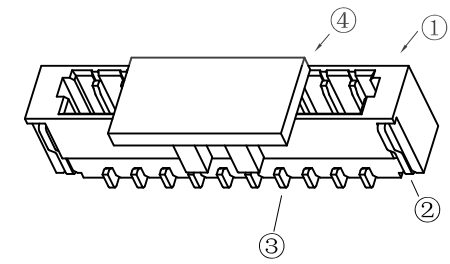
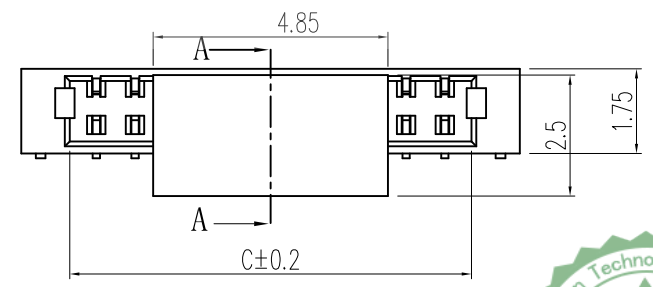


REV.	ECN NO.	CONTENT	DATE	ENGINEER
A0				

1. 技术参数:
- 1.1 额定电流: 0.5A AC/DC
 - 1.2 额定电压: 50V
 - 1.3 耐电压: 500V ACminute
 - 1.4 接触电阻: 20mΩ MAX
 - 1.5 绝缘电阻: 100MΩ MIN
2. 工作温度: -25℃~+85℃



印制线路板



Circuits	Dimensions (mm)			Circuits	Dimensions (mm)		
	A	B	C		A	B	C
0.8LT-2P	0.8	3.90	1.90	0.8LT-12P	8.80	11.90	9.90
0.8LT-3P	1.6	4.70	2.70	0.8LT-13P	9.60	12.70	10.70
0.8LT-4P	2.4	5.50	3.50	0.8LT-14P	10.40	13.50	11.50
0.8LT-5P	3.2	6.30	4.30	0.8LT-15P	11.20	14.30	12.30
0.8LT-6P	4.0	7.10	5.10	0.8LT-16P	12.00	15.10	13.10
0.8LT-7P	4.8	7.90	5.90				
0.8LT-8P	5.6	8.70	6.70				
0.8LT-9P	6.4	9.50	7.50				
0.8LT-10P	7.2	10.30	8.30				
0.8LT-11P	8.0	11.10	9.10				



NO	物料名称	规格型号	数量(PCS)	材质	镀涂	物料编码
①	基座	0.8	1	LCPE130i	本色	
②	焊片	0.8	2	磷铜	锡	
③	插针	0.8	2~20	磷铜	锡	
④	盖板	0.8	1	LCPE130i	本色	

THIS DOCUMENT IS THE SOLE PROPERTY OF BBJconn Technology Co., Ltd. CORPORATION AND SHOULD NOT BE USED IN WHOLE OR IN PART WITHOUT PRIOR WRITTEN PERMISSION.

PDWG.NO: 0013-1

APPD. JM_Zheng

CHKD. LYX

DR. SGF

深圳市步步精科技有限公司

NAME: 针座 0.8-8P 立贴 加盖 米黄色

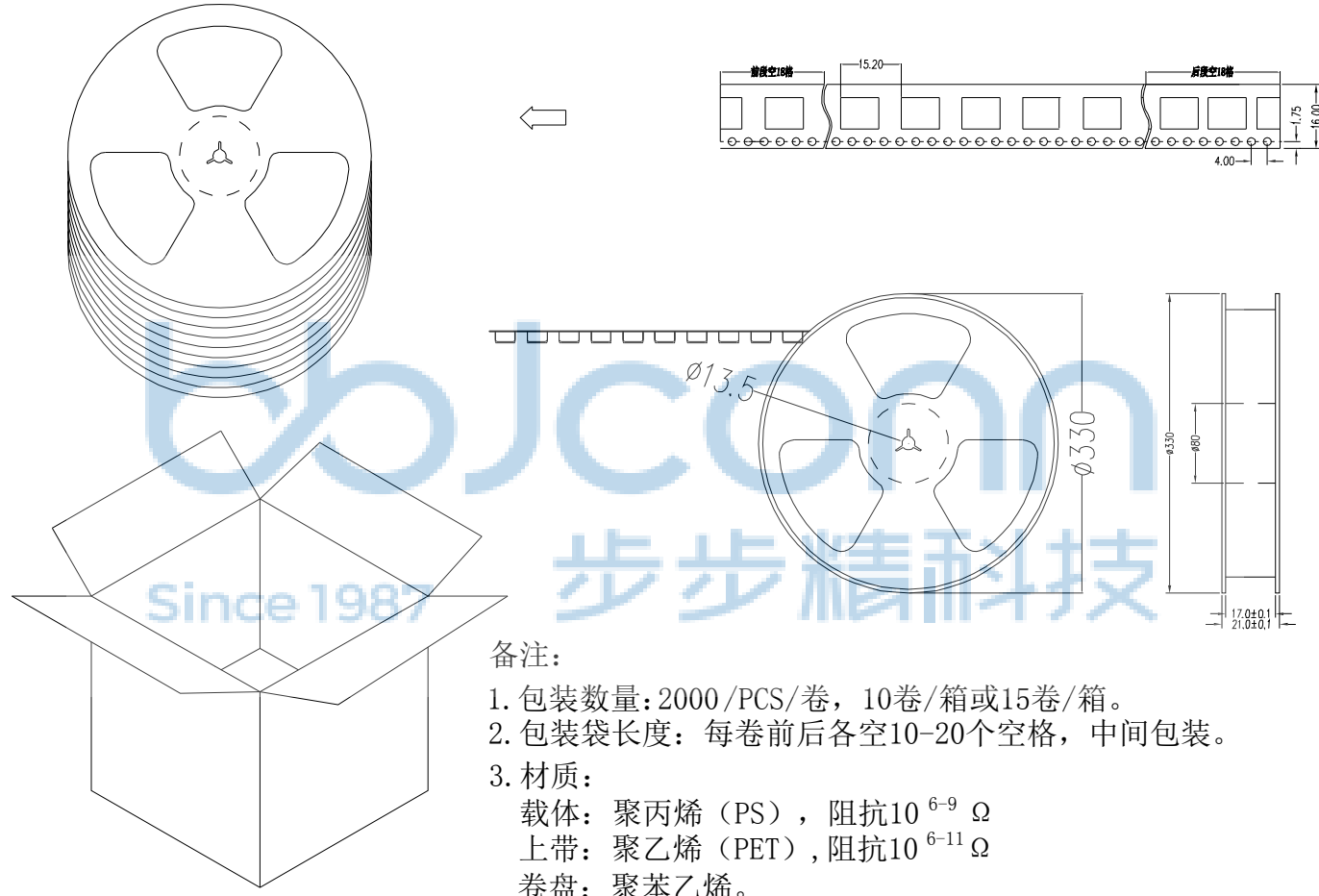
PJ. NO.: WT.17.61-85-H006

SIZE: A4 DRW NO.:

FINISH: SEE NOTES MAT'L.: SEE NOTES

SCALE: N/A REV.: A0 UNIT: mm PAGE: 1/2

REV.	ECN NO	CONTENT	DATE	ENGINEER
A0				



备注：
 1. 包装数量：2000/PCS/卷，10卷/箱或15卷/箱。
 2. 包装袋长度：每卷前后各空10-20个空格，中间包装。
 3. 材质：
 载体：聚丙烯（PS），阻抗 $10^{6-9} \Omega$
 上带：聚乙烯（PET），阻抗 $10^{6-11} \Omega$
 卷盘：聚苯乙烯。
 纸箱规格：345*345*23MM
 纸箱规格：345*345*35MM

THIS DOCUMENT IS THE SOLE PROPERTY OF BBJconn Technology Co.,Ltd. Corporation AND SHOULD NOT BE USED IN WHOLE OR IN PART WITHOUT PRIOR WRITTEN PERMISSION.		深圳市步步精科技有限公司 .X: ± 0.38 .X': $\pm 3'$.XX: ± 0.25 .X': $\pm 2'$.XXX: ± 0.13 .XX': $\pm 1'$		NAME: 针座 0.8-8P 立贴 加盖 米黄色	
APPD.	JM_Zheng	PJ. NO.: WT.17.61-85-H006 SIZE: A4 DRW NO.:		FINISH: SEE NOTES MAT'L.: SEE NOTES	
CHKD.	LYX	SCALE: N/A		REV.: A0	UNIT: mm
PDWG.NO:	0013-1	DR.	SGF	PAGE: 2/2	