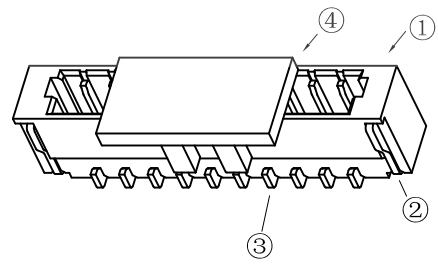
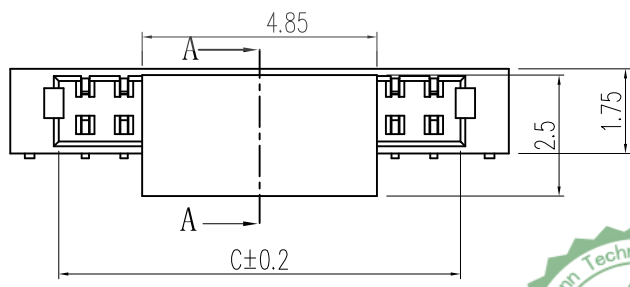
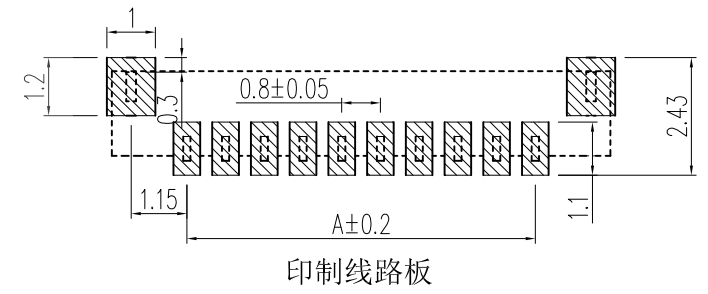
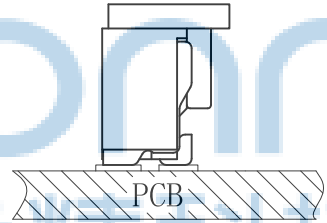
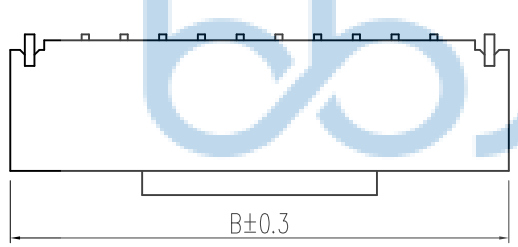
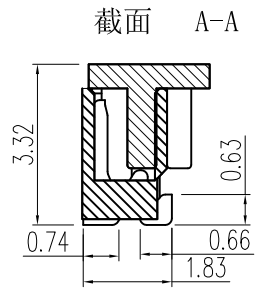
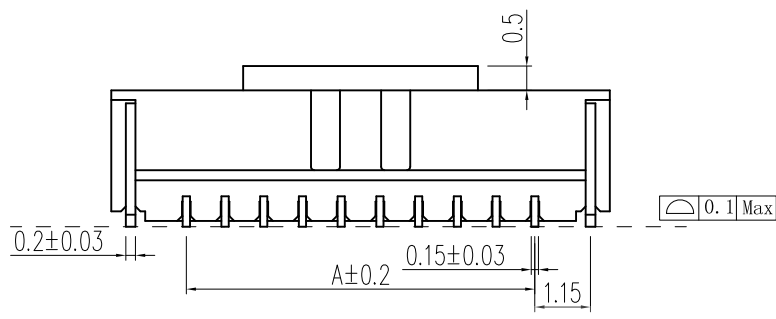


REV.	ECN NO.	CONTENT	DATE	ENGINEER
A0				

1. 技术参数:
- 1.1 额定电流: 0.5A AC/DC
  - 1.2 额定电压: 50V
  - 1.3 耐电压: 500V ACminute
  - 1.4 接触电阻: 20mΩ MAX
  - 1.5 绝缘电阻: 100MΩ MIN
  - 2. 工作温度: -25℃~+85℃



Circuits	Dimensions (mm)			Circuits	Dimensions (mm)		
	A	B	C		A	B	C
0.8LT-2P	0.8	3.90	1.90	0.8LT-12P	8.80	11.90	9.90
0.8LT-3P	1.6	4.70	2.70	0.8LT-13P	9.60	12.70	10.70
0.8LT-4P	2.4	5.50	3.50	0.8LT-14P	10.40	13.50	11.50
0.8LT-5P	3.2	6.30	4.30	0.8LT-15P	11.20	14.30	12.30
0.8LT-6P	4.0	7.10	5.10	0.8LT-16P	12.00	15.10	13.10
0.8LT-7P	4.8	7.90	5.90				
0.8LT-8P	5.6	8.70	6.70				
0.8LT-9P	6.4	9.50	7.50				
0.8LT-10P	7.2	10.30	8.30				
0.8LT-11P	8.0	11.10	9.10				



NO	物料名称	规格型号	数量 (PCS)	材质	镀涂	物料编码
①	基座	0.8	1	LCPE130i	本色	
②	焊片	0.8	2	磷铜	锡	
③	插针	0.8	2~20	磷铜	锡	
④	盖板	0.8	1	LCPE130i	本色	

THIS DOCUMENT IS THE SOLE PROPERTY OF BBJconn Technology Co., Ltd. CORPORATION AND SHOULD NOT BE USED IN WHOLE OR IN PART WITHOUT PRIOR WRITTEN PERMISSION.

PDWG.NO: 0013-1

APPD. JM\_Zheng

CHKD. LYX

DR. SGF

NAME: 针座 0.8-6P 立贴 加盖 米黄色

PJ. NO.: WT.17.61-85-H003

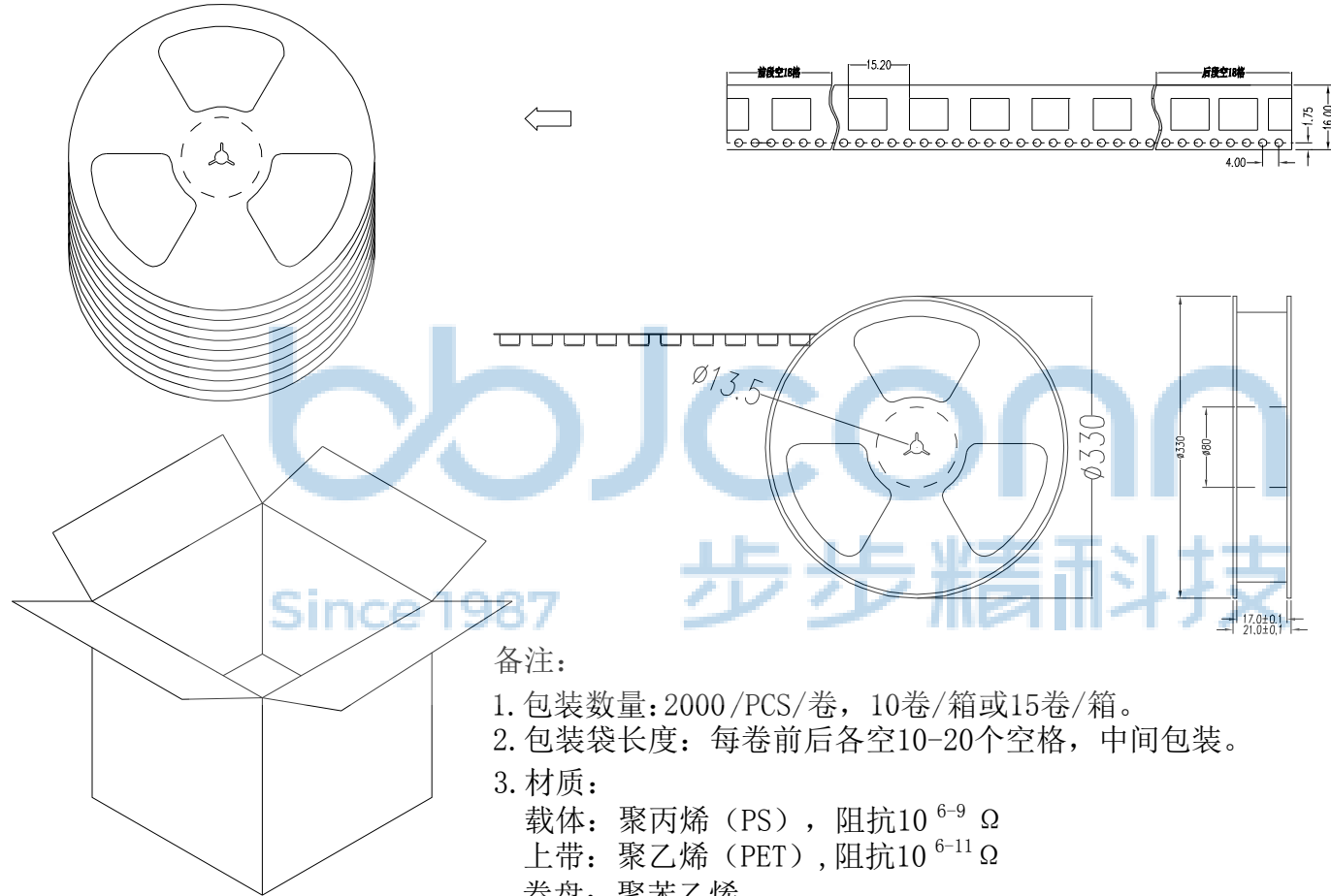
SIZE: A4 | DRW NO.:

FINISH: SEE NOTES | MAT'L.: SEE NOTES

SCALE: N/A | REV.: A0 | UNIT: mm | PAGE: 1/2

深圳市步步精科技有限公司

REV.	ECN NO	CONTENT	DATE	ENGINEER
A0				



备注:

1. 包装数量: 2000 / PCS / 卷, 10卷 / 箱或15卷 / 箱。
2. 包装袋长度: 每卷前后各空10-20个空格, 中间包装。
3. 材质:  
载体: 聚丙烯 (PS), 阻抗 $10^{6-9} \Omega$   
上带: 聚乙烯 (PET), 阻抗 $10^{6-11} \Omega$   
卷盘: 聚苯乙烯。

纸箱规格: 345\*345\*23MM  
纸箱规格: 345\*345\*35MM



THIS DOCUMENT IS THE SOLE PROPERTY OF BBJconn Technology Co.,Ltd. Corporation AND SHOULD NOT BE USED IN WHOLE OR IN PART WITHOUT PRIOR WRITTEN PERMISSION.		PDWG.NO: 0013-1		DR. SGF		深圳市步步精科技有限公司 .X: ±0.38 .X': ±3' .XX: ±0.25 .X': ±2' .XXX: ±0.13 .XX': ±1'		NAME: 针座 0.8-6P 立贴 加盖 米黄色 PJ. NO.: WT.17.61-85-H003 SIZE: A4 DRW NO.: FINISH: SEE NOTES MAT'L.: SEE NOTES SCALE: N/A REV.: A0 UNIT: mm PAGE: 2/2	
--	--	-----------------	--	---------	--	--	--	--	--