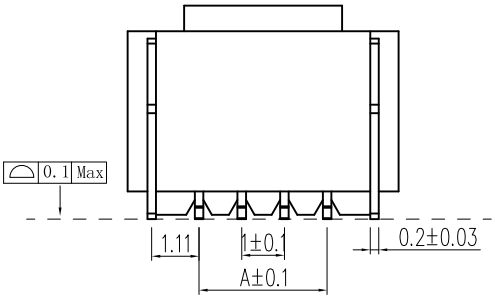
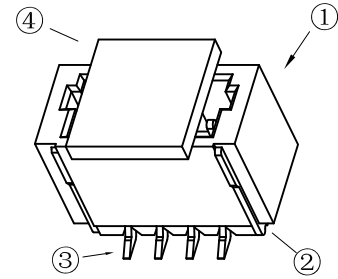
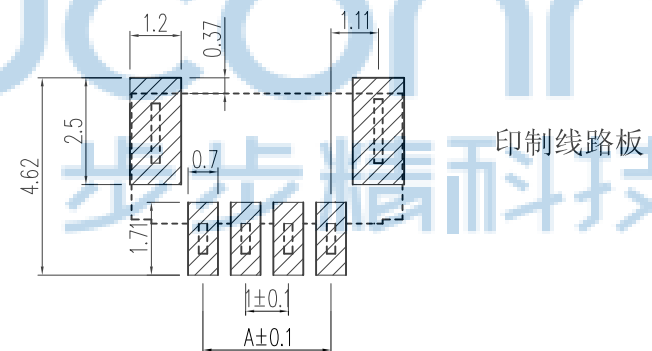
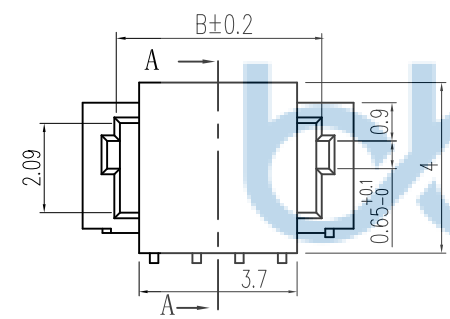
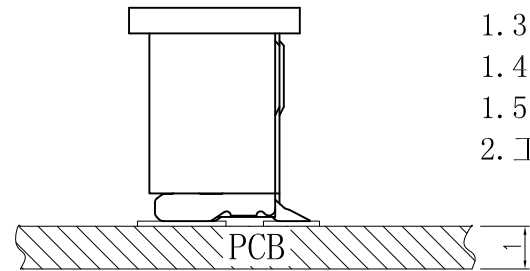
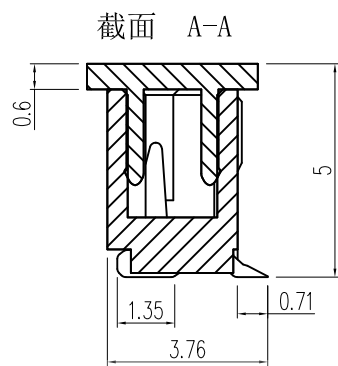
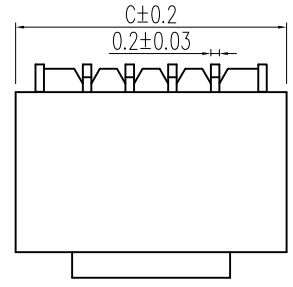


| REV. | ECN NO. | CONTENT | DATE | ENGINEER |
|------|---------|---------|------|----------|
| A0   |         |         |      |          |

1. 技术参数:
- 1.1 额定电流: 0.5A AC/DC
  - 1.2 额定电压: 50V
  - 1.3 耐电压: 500V ACminute
  - 1.4 接触电阻: 20mΩ MAX
  - 1.5 绝缘电阻: 100MΩ MIN
  - 2. 工作温度: -25℃~+85℃



| Circuits   | Dimensions (mm) |      |       | Circuits   | Dimensions (mm) |      |       |
|------------|-----------------|------|-------|------------|-----------------|------|-------|
|            | A               | B    | C     |            | A               | B    | C     |
| 1. 0LT-2P  | 1.0             | 2.6  | 4.30  | 1. 0LT-12P | 11.0            | 12.6 | 14.30 |
| 1. 0LT-3P  | 2.0             | 3.6  | 5.30  | 1. 0LT-13P | 12.0            | 13.6 | 15.30 |
| 1. 0LT-4P  | 3.0             | 4.6  | 6.30  | 1. 0LT-14P | 13.0            | 14.6 | 16.30 |
| 1. 0LT-5P  | 4.0             | 5.6  | 7.30  | 1. 0LT-15P | 14.0            | 15.6 | 17.30 |
| 1. 0LT-6P  | 5.0             | 6.6  | 8.30  | 1. 0LT-16P | 15.0            | 16.6 | 18.30 |
| 1. 0LT-7P  | 6.0             | 7.6  | 9.30  |            |                 |      |       |
| 1. 0LT-8P  | 7.0             | 8.6  | 10.30 |            |                 |      |       |
| 1. 0LT-9P  | 8.0             | 9.6  | 11.30 |            |                 |      |       |
| 1. 0LT-10P | 9.0             | 10.6 | 12.30 |            |                 |      |       |
| 1. 0LT-11P | 10.0            | 11.6 | 13.30 |            |                 |      |       |

| NO | 物料名称 | 规格型号 | 数量(PCS) | 材质       | 镀涂 |
|----|------|------|---------|----------|----|
| ①  | 基座   | 1.0  | 1       | LCPE130i | 本色 |
| ②  | 焊片   | 1.0  | 2       | 磷铜       | 锡  |
| ③  | 插针   | 1.0  | 2~20    | 磷铜       | 锡  |
| ④  | 盖板   | 1.0  | 1       | LCPE130i | 本色 |



THIS DOCUMENT IS THE SOLE PROPERTY OF BBJconn Technology Co.,Ltd. Corporation AND SHOULD NOT BE USED IN WHOLE OR IN PART WITHOUT PRIOR WRITTEN PERMISSION.

PDWG.NO: 0013-1

DR. SGF

APPD. JM\_Zheng

CHKD. LYX

NAME: 针座 1.0-5P 立贴 加盖 米黄色

PJ. NO.: WT.10.61-83-H001

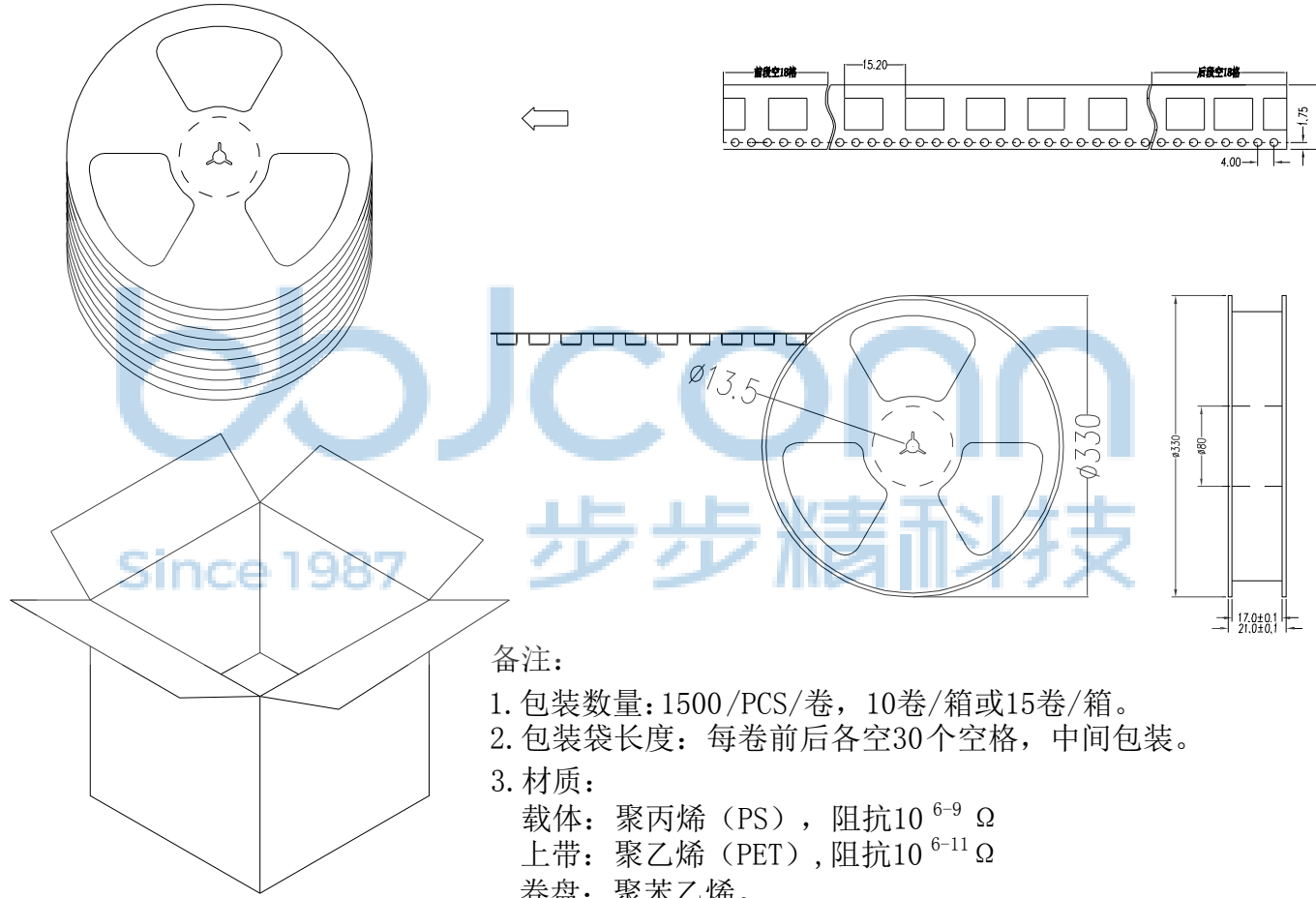
SIZE: A4 DRW NO.:

FINISH: SEE NOTES MAT'L.: SEE NOTES

SCALE: N/A REV.: A0 UNIT: mm PAGE: 1/2

深圳市步步精科技有限公司

|      |        |         |      |          |
|------|--------|---------|------|----------|
| REV. | ECN NO | CONTENT | DATE | ENGINEER |
| A0   |        |         |      |          |



备注:

1. 包装数量: 1500/PCS/卷, 10卷/箱或15卷/箱。
2. 包装袋长度: 每卷前后各空30个空格, 中间包装。
3. 材质:  
载体: 聚丙烯 (PS), 阻抗 $10^{6-9} \Omega$   
上带: 聚乙烯 (PET), 阻抗 $10^{6-11} \Omega$   
卷盘: 聚苯乙烯。

纸箱规格: 345\*345\*23MM

纸箱规格: 345\*345\*35MM

|  |  |   |  |
|--|--|---|--|
| THIS DOCUMENT IS THE SOLE PROPERTY OF BBJconn Technology Co.,Ltd. Corporation AND SHOULD NOT BE USED IN WHOLE OR IN PART WITHOUT PRIOR WRITTEN PERMISSION. |  | 深圳市步步精科技有限公司<br>NAME: 针座 1.0-5P 立贴 加盖 米黄色   |  |
| .X: ±0.38    .XX: ±0.25    .XXX: ±0.13<br>X': ±3"    X'': ±2"    XX': ±1"  |  | APPD. JM_Zheng<br>CHKD. LYX<br>DR. SGF  |  |
| PDWG.NO: 0013-1  |  | PJ. NO.: WT.10.61-83-H001<br>SIZE: A4   DRW NO.:<br>FINISH: SEE NOTES    MAT'L.: SEE NOTES<br>SCALE: N/A    REV.: A0    UNIT: mm    PAGE: 2/2 |  |