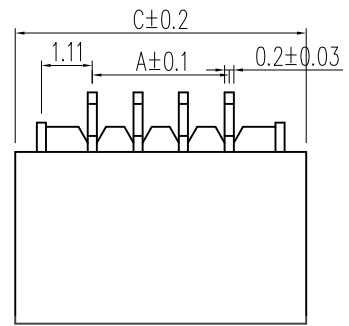
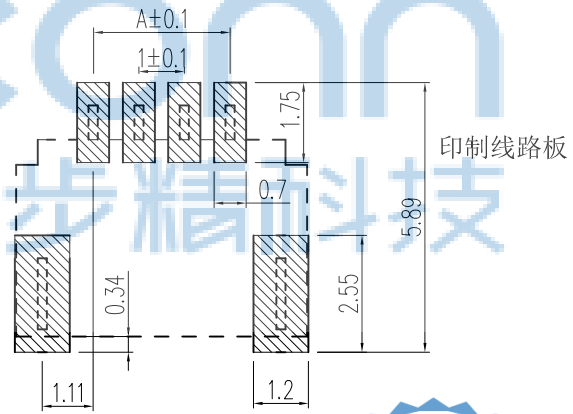
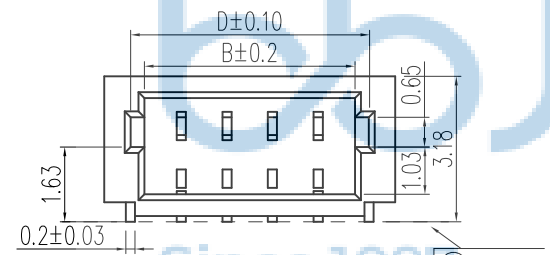
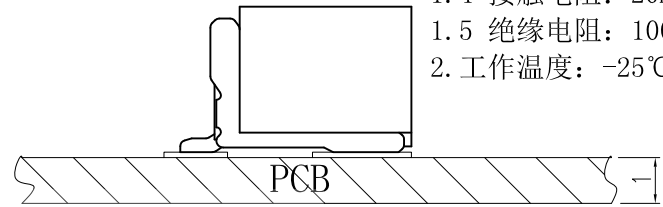
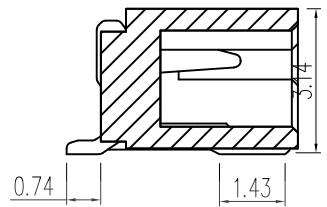


REV.	ECN NO	CONTENT	DATE	ENGINEER
A0				

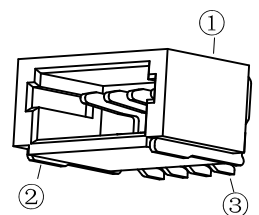
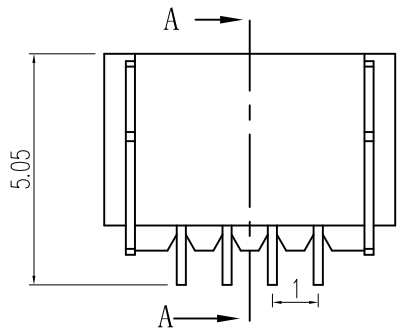
1. 技术参数:
 1.1 额定电流: 0.5A AC/DC
 1.2 额定电压: 50V
 1.3 耐电压: 500V ACminute
 1.4 接触电阻: 20mΩ MAX
 1.5 绝缘电阻: 100MΩ MIN
 2. 工作温度: -25℃~+85℃



截面 A-A



印制线路板



Circuits	Dimensions (mm)				Circuits	Dimensions (mm)			
	A	B	C	D		A	B	C	D
1. OWT-2P	1.0	2.6	4.30	3.20	1. OWT-12P	11.0	12.6	14.30	13.20
1. OWT-3P	2.0	3.6	5.30	4.20	1. OWT-13P	12.0	13.6	15.30	14.20
1. OWT-4P	3.0	4.6	6.30	5.20	1. OWT-14P	13.0	14.6	16.30	15.20
1. OWT-5P	4.0	5.6	7.30	6.20	1. OWT-15P	14.0	15.6	17.30	16.20
1. OWT-6P	5.0	6.6	8.30	7.20	1. OWT-16P	15.0	16.6	18.30	17.20
1. OWT-7P	6.0	7.6	9.30	8.20					
1. OWT-8P	7.0	8.6	10.30	9.20					
1. OWT-9P	8.0	9.6	11.30	10.20					
1. OWT-10P	9.0	10.6	12.30	11.20					
1. OWT-11P	10.0	11.6	13.30	12.20					

NO	物料名称	规格型号	数量(PCS)	材质	镀涂	物料编码
①	基座	1.0	1	LCPE130i	本色	
②	焊片	1.0	2	磷铜	锡	
③	插针	1.0	2~20	磷铜	锡	

THIS DOCUMENT IS THE SOLE PROPERTY OF BBJconn Technology Co.,Ltd. CORPORATION AND SHOULD NOT BE USED IN WHOLE OR IN PART WITHOUT PRIOR WRITTEN PERMISSION.
 PDWG.NO: 0013-1

深圳市步步精科技有限公司

NAME: 针座 1.0-14P 卧贴 米黄色

PJ. NO.: WT.10.61-14-H001

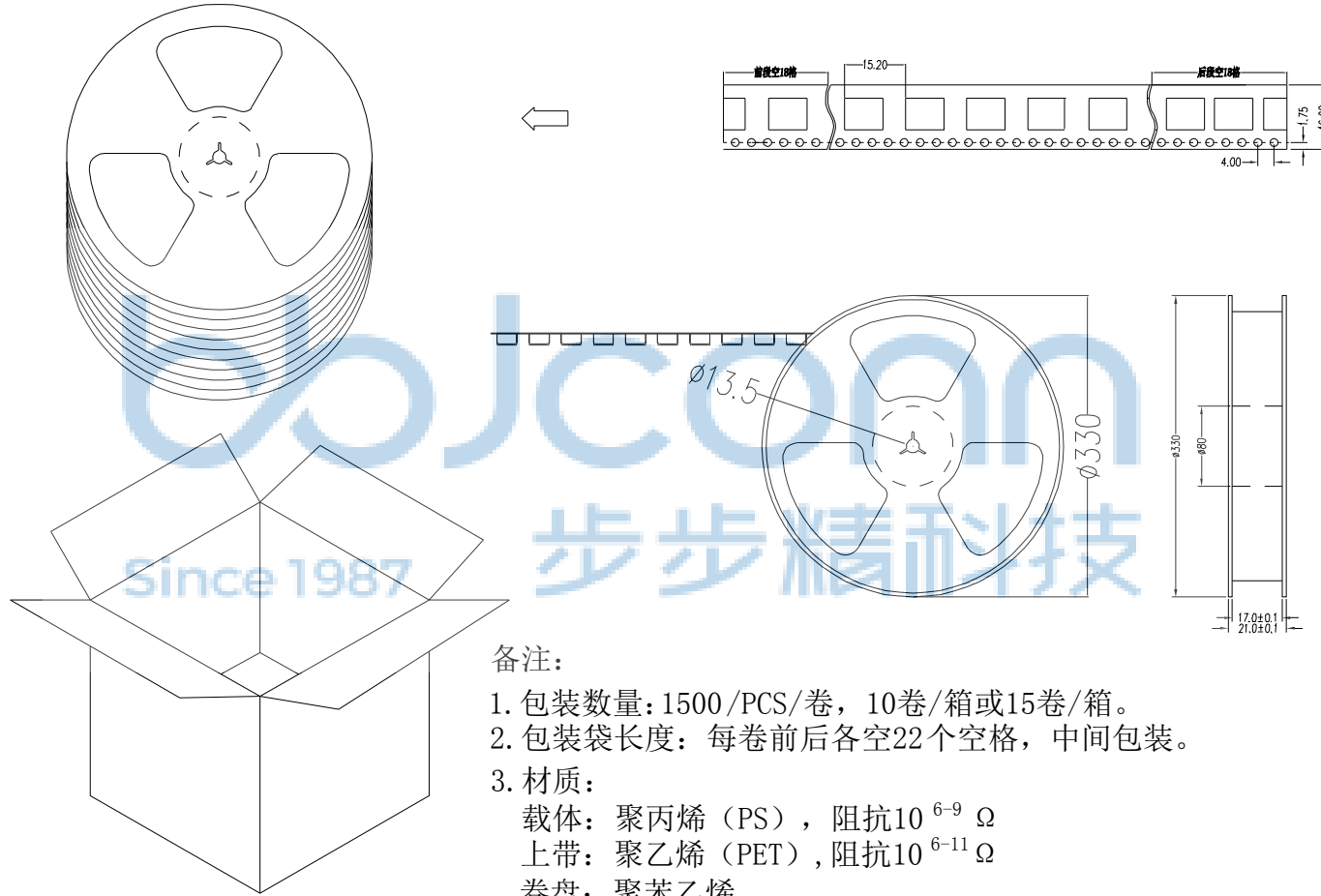
SIZE: A4 DRW NO.:

FINISH: SEE NOTES MAT'L.: SEE NOTES

SCALE: N/A REV.: A0 UNIT: mm PAGE: 1/2

APPD. JM_Zheng
 CHKD. LYX
 DR. SGF

REV.	ECN NO	CONTENT	DATE	ENGINEER
A0				



备注:

1. 包装数量: 1500/PCS/卷, 10卷/箱或15卷/箱。
2. 包装袋长度: 每卷前后各空22个空格, 中间包装。
3. 材质:
载体: 聚丙烯 (PS), 阻抗 $10^{6-9} \Omega$
上带: 聚乙烯 (PET), 阻抗 $10^{6-11} \Omega$
卷盘: 聚苯乙烯。

纸箱规格: 345*345*23MM
纸箱规格: 345*345*35MM

THIS DOCUMENT IS THE SOLE PROPERTY OF BBJconn Technology Co.,Ltd. Corporation AND SHOULD NOT BE USED IN WHOLE OR IN PART WITHOUT PRIOR WRITTEN PERMISSION.		深圳市步步精科技有限公司 .X: ± 0.38 .X': $\pm 3'$.XX: ± 0.25 .X': $\pm 2'$.XXX: ± 0.13 .XX': $\pm 1'$		NAME: 针座 1.0-14P 卧贴 米黄色	
APPD.	JM_Zheng	PJ. NO.: WT.10.61-14-H001 SIZE: A4 DRW NO.:		FINISH: SEE NOTES MAT'L.: SEE NOTES	
CHKD.	LYX	SCALE: N/A		REV.: A0	UNIT: mm
PDWG.NO:	0013-1	DR.	SGF	PAGE: 2/2	