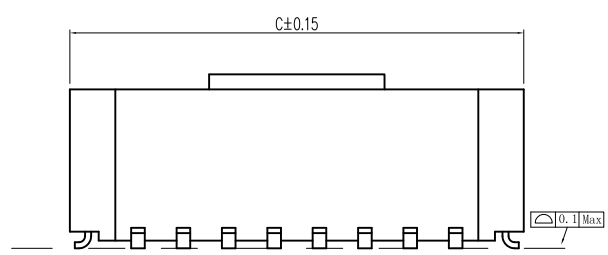
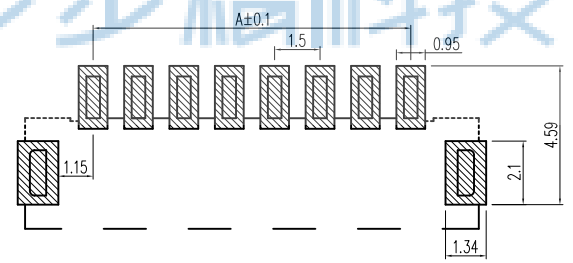
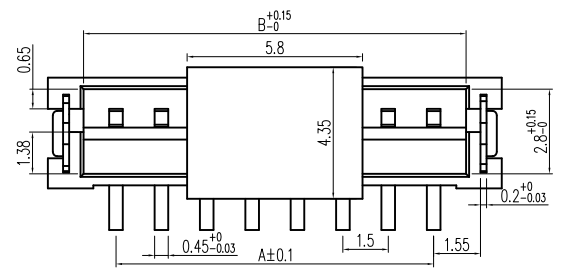
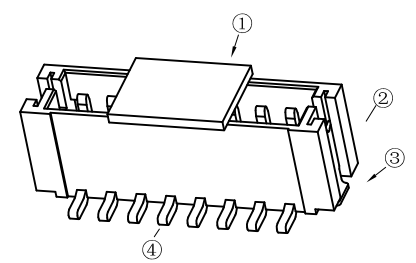
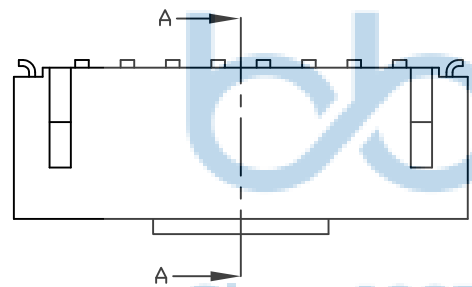
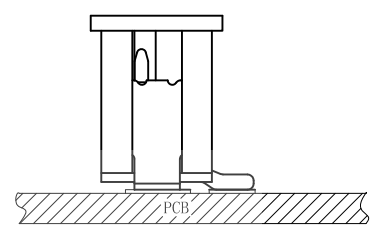
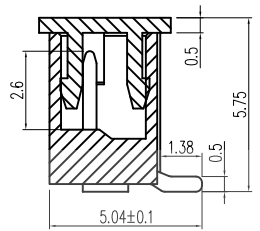


REV.	ECN NO.	CONTENT	DATE	ENGINEER
A0				

1. 技术参数:
- 1.1 额定电流: 1.0A AC/DC
 - 1.2 额定电压: 125V
 - 1.3 耐电压: 500V ACminute
 - 1.4 接触电阻: 20mΩ MAX
 - 1.5 绝缘电阻: 500MΩ MIN
 2. 工作温度: -25℃~+85℃



截面 A-A



Circuits	Dimensions (mm)			Circuits	Dimensions (mm)		
	A	B	C		A	B	C
1.5LT-2P	1.5	3.66	6.02	1.5LT-12P	16.5	18.66	21.02
1.5LT-3P	3.0	5.16	7.52	1.5LT-13P	18.0	20.16	22.52
1.5LT-4P	4.5	6.66	9.02	1.5LT-14P	19.5	21.66	24.02
1.5LT-5P	6.0	8.16	10.52	1.5LT-15P	21.0	23.16	25.52
1.5LT-6P	7.5	9.66	12.02	1.5LT-16P	22.5	24.66	27.02
1.5LT-7P	9.0	11.16	13.52				
1.5LT-8P	10.5	12.66	15.02				
1.5LT-9P	12.0	14.16	16.52				
1.5LT-10P	13.5	15.66	18.02				
1.5LT-11P	15.0	17.16	19.52				

NO	物料名称	规格型号	数量 (PCS)	材质	镀涂	物料编码
①	盖板	1.5	1	LCPE130i	本色	
②	基座	1.5	1	LCPE130i	本色	
③	焊片	1.5	2	黄铜	锡	
④	插针	1.5	2~20	黄铜	锡	

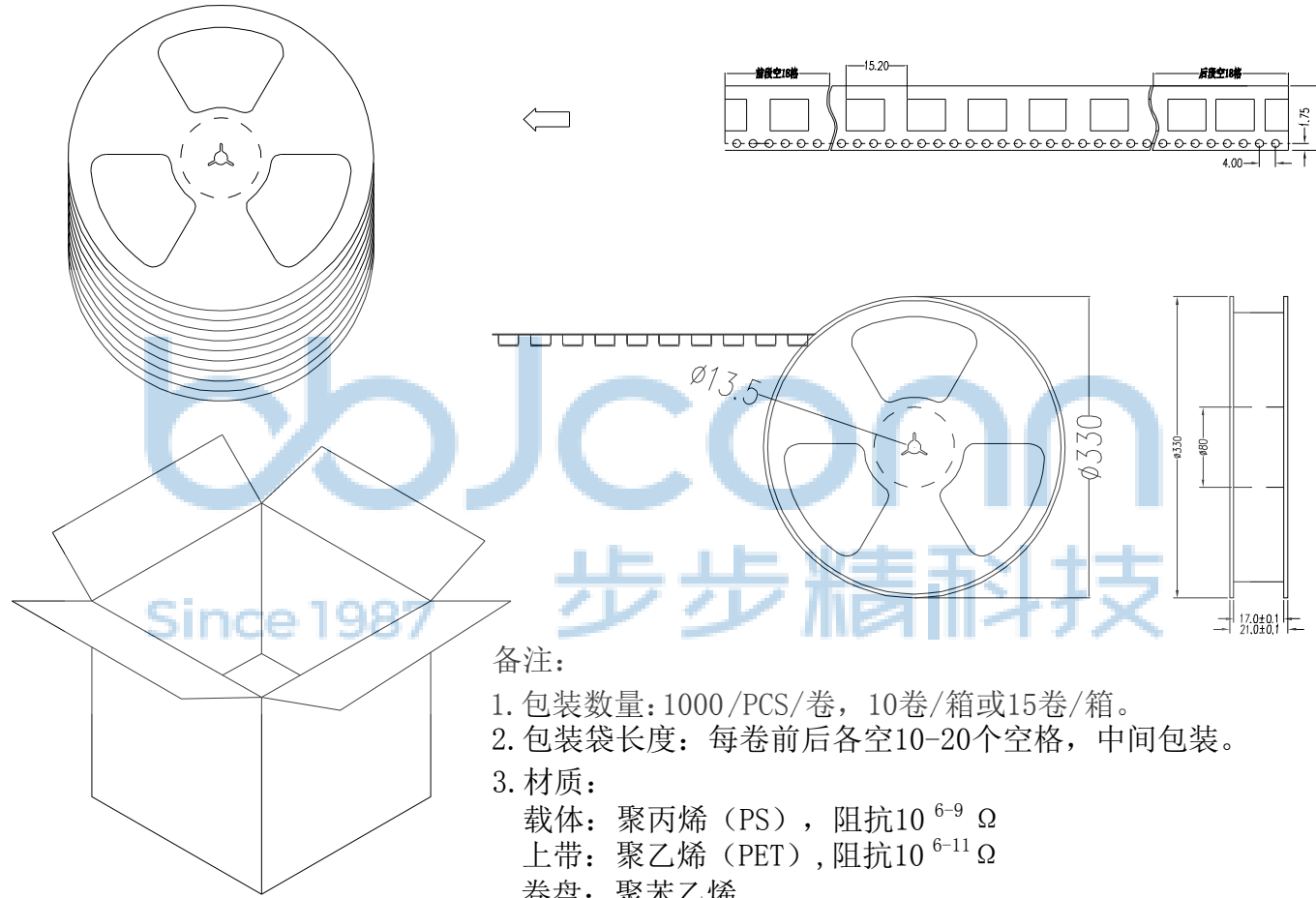


THIS DOCUMENT IS THE SOLE PROPERTY OF BBJconn Technology Co.,Ltd. Corporation AND SHOULD NOT BE USED IN WHOLE OR IN PART WITHOUT PRIOR WRITTEN PERMISSION. PDWG.NO: 0013-1

深圳市步步精科技有限公司

NAME:	针座 1.5-7P 立贴 加盖 米黄色		
PJ. NO.:	WT.05.61-85-H003		
SIZE:	A4	DRW NO.:	
FINISH:	SEE NOTES	MAT'L.:	SEE NOTES
SCALE:	N/A	REV.:	A0
UNIT:	mm	PAGE:	1/2

APPD.	JM_Zheng
CHKD.	LYX
DR.	SGF



备注:

1. 包装数量: 1000 / PCS / 卷, 10卷 / 箱或15卷 / 箱。
2. 包装袋长度: 每卷前后各空10-20个空格, 中间包装。
3. 材质:
载体: 聚丙烯 (PS), 阻抗 $10^{6-9} \Omega$
上带: 聚乙烯 (PET), 阻抗 $10^{6-11} \Omega$
卷盘: 聚苯乙烯。

纸箱规格: 345*345*23MM
纸箱规格: 345*345*35MM

THIS DOCUMENT IS THE SOLE PROPERTY OF BBJconn Technology Co.,Ltd. Corporation AND SHOULD NOT BE USED IN WHOLE OR IN PART WITHOUT PRIOR WRITTEN PERMISSION.		深圳市步步精科技有限公司 .X: ±0.38 .X': ±3" .XX: ±0.25 .X'': ±2" .XXX: ±0.13 .X''': ±1"		NAME: 针座 1.5-7P 立贴 加盖 米黄色	
APPD.	JM_Zheng	PJ. NO.: WT.05.61-85-H003 SIZE: A4 DRW NO.:		FINISH: SEE NOTES MAT'L.: SEE NOTES	
CHKD.	LYX	SCALE: N/A		REV.: A0	UNIT: mm
PDWG.NO:	0013-1	DR.	SGF	PAGE: 2/2	