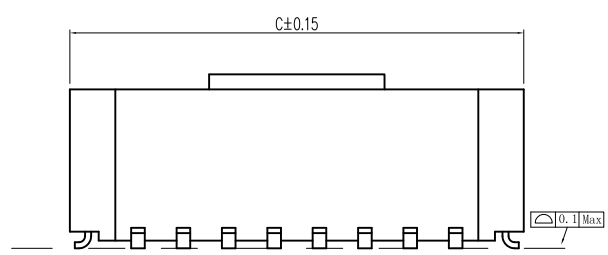
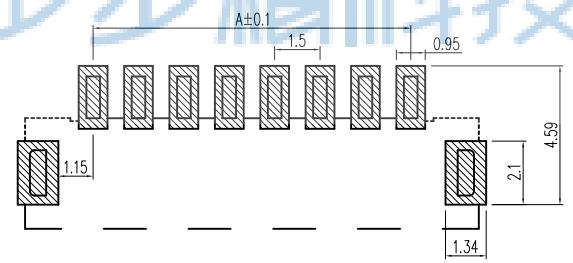
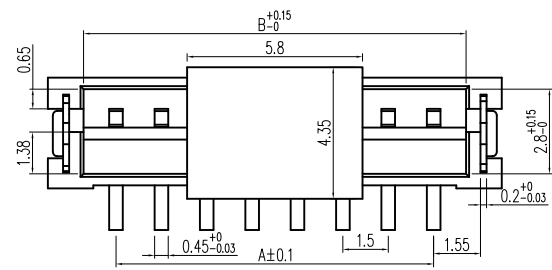
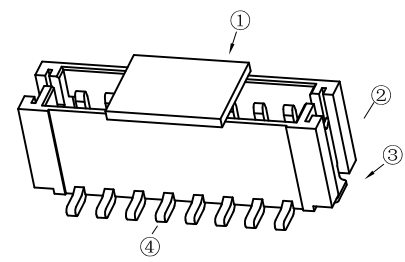
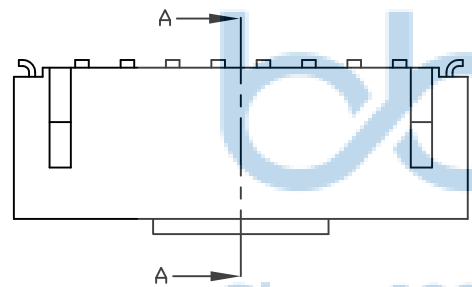
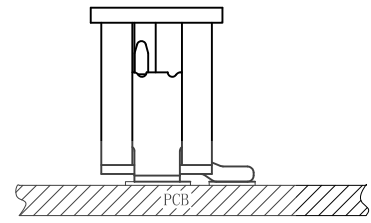
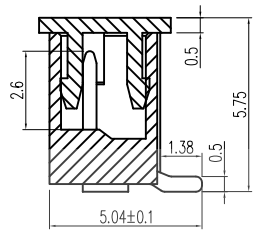


REV.	ECN NO.	CONTENT	DATE	ENGINEER
A0				

1. 技术参数:
- 1.1 额定电流: 1.0A AC/DC
 - 1.2 额定电压: 125V
 - 1.3 耐电压: 500V ACminute
 - 1.4 接触电阻: 20mΩ MAX
 - 1.5 绝缘电阻: 500MΩ MIN
 - 2. 工作温度: -25℃~+85℃



截面 A-A



Circuits	Dimensions (mm)			Circuits	Dimensions (mm)		
	A	B	C		A	B	C
1. 5LT-2P	1.5	3.66	6.02	1. 5LT-12P	16.5	18.66	21.02
1. 5LT-3P	3.0	5.16	7.52	1. 5LT-13P	18.0	20.16	22.52
1. 5LT-4P	4.5	6.66	9.02	1. 5LT-14P	19.5	21.66	24.02
1. 5LT-5P	6.0	8.16	10.52	1. 5LT-15P	21.0	23.16	25.52
1. 5LT-6P	7.5	9.66	12.02	1. 5LT-16P	22.5	24.66	27.02
1. 5LT-7P	9.0	11.16	13.52				
1. 5LT-8P	10.5	12.66	15.02				
1. 5LT-9P	12.0	14.16	16.52				
1. 5LT-10P	13.5	15.66	18.02				
1. 5LT-11P	15.0	17.16	19.52				



THIS DOCUMENT IS THE SOLE PROPERTY OF BBJconn Technology Co., Ltd. CORPORATION AND SHOULD NOT BE USED IN WHOLE OR IN PART WITHOUT PRIOR WRITTEN PERMISSION.
PDWG.NO: 0013-1

深圳市步步精科技有限公司

NAME: 针座 1.5-2P 立贴 加盖 米黄色

PJ. NO.: WT.05.61-85-H002

SIZE: A4 DRW NO.:

FINISH: SEE NOTES MAT'L.: SEE NOTES

SCALE: N/A REV.: A0 UNIT: mm PAGE: 1/2

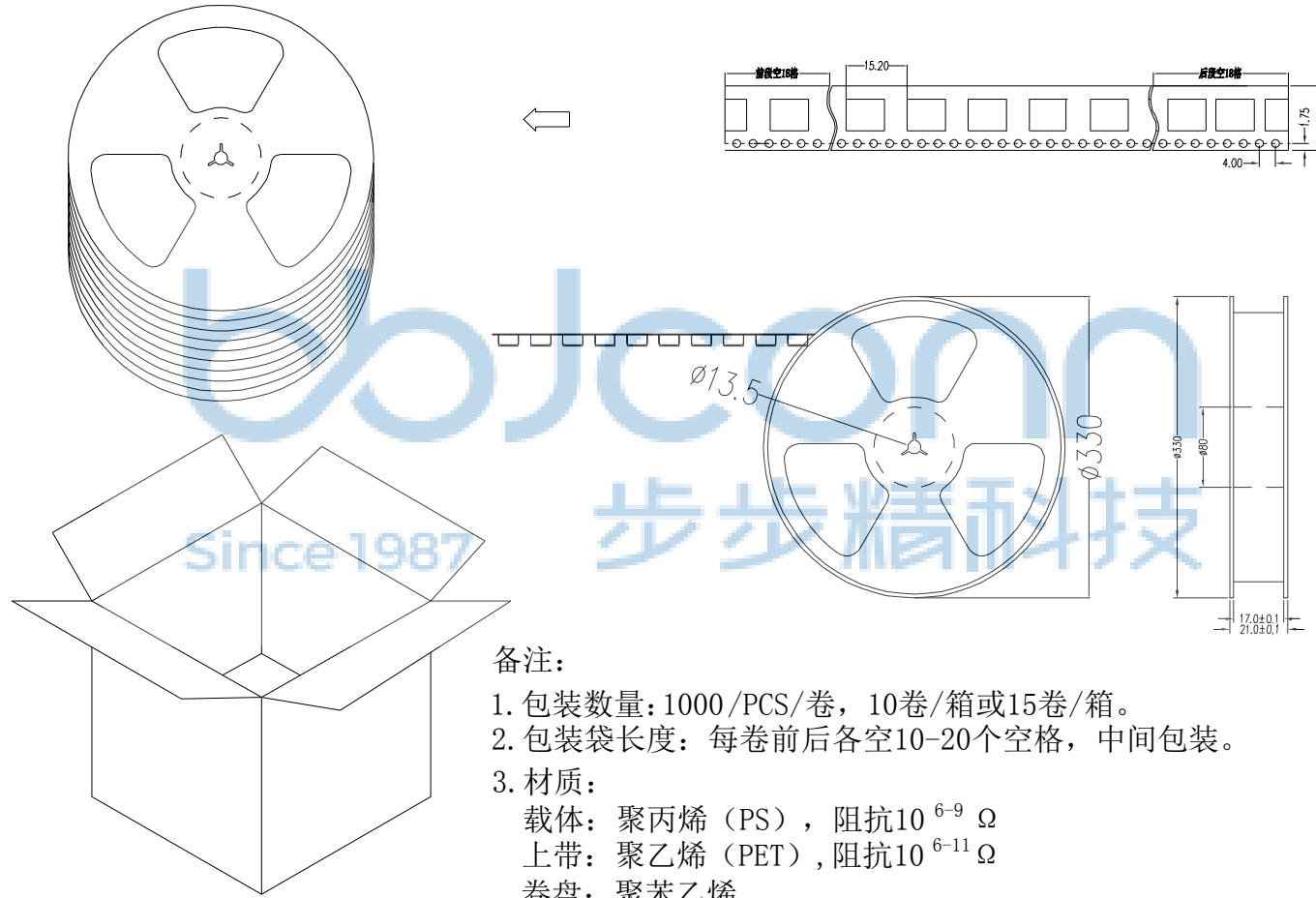
APPD. JM_Zheng

CHKD. LYX

DR. SGF

NO	物料名称	规格型号	数量(PCS)	材质	镀涂	物料编码
①	盖板	1.5	1	LCPE130i	本色	
②	基座	1.5	1	LCPE130i	本色	
③	焊片	1.5	2	黄铜	锡	
④	插针	1.5	2~20	黄铜	锡	


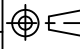
REV.	ECN NO	CONTENT	DATE	ENGINEER
A0				



备注:

1. 包装数量: 1000 / PCS / 卷, 10卷 / 箱或15卷 / 箱。
2. 包装袋长度: 每卷前后各空10-20个空格, 中间包装。
3. 材质:
载体: 聚丙烯 (PS), 阻抗 $10^{6-9} \Omega$
上带: 聚乙烯 (PET), 阻抗 $10^{6-11} \Omega$
卷盘: 聚苯乙烯。

纸箱规格: 345*345*23MM
纸箱规格: 345*345*35MM

THIS DOCUMENT IS THE SOLE PROPERTY OF BBJconn Technology Co.,Ltd. Corporation AND SHOULD NOT BE USED IN WHOLE OR IN PART WITHOUT PRIOR WRITTEN PERMISSION.		 深圳市步步精科技有限公司	
.X: ± 0.38 .XX: ± 0.25 .XXX: ± 0.13		NAME: 针座 1.5-2P 立贴 加盖 米黄色 PJ. NO.: WT.05.61-85-H002 SIZE: A4 DRW NO.: FINISH: SEE NOTES MAT'L.: SEE NOTES SCALE: N/A REV.: A0 UNIT: mm PAGE: 2/2	
APPD.	JM_Zheng		
CHKD.	LYX		
PDWG.NO:	0013-1	DR.	SGF