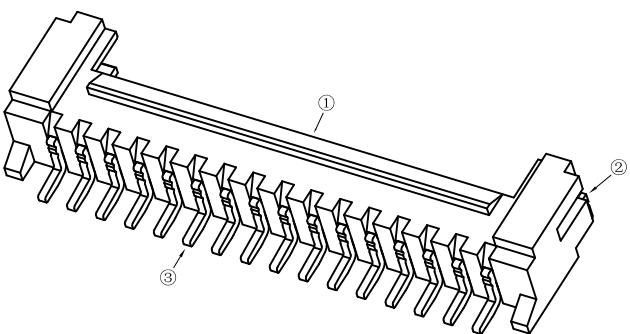
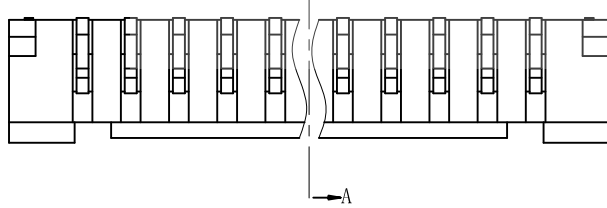
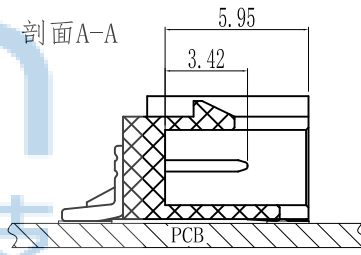
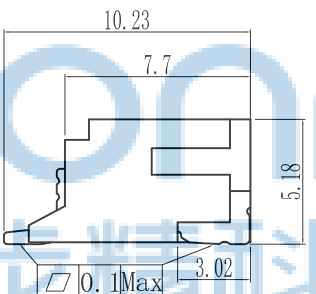
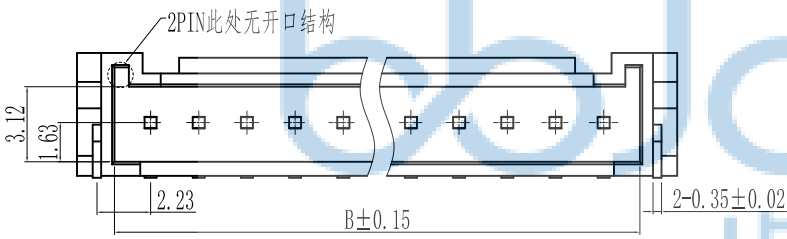
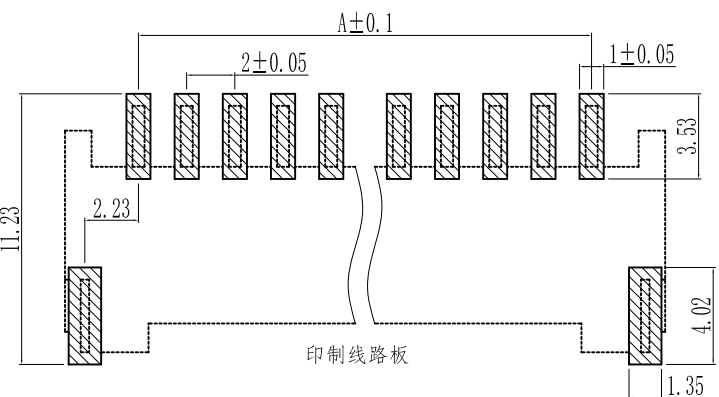
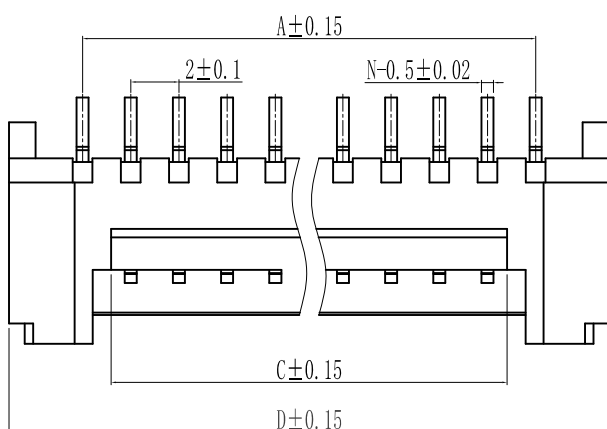


REV.	ECN NO	CONTENT	DATE	ENGINEER
AO				

1. 技术参数:
- 1.1 额定电流: 2.0A AC/DC
 - 1.2 额定电压: 250V
 - 1.3 耐电压: 1000V ACminute
 - 1.4 接触电阻: 20mΩ MAX
 - 1.5 绝缘电阻: 1000MΩ MIN
 - 2. 工作温度: -25℃~+85℃



Circuits	Dimensions (mm)			
	A	B	C	D
2PIN	2.00	4.88	2.40	7.95
3PIN	4.00	6.85	1.50	9.95
4PIN	6.00	8.85	3.50	11.95
5PIN	8.00	10.85	5.50	13.95
6PIN	10.00	12.85	7.50	15.95
7PIN	12.00	14.85	9.50	17.95
8PIN	14.00	16.87	11.50	20.00
9PIN	16.00	18.88	13.50	22.00
10PIN	18.00	20.90	15.50	24.00
11PIN	20.00	22.90	17.50	26.00
12PIN	22.00	24.92	19.50	28.00
13PIN	24.00	26.92	21.50	30.00
14PIN	26.00	28.92	23.50	32.00
15PIN	28.00	30.94	25.50	34.00
16PIN	30.00	32.95	27.50	36.00

NO	物料名称	数量 (PCS)	材质	镀涂
①	塑胶件	1 PCS	LCP	本色
②	焊片	2 PCS	黄铜	亮锡
③	PIN针	2~16 PCS	黄铜	亮锡



THIS DOCUMENT IS THE SOLE PROPERTY OF BBJconn Technology Co., Ltd. Corporation AND SHOULD NOT BE USED IN WHOLE OR IN PART WITHOUT PRIOR WRITTEN PERMISSION. PDWG.NO: 0013-1

深圳市步步精科技有限公司

NAME: 针座 2.0-9P 卧贴 带扣 米黄色

PJ. NO.: WT.01.63-73-H001

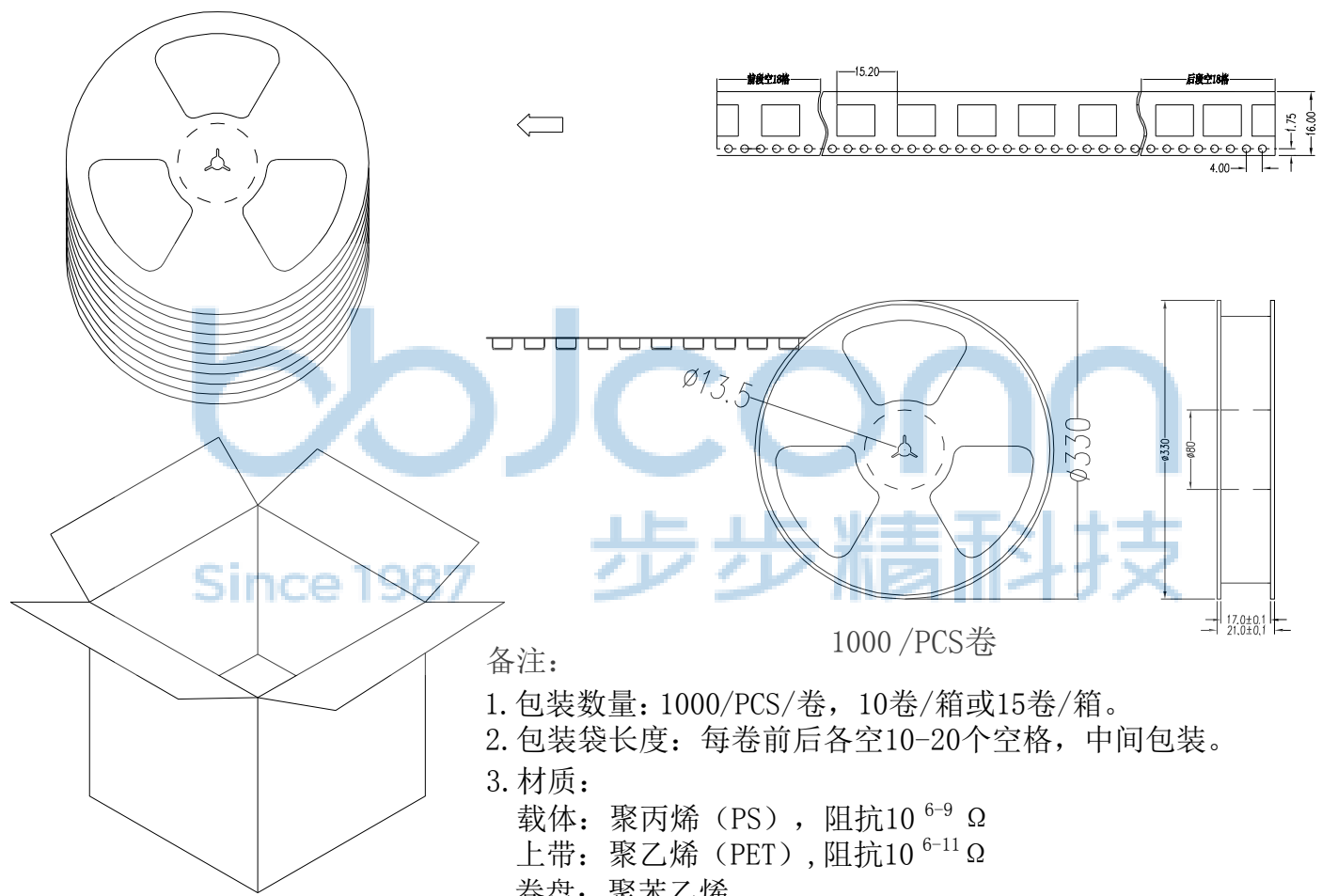
SIZE: A4 | DRW NO.:

FINISH: SEE NOTES | MAT'L.: SEE NOTES

SCALE: N/A | REV.: A0 | UNIT: mm | PAGE: 1/2

APPD. JM_Zheng
CHKD. LYX
DR. SGF

REV.	ECN NO.	CONTENT	DATE	ENGINEER
A0				



备注：
 1. 包装数量：1000/PCS/卷，10卷/箱或15卷/箱。
 2. 包装袋长度：每卷前后各空10-20个空格，中间包装。
 3. 材质：
 载体：聚丙烯（PS），阻抗 $10^{6-9} \Omega$
 上带：聚乙烯（PET），阻抗 $10^{6-11} \Omega$
 卷盘：聚苯乙烯。

纸箱规格：345*345*23MM
 纸箱规格：345*345*35MM

THIS DOCUMENT IS THE SOLE PROPERTY OF BBJconn Technology Co.,Ltd. Corporation AND SHOULD NOT BE USED IN WHOLE OR IN PART WITHOUT PRIOR WRITTEN PERMISSION.		深圳市步步精科技有限公司 .X: ± 0.38 .X': $\pm 3'$.XX: ± 0.25 .X': $\pm 2'$.XXX: ± 0.13 .XX': $\pm 1'$		NAME: 针座 2.0-9P 卧贴 带扣 米黄色	
APPD.	JM_Zheng	PJ. NO.: WT.01.63-73-H001 SIZE: A4 DRW NO.:		FINISH: SEE NOTES MAT'L.: SEE NOTES	
CHKD.	LYX	SCALE: N/A		REV.: A0	UNIT: mm
PDWG.NO:	0013-1	DR.	SGF	PAGE: 2/2	