

REV.	DESCRIPTION	NAME	DATE
A	NEWS ISSUE		

产品规格说明: (specifications)

电器特性: (Electrical characteristics)

1. 接触阻抗: (Contact Resistance)  
最大值30毫欧: (30 milliohms MAX)
2. 耐压: (Dielectric Withstanding Voltage:)  
500 伏特交流电 (500V AC AT Sea Level)
3. 绝缘阻抗: (Insulation Resistance:)  
最小值1000兆欧姆 (1000 mega-ohms MIN)

机械性能: (Mechanical:)

1. 插入力: (Insertion Force)  
最大3.57kg (3.57kg MAX)
2. 拔出力: (Unmating Force:)  
最少1.02kg (1.02 kg MIN)

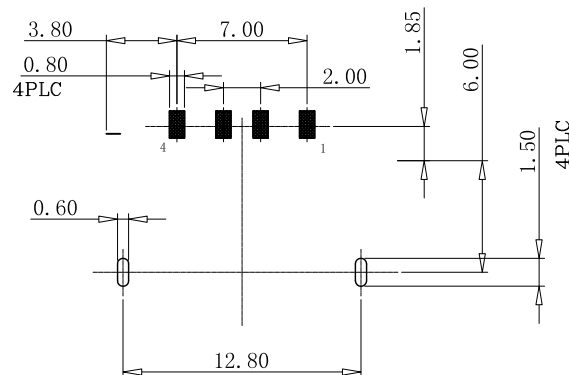
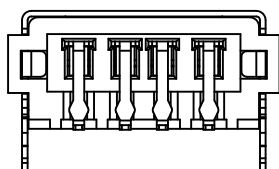
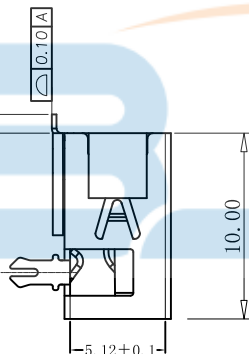
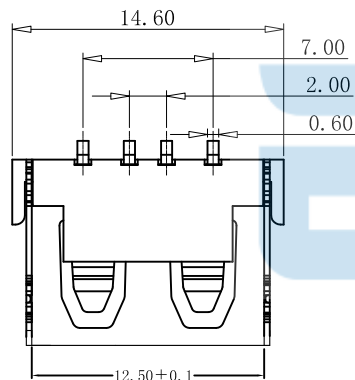
材料: Material:

1. 塑胶: (Housing): LCP黑色
2. 端子: (Contact): C2680
3. 外壳: (Shell): SPCC / C2680

电镀: (Finish):

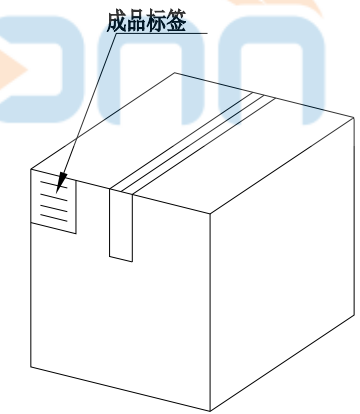
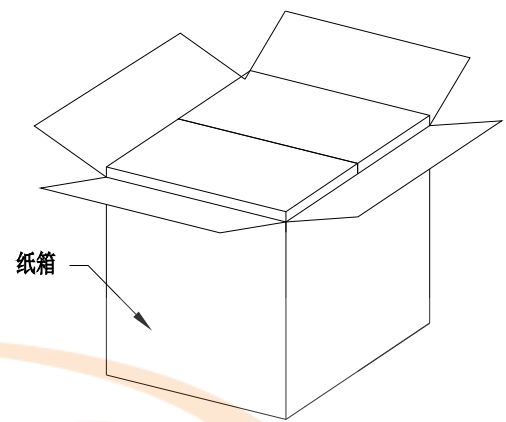
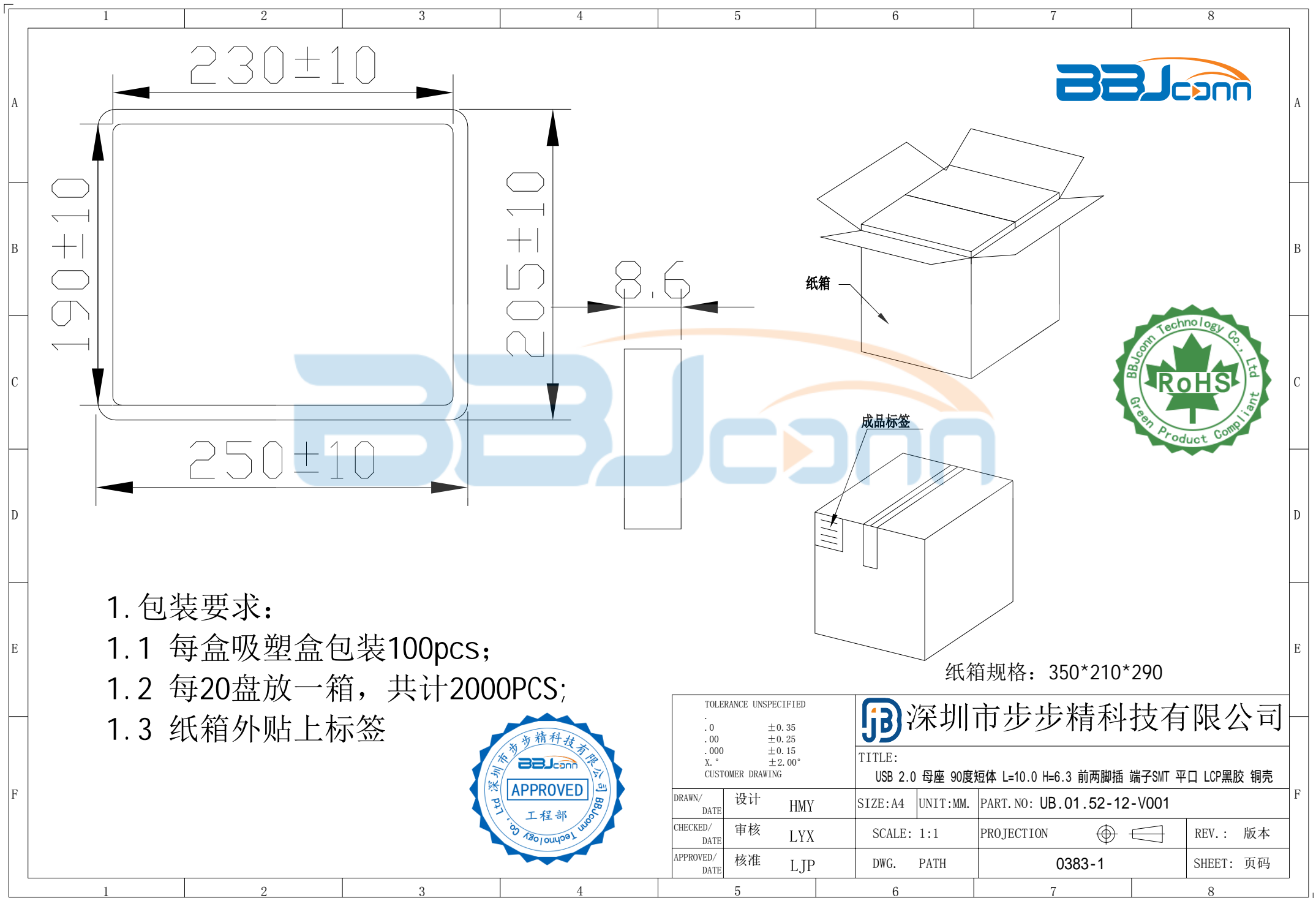
1. 端子: (Contact): Au Plated ON Contact Area Over  
50~80u Ni, Sn Plated On Solder Tails.  
接触点镀金, 脚镀锡。
2. 外壳: (Shell): Nickel Plating 镀亮镍80u''

SECTION A-A



RECOMMENDED PCB LAYOUT  
THICKNESS=1.0mm (TOLERANCES ±0.05)

TOLERANCE UNSPECIFIED		深圳市步步精科技有限公司			
X.X	±0.30	TITLE: USB 2.0 母座 90度短体 L=10.0 H=6.3 前两脚插 端子SMT 平口 LCP黑胶 铜壳			
X.XX	±0.20				
X.XXX	±0.10				
X°	±5°				
X.X°	±2°				
DRAWN/ DATE	设计 HMY	SIZE:A4	UNIT:MM.	PART.NO: UB.01.52-12-V001	
CHECKED/ DATE	审核 LYX	SCALE: 1:1		PROJECTION	REV.: 版本
APPROVED/ DATE	核准 LJP	DWG. PATH	0383-1		SHEET: 页码



纸箱

成品标签

纸箱规格：350\*210\*290

1. 包装要求:

- 1.1 每盒吸塑盒包装100pcs;
- 1.2 每20盘放一箱，共计2000PCS;
- 1.3 纸箱外贴上标签



TOLERANCE UNSPECIFIED		深圳市步步精科技有限公司 TITLE: USB 2.0 母座 90度短体 L=10.0 H=6.3 前两脚插 端子SMT 平口 LCP黑胶 铜壳								
.0	±0.35									
.00	±0.25	DRAWN/ DATE		设计	HMY	SIZE: A4	UNIT: MM.	PART. NO: UB.01.52-12-V001		
.000	±0.15	CHECKED/ DATE		审核	LYX	SCALE: 1:1		PROJECTION	REV.: 版本	
X.°	±2.00°	APPROVED/ DATE		核准	LJP	DWG. PATH	0383-1		SHEET: 页码	
CUSTOMER DRAWING										