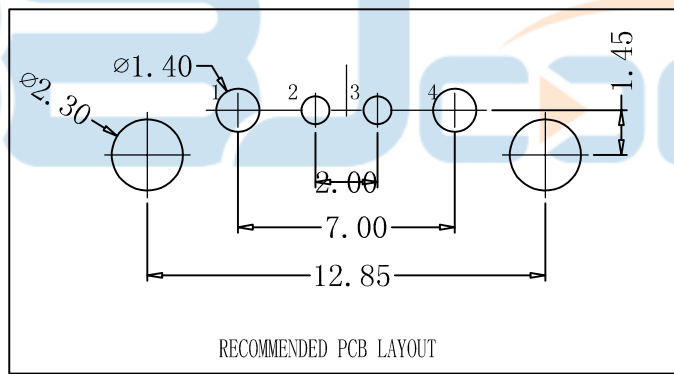
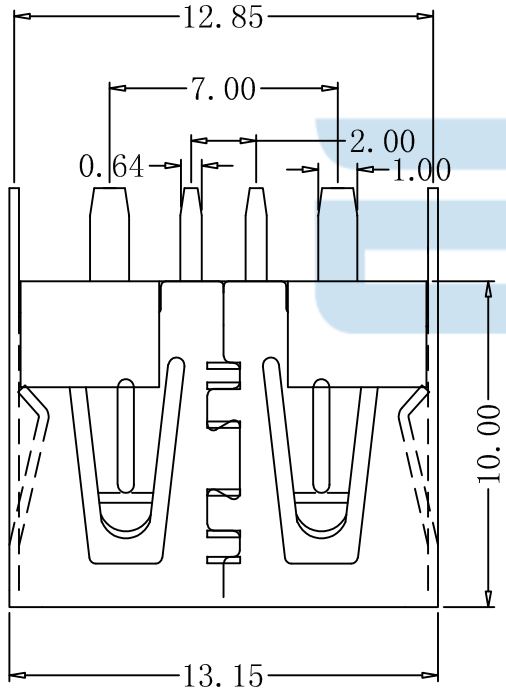
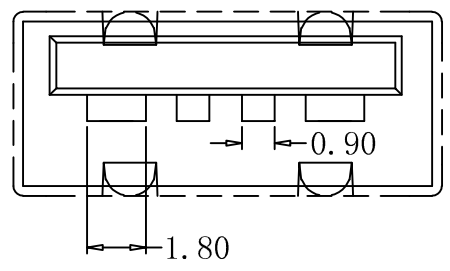
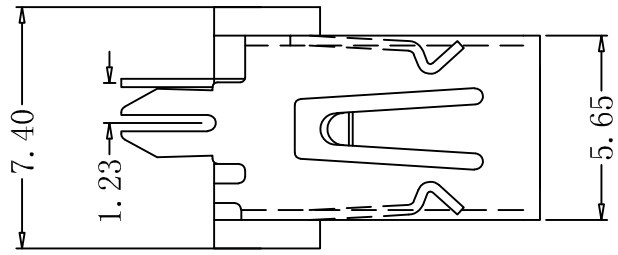




REV.	DESCRIPTION	NAME	DATE
A	NEWS ISSUE		

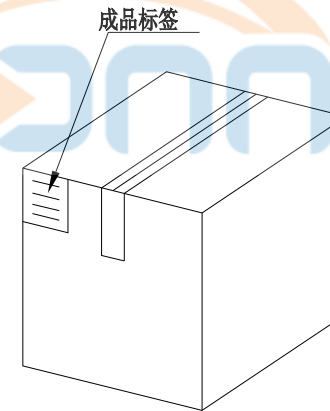
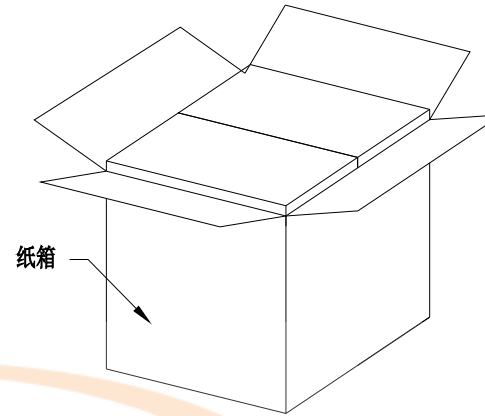
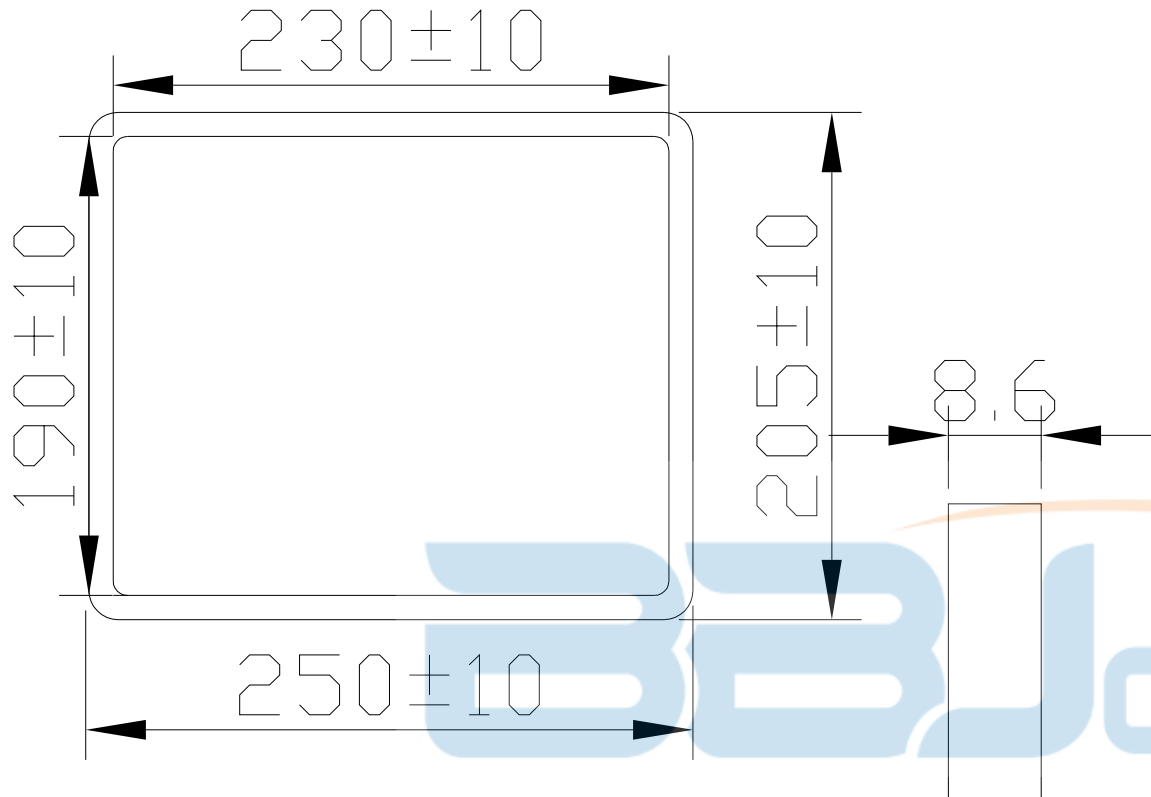


NOTE:

1. ELECTRICAL CHARACTERISTICS
  - 1-1. CONTACT RESISTANCE: 30 milliohms MAX.
  - 1-2. INSULATION RESISTANCE: 1,000 Megohms MIN.
  - 1-3. DIELECTRIC WITHSTANDING VOLTAGE: 500V AC MIN
  - 1-4. OPERATION TEMPERATURE:-20°C TO +85°C
2. MECHANICAL CHARACTERISTICS
  - 2-1. RETENTION FORCE:MIN.100gf/PIN
  - 2-2. DURABILITY: 1500 CYCLES
  - 2-3.INSERTION FORCE:3.57Kg MAXIMU AT A MAXIMUM RATE OF 12.5mm  
EXTRACTION FORCE:1.02Kg MIN AT A MAXIMUM RATE OF 12.5mm
3. MATERIAL:
  - 3-1.HOUSING: PA9T UL 94-V0. COLOR: orange
  - 3-2. CONTACT:Phosphor copper 7025 terminalT=0.25±0.02mm  
(SURFACE PLATING: G/F +Sn60-100U"+Ni40U")
  - 3-3. SHEEL: C2680/SPCC



GENERAL TOLERANCES		深圳市步步精科技有限公司				
.X:	±0.20	TITLE: USB 2.0 AF 180度 直脚直插 短体H=10.0 平口 PA9T橙胶1505c 大电流 (3A) 铁壳 端子镀金3u C7025				
.XX:	±0.10					
.XXX:	±0.05	DRAWN/ DATE	设计 TSP	SIZE:A4	UNIT:MM.	PART. NO: UB.01.12-51-V006
NGEL:	± 3.0°	CHECKED/ DATE	审核 LYX	SCALE: 1:1	PROJECTION	REV. : 版本
		APPROVED/ DATE	核准 LJP	DWG. PATH		SHEET: 页码



纸箱规格：350\*210\*290

1. 包装要求:

- 1.1 每盒吸塑盒包装100 pcs;
- 1.2 每20盘放一箱，共计2000PCS;
- 1.3 纸箱外贴上标签



TOLERANCE UNSPECIFIED		深圳市步步精科技有限公司 TITLE: USB 2.0 AF 180度 直脚直插 短体H=10.0 平口 PA9T橙胶1505c 大电流(3A) 铁壳 端子镀金3u C7025								
.0	±0.35									
.00	±0.25	DRAWN/ DATE		设计	TSP	SIZE: A4	UNIT: MM.	PART. NO: UB.01.12-51-V006		
.000	±0.15	CHECKED/ DATE		审核	LYX	SCALE: 1:1		PROJECTION	REV.: 版本	
X.°	±2.00°	APPROVED/ DATE		核准	LJP	DWG. PATH	0383-1		SHEET: 页码	
CUSTOMER DRAWING										