

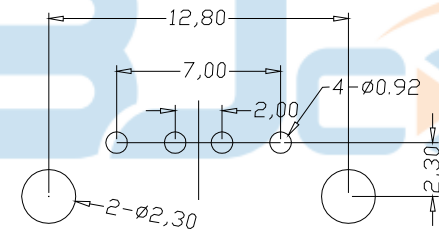
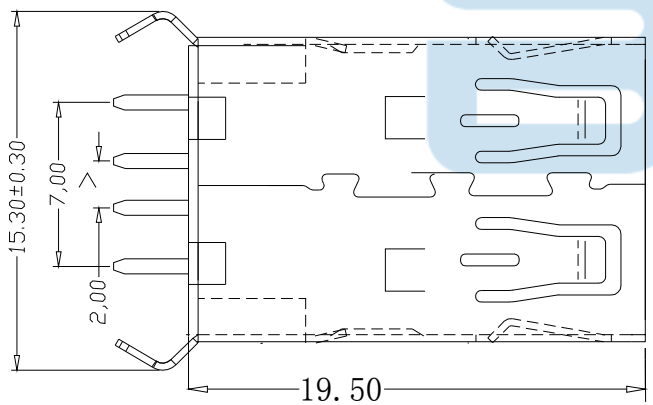
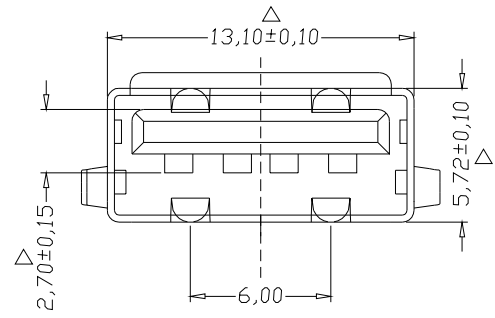
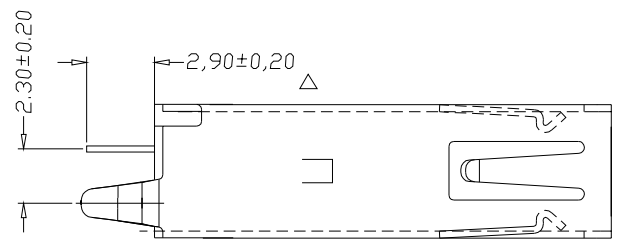


REV.	DESCRIPTION	NAME	DATE
A	NEWS ISSUE		

产品规格说明: (specifications)
 电器特性: (Electrical characteristics)
 1. 接触阻抗: (Contact Resistance)
 最大值30毫欧: (30 milliohms MAX)
 2. 耐电压: (Dielectnic Withstanding Voitage:)
 500 伏特交流电 (500V AC AT Sea Level)
 3. 绝缘阻抗: (Insulation Resistance:)
 最小值1000兆欧姆 (1000 mega-ohms MIN)
 机械性能: (Mechanical:) 3000次测试
 1. 插入力: (Insertion Force)
 最大3.57kg (3.57kg MAX)
 2. 拔出力: (Unmating Force:)
 最少1.02kg (1.02 kg MIN)

材料: Material:
 1. 塑胶: (Housing) : PBT白色防火
 2. 端子: (Contact): C2680
 3. 外壳: (Shell) : SPCC
 电镀: (Finish):
 1. 端子 (Contact): Au Plated ON Contact Area Over
 50~80U Ni, Sn Plated On Solder Tails.
 接触点镀金, 脚镀锡。
 接触点镀金 1u'' 脚镀锡。
 2. 外壳: (Shell): Nickel Plating 镀亮镍80u''

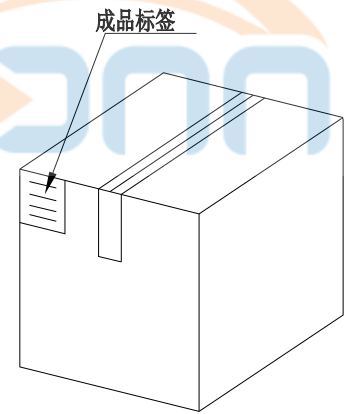
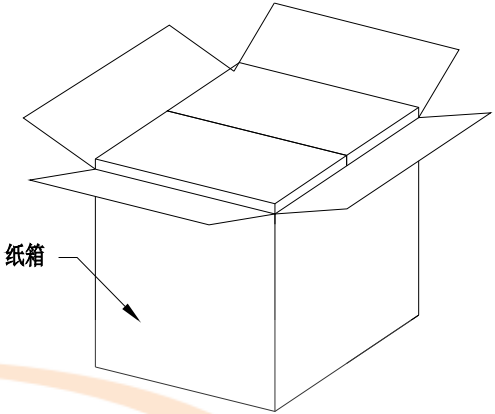
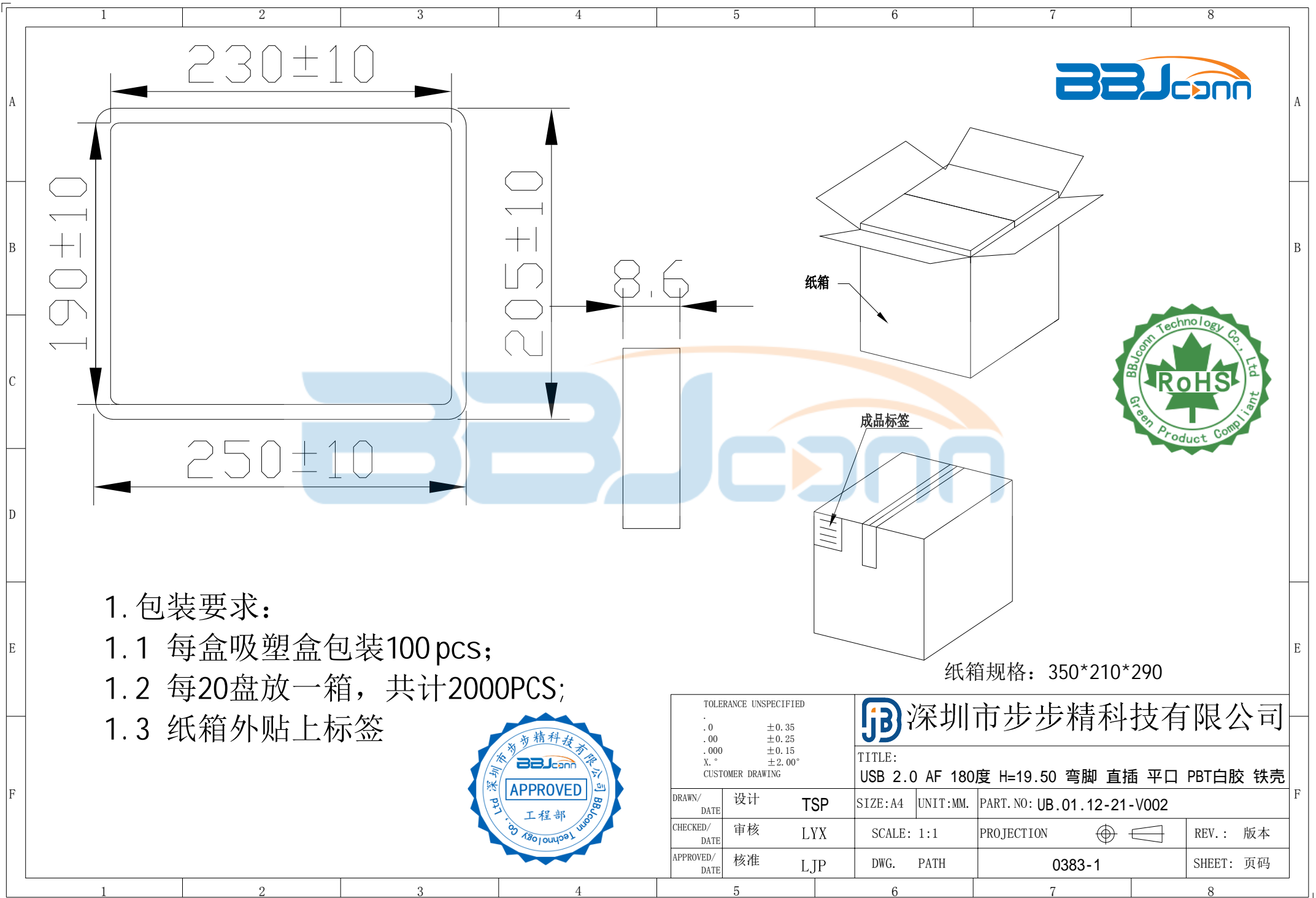
注明: 1. 标示 "△" 为IPQC重点检测尺寸。
 2. 所有物料均须符合RoHS标准。



P.C.B Layout



TOLERANCE UNSPECIFIED		深圳市步步精科技有限公司 TITLE: USB 2.0 AF 180度 H=19.50 弯脚 直插 平口 PBT白胶 铁壳			
.0	±0.35	SIZE: A4	UNIT: MM.	PART. NO: UB.01.12-21-V002	
.00	±0.25	CHECKED/ DATE	SCALE: 1:1	PROJECTION	REV.: 版本
.000	±0.15	APPROVED/ DATE	DWG. PATH	0383-1	SHEET: 页码
X.°	±2.00°	设计 TSP			
CUSTOMER DRAWING		审核 LYX			
		核准 LJP			



纸箱规格：350*210*290

1. 包装要求:

- 1.1 每盒吸塑盒包装100 pcs;
- 1.2 每20盘放一箱，共计2000PCS;
- 1.3 纸箱外贴上标签



TOLERANCE UNSPECIFIED		深圳市步步精科技有限公司 TITLE: USB 2.0 AF 180度 H=19.50 弯脚 直插 平口 PBT白胶 铁壳			
.0	±0.35	SIZE: A4	UNIT: MM.	PART. NO: UB.01.12-21-V002	
.00	±0.25	SCALE: 1:1		PROJECTION	REV.: 版本
.000	±0.15	DWG. PATH		0383-1	SHEET: 页码
X.°	±2.00°	CUSTOMER DRAWING			
DRAWN/ DATE	设计 TSP				
CHECKED/ DATE	审核 LYX				
APPROVED/ DATE	核准 LJP				