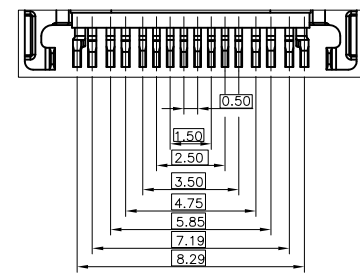
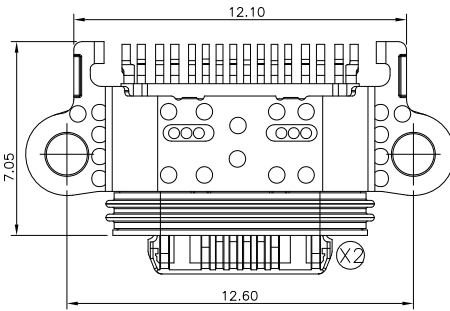
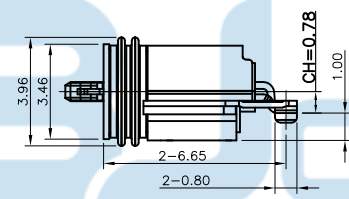
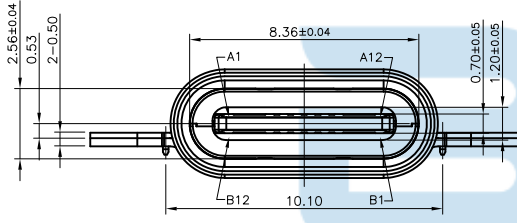


RECOMMENDED PCB LAYOUT(T=0.80)  
SCALE: 2:1(GENERAL TOLERANCE±0.05)



REV.	DESCRIPTION	NAME	DATE
A	NEWS ISSUE		

- NOTES:
- CURRENT RATING: 8A MAX. ;
  - DIELECTRIC WITHSTANDING: 100V AC MIN. ;
  - TEMPERATURE RANGE: -30° C~85° C;
  - CONTACT RESISTANCE: 40mΩ MAX. ;
  - INSULATION RESISTANCE: 100MΩ MIN. ;
  - DURABILITY: 10,000 CYCLES MIN. ;
  - INSERTION FORCE: 5N~20N;
  - EXTRACTION FORCE:  
(1) INITIAL: 8N~20N;  
(2) AFTER DURABILITY: 6N~20N.
  - PRODUCT MEET THE REQUEST OF THE RoHS.

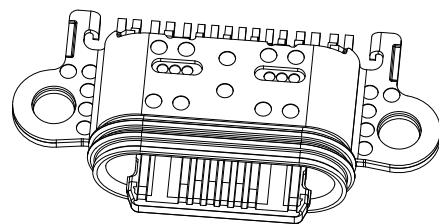


SEE VIEW A

ITEM	PART NAME	Q'TY	MATERIAL	DESCRIPTION
11	MAIN HOUSING	1 PCS	HIGH TEMPERATURE PLASTIC	BLACK
10	TOP HOUSING	1 PCS	HIGH TEMPERATURE PLASTIC	BLACK
09	BOTTOM HOUSING	1 PCS	HIGH TEMPERATURE PLASTIC	BLACK
08	RUBBER	1 PCS	LSR	BLACK
07	LOW SHELL	1 PCS	STAINLESS STEEL	SOLDER:NI PLATED
06	UPPER SHELL	1 PCS	STAINLESS STEEL	SOLDER:Au GOLD FLASH/NI PLATED
05	INNER SHELL	1 PCS	STAINLESS STEEL	SOLDER:NI PLATED
04	SOLDERING PART	1 PCS	STAINLESS STEEL	SOLDER:NI PLATED
03	PLATE	1 PCS	STAINLESS STEEL	NO PLATING
02	CONTACT B	1 SET	COPPER ALLOY	Au:SEE TABLE A/NI PLATED
01	CONTACT A	1 SET	COPPER ALLOY	Au:SEE TABLE A/NI PLATED

A1	A4	A5	A6	A7	A8	A9	A10	A11	A12		
GND	TX1+	TX1-	VBUS	CC1	D+	D-	SBU1	VBUS	RX2-	RX2+	GND
GND	RX1+	RX1-	VBUS	SBU2	D-	D+	CC2	VBUS	TX2-	TX2+	GND
B12	B11	B10	B9	B8	B7	B6	B5	B4			B1

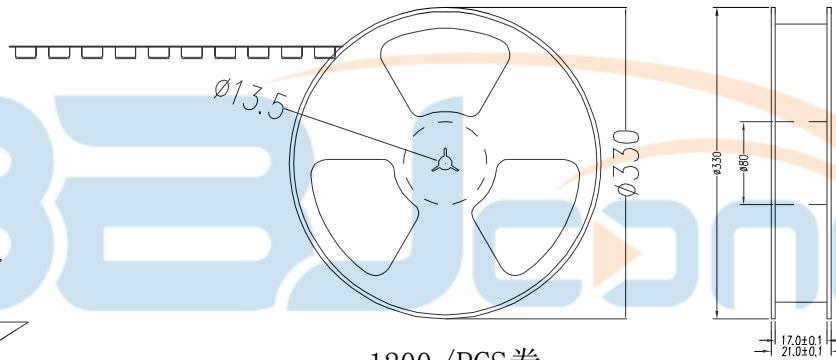
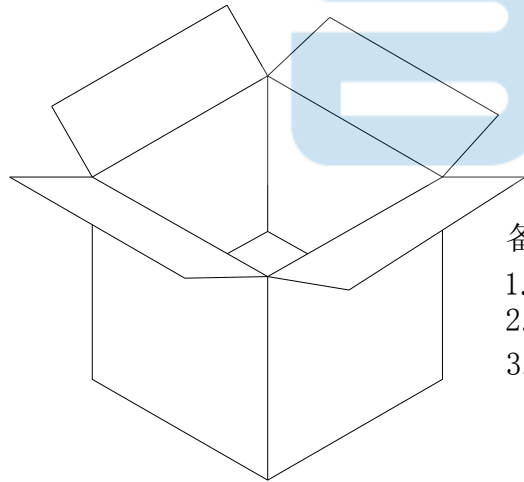
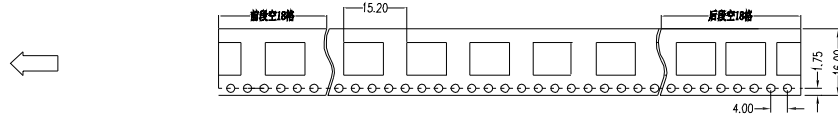
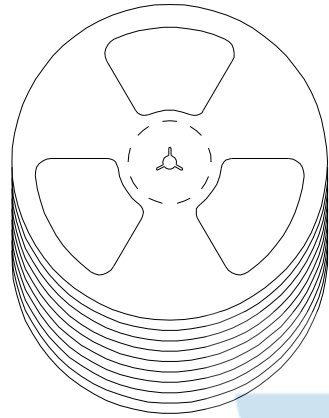
PIN ASSIGNMENT  
(FRONT VIEW)



TOLERANCE UNSPECIFIED		深圳市步步精科技有限公司 TITLE: TYPE-C 16P 防水母座 L=7.05 CH=0.78 沉板1.0 舌片外漏1.40 带双耳螺丝孔 端子SMT IP68 (13-RENO)	
.0 ±0.30 .00 ±0.20 .000 ±0.10 X.° ±2.00° CUSTOMER DRAWING	DRAWN/ DATE 设计 TSP	SIZE:A4 UNIT:MM.	PART. NO: UC.01.31-1W-0007
CHECKED/ DATE 审核 LYX	APPROVED/ DATE 核准 LJP	SCALE: 1:1 DWG. PATH	PROJECTION 
		REV.: 版本	SHEET: 页码



REV.	DESCRIPTION	NAME	DATE
A	NEWS ISSUE		



1200 /PCS卷

备注:

1. 包装数量: 1200 /PCS/卷, 10卷/箱或15卷/箱。
2. 包装袋长度: 每卷前后各空10-20个空格, 中间包装。

3. 材质:

载体: 聚丙烯 (PS), 阻抗 $10^{6-9} \Omega$

上带: 聚乙烯 (PET), 阻抗 $10^{6-11} \Omega$

卷盘: 聚苯乙烯。

纸箱规格: 345\*345\*23MM

纸箱规格: 345\*345\*35MM

TOLERANCE UNSPECIFIED		深圳市步步精科技有限公司			
.0	±0.35	TITLE: TYPE-C 16P 防水母座 L=7.05 CH=0.78 沉板1.0 舌片外漏1.40 带双耳螺丝孔 端子SMT IP68 (13-RENO)			
.00	±0.25				
.000	±0.15				
X. °	±2.00°				
CUSTOMER DRAWING					
DRAWN/ DATE	设计 TSP	SIZE: A4	UNIT: MM.	PART. NO: UC.01.31-1W-0007	
CHECKED/ DATE	审核 LYX	SCALE: 1:1		PROJECTION	REV.: 版本
APPROVED/ DATE	核准 LJP	DWG. PATH		0523-1	SHEET: 页码