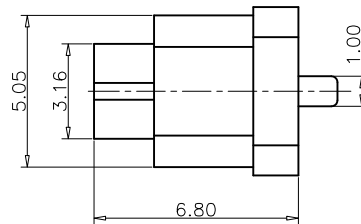
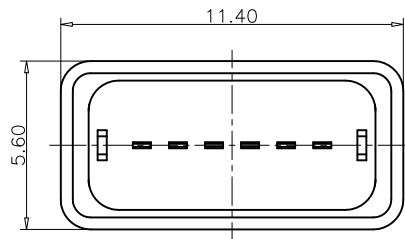
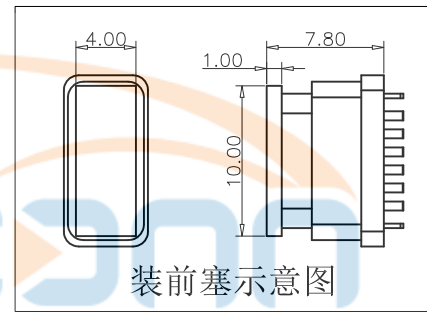
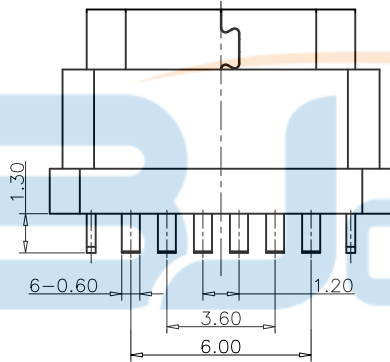
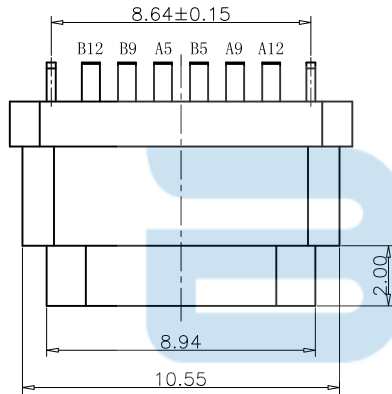


RECOMMEND P.C.B LAYOUT(COMPONENT SIDE)  
TOLERANCE FOR PCB LAYOUT IS ±0.05



USB TYPE C PIN ASSIGNMENTS

PIN NUMBER	SIGNAL NAME	PIN NUMBER	SIGNAL NAME
		B12	GND
		B9	VBUS
A5	CC1		
		B5	CC2
A9	VBUS		
A12	GND		

REV.	DESCRIPTION	NAME	DATE
A	NEWS ISSUE		

备注 (NOTE):

1. 电气特性:

- 1.1. 接触区: 接触电阻40mΩ Max, 允许10mΩ变化量. 测试条件: 20mv, 100mA下测量.
- 1.2. 接触电流: 3A VBUS引脚; 1.25A用于GND引脚; 其他引脚为0.25A.
- 1.3. 额定电压: 5V.
- 1.4. 耐电电压: 100VAC.
- 1.5. 绝缘电阻: 至少100兆欧.

2. 机械性能:

- 2.1. 插入力: 0.5-2.0Kg
- 2.2. 拔出力: 0.6-2.04Kg
- 2.3. 插拔次数: 10000次.
- 2.4. 工作环境: -20°C to +85°C.
- 2.5. 防水等级: IPX6
- 2.6. 600pcs/RELL; 6k pcs/箱



TABLE:

NO	PART	Q'TY	Material
1	SHELL	1	STAINLESS STEEL, NI PLATED
2	CONTACT	6	COPPER STEEL, TIN/Au/Ni PLATED
3	1MD HOUSING	1	HIGH TEMPERATURE RESISTANT PLASTIC BLACK UL94 V-0
4	2MD HOUSING	1	HIGH TEMPERATURE RESISTANT PLASTIC BLACK UL94 V-0

TOLERANCE UNSPECIFIED

.X: ±0.38 X°: ±3°  
.XX: ±0.25 .X°: ±1°  
.XXX: ±0.13 .XX°: ±1°

深圳市步步精科技有限公司

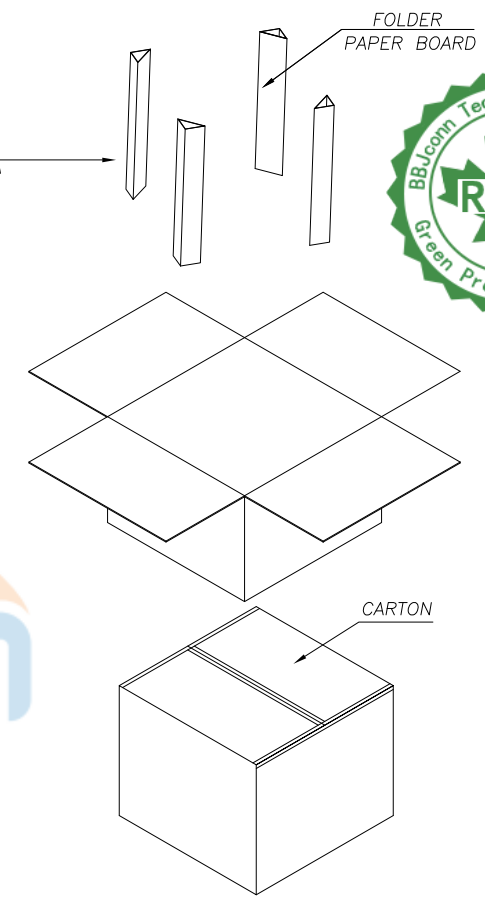
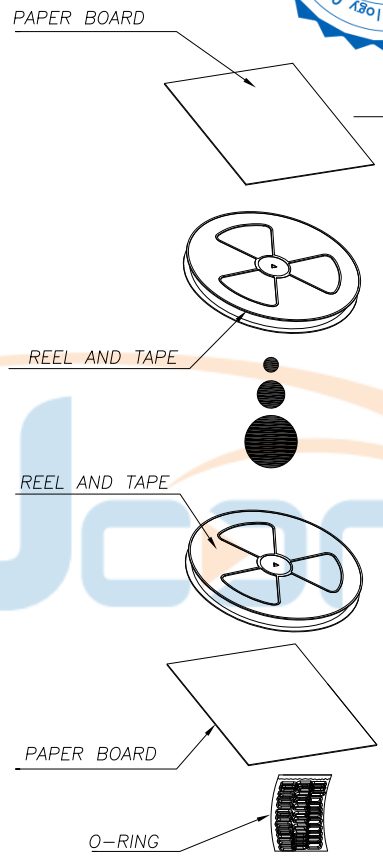
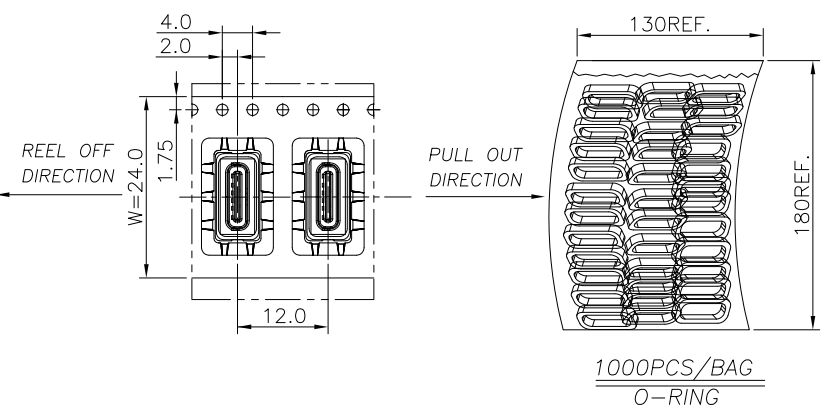
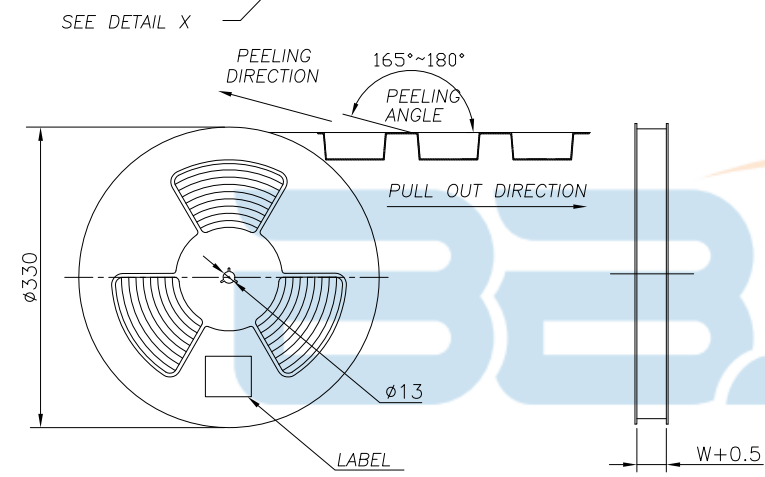
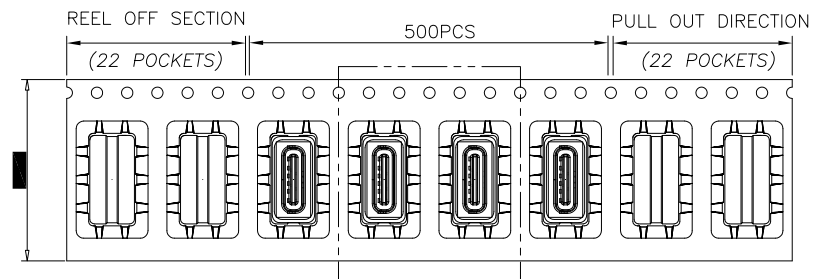
TITLE:

TYPE-C 6P 防水母座 直立式 全插 H=6.80 (端子DIP) 防水IPX6

DRAWN/ DATE	设计	TSP	SIZE:A4	UNIT:MM.	PART. NO: UC.01.13-1W-0001
CHECKED/ DATE		LYX	SCALE: 1:1	PROJECTION	REV.: 版本
APPROVED/ DATE		LJP	DWG. PATH	0478-1	SHEET: 页码



REV.	DESCRIPTION	NAME	DATE
A	NEWS ISSUE		



	REEL	CARTON
CONNECTOR (PCS)	500	5000

.X: ±0.38    .X': ±3' .XX: ±0.25    .X'': ±1" .XXX: ±0.13    .XX': ±1"		深圳市步步精科技有限公司 TITLE: TYPE-C 6P 防水母座 直立式 全插 H=6.80 (端子DIP) 防水IPX6	
DRAWN/ DATE	设计 LYX	SIZE:A4	UNIT:MM. PART. NO: UC.01.13-1W-0001
CHECKED/ DATE	HMY	SCALE: 1:1	PROJECTION
APPROVED/ DATE	LJP	DWG. PATH	0478-1
		REV.: 版本	
		SHEET: 页码	