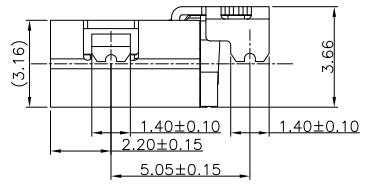
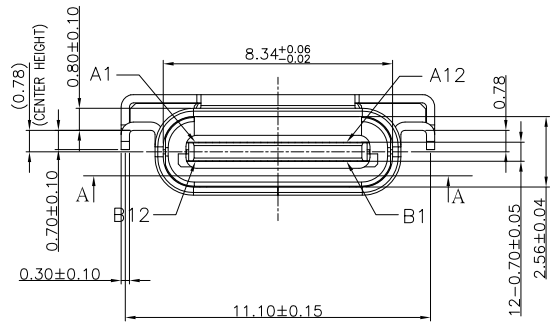
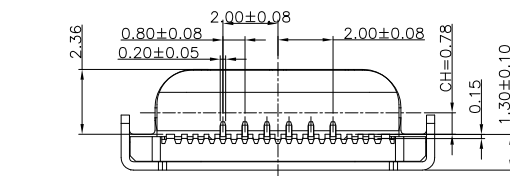
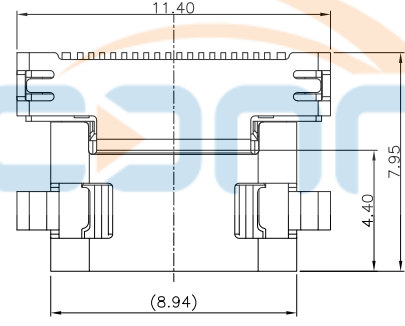
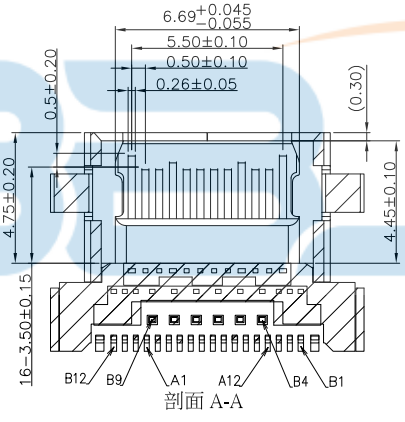
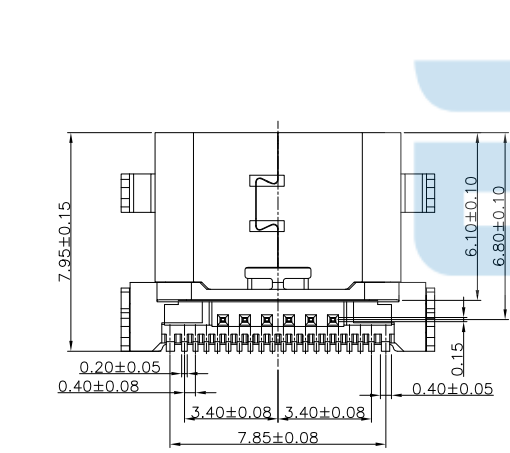




| REV. | DESCRIPTION | NAME | DATE |
|------|-------------|------|------|
| A | NEWS ISSUE | | |



- NOTES:
- MATERIAL:
 - MOLDING: LCP UL94 V-0
 - CONTACT: COPPER ALLOY.
 - PLATED SEE NOTE.
 - MECHANICAL:
 - SHELL: SUS304-H, T=0.30±0.03mm
 - 50μ" NICKEL PLATING OVER ALL.
 - SHILD: SUS304-H, T=0.12±0.03mm
 - ELECTRICAL:
 - INSERTION: 5~20N.
 - EXTRACTION: 8~20N.
 - DURABILITY: 10000 CYCLES
 - ENVIRONMENTAL:
 - CURRENT: 5A MIN FOR VBUS;
 - 0.25A MIN FOR OTHER.
 - VOLTAGE: 5VAC MAX
 - WITHSTANDING VOLTAGE: 100V AC.
 - CONTACT RESISTANCE: 40mΩ MAX.
 - INSULATION RESISTANCE: 100MΩ MIN.
 - TEMPERATURE RANGE: -30° C TO +80° C



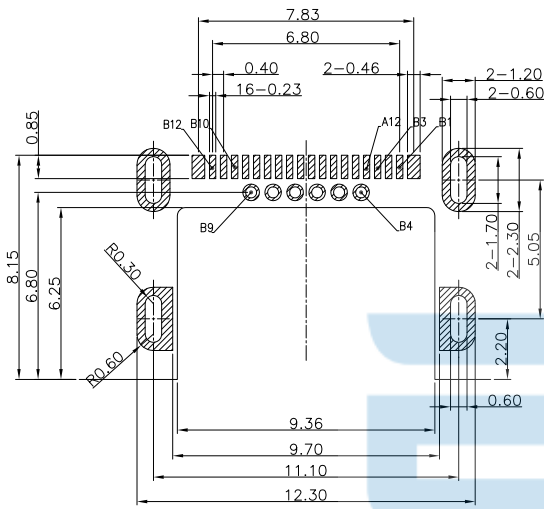
| | | | |
|---|--------|--|-------------------------------------|
| TOLERANCE UNSPECIFIED | | 深圳市步步精科技有限公司 | |
| 0. ±0.38 0.0 ±0.25 0.00 ±0.15 0.0° ±2° | | TITLE: TYPE-C 24PIN 母座 沉板2.36 L=7.95 CH=0.78 (端子DIP+SMT) | |
| DRAWN/ DATE | 设计 TSP | SIZE:A4 | UNIT:MM. PART. NO: UC.01.32-1W-0010 |
| CHECKED/ DATE | 审核 LYX | SCALE: 1:1 | PROJECTION REV.: 版本 |
| APPROVED/ DATE | 核准 LJP | DWG. PATH | 0228-1 SHEET: 页码 |



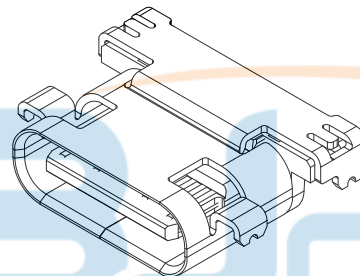
| REV. | DESCRIPTION | NAME | DATE |
|------|-------------|------|------|
| A | NEWS ISSUE | | |

USB TYPE-C FULL-FEATURED RECEPTACLE INTERFACE PIN ASSIGNMENTS

| PIN | Signal Name | Description | PIN | Signal Name | Description |
|-----|-------------|---|-----|-------------|---|
| A1 | GND | Ground return | B12 | GND | Ground return |
| A2 | SSTXp1 | Positive half of first SuperSpeed TX differential pair | B11 | SSRXp1 | Positive half of first SuperSpeed RX differential pair |
| A3 | SSTXn1 | Negative half of first SuperSpeed TX differential pair | B10 | SSRXn1 | Negative half of first SuperSpeed RX differential pair |
| A4 | VBUS | Bus Power | B9 | VBUS | Bus Power |
| A5 | CC1 | Configuration Channel | B8 | SBU2 | Sideband Use (SBU) |
| A6 | Dp1 | Positive half of the USB 2.0 differential pair-Position 1 | B7 | Dn2 | Negative half of the USB 2.0 differential pair-Position 2 |
| A7 | Dn1 | Negative half of the USB 2.0 differential pair-Position 1 | B6 | Dp2 | Positive half of the USB 2.0 differential pair-Position 2 |
| A8 | SBU1 | Sideband Use(SBU) | B5 | CC2 | Configuraation Channel |
| A9 | VBUS | Bus Power | B4 | VBUS | Bus Power |
| A10 | SSRXn2 | Negative half of second SuperSpeed RX differential pair | B3 | SSTXn2 | Negative half of second SuperSpeed TX differential pair |
| A11 | SSRXp2 | Positive half of second SuperSpeed RX differential pair | B2 | SSTXp2 | Positive half of second SuperSpeed TX differential pair |
| A12 | GND | Ground return | B1 | GND | Ground return |



RECOMMEND P.C.B LAYOUT (COMPONENT SIDE)
 TOLERANCE FOR PCB LAYOUT IS ± 0.05
 KEEP OUT AREA



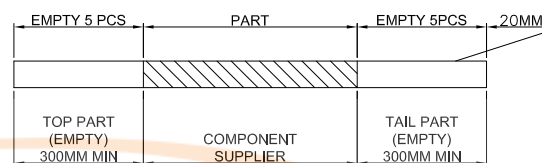
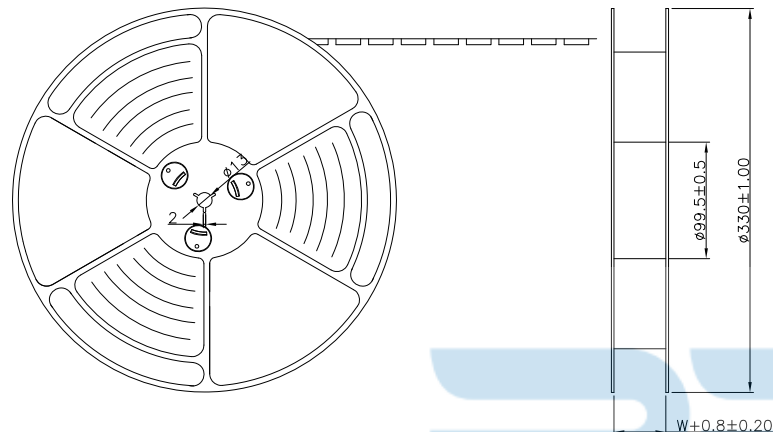
| | | | |
|-----------------------|----------------|--|-------------------------------------|
| TOLERANCE UNSPECIFIED | | 深圳市步步精科技有限公司 TITLE: TYPE-C 24PIN 母座 沉板2.36 L=7.95 CH=0.78 (端子DIP+SMT) | |
| 0. ± 0.38 | 0.0 ± 0.25 | 0.00 ± 0.15 | 0.0° $\pm 2^\circ$ |
| DRAWN/ DATE | 设计 TSP | SIZE:A4 | UNIT:MM. PART. NO: UC.01.32-1W-0010 |
| CHECKED/ DATE | 审核 LYX | SCALE: 1:1 | PROJECTION REV.: 版本 |
| APPROVED/ DATE | 核准 LJP | DWG. PATH | 0228-1 SHEET: 页码 |

| REV. | DESCRIPTION | NAME | DATE |
|------|-------------|------|------|
| A | NEWS ISSUE | | |

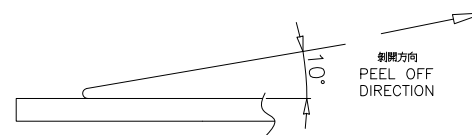
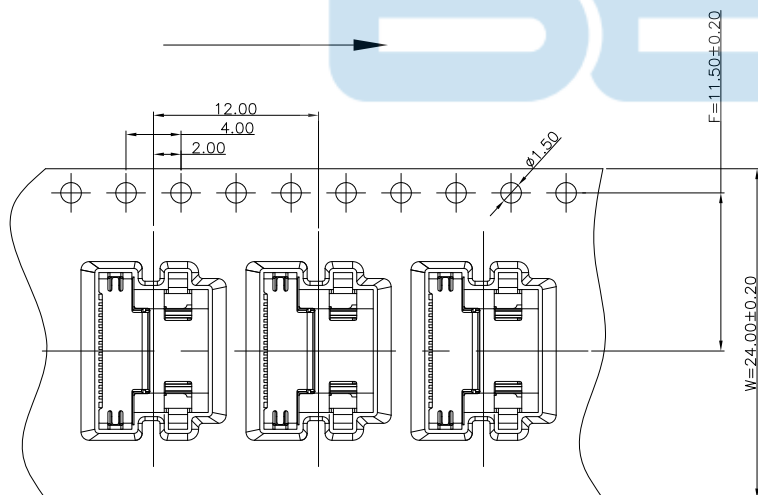
出料方向
PULL OUT DIRECTEON

NOTES

1.帶子引導長度
LEAD TAPE LENGTH
出料方向
PULL OUT DIRECTEON



2.上帶 剝力為：0.1~1.3N(10.2gf~130gf)
PEELING OFF FORCE OF TOP TAPE:0.1~1.3N(10.2gf~130gf)
出貨運輸過程中一定注意：
THIS REQUIREMENT SHOULD BE APPLIED AT SHIPMENT：
卷帶在運輸過程中不能散開
PEELING OFF SHOULD NOT BE ALLOWED DURING TRANSPORTATION

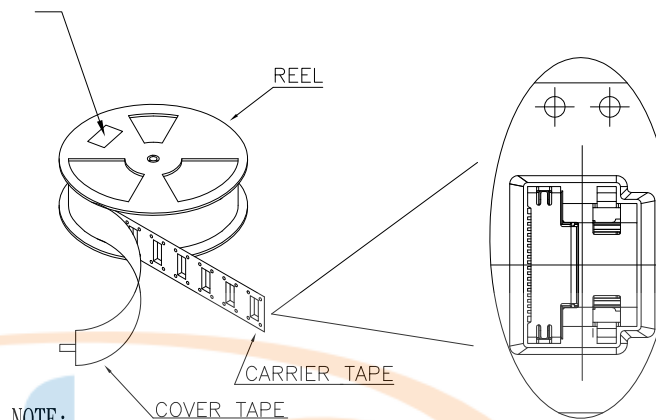
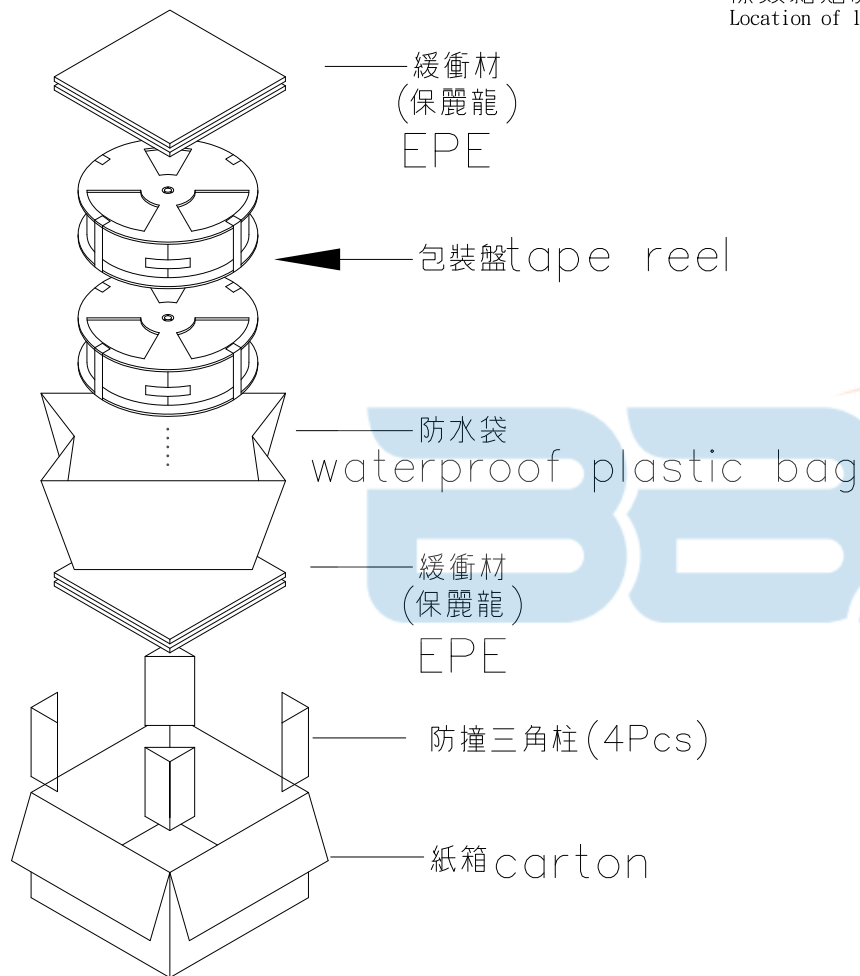


| | | | | | | | | | |
|-----------------------|---------------|---|--|----|-----|------------|----------|----------------------------|-----------|
| TOLERANCE UNSPECIFIED | | 深圳市步步精科技有限公司 TITLE: TYPE-C 24PIN 母座 沉板 2.36 L=7.95 CH=0.78 (端子DIP+SMT) | | | | | | | |
| 0. | ± 0.38 | | | | | | | | |
| 0.0 | ± 0.25 | DRAWN/ DATE | | 设计 | TSP | SIZE:A4 | UNIT:MM. | PART. NO: UC.01.32-1W-0010 | |
| 0.00 | ± 0.15 | CHECKED/ DATE | | 审核 | LYX | SCALE: 1:1 | | PROJECTION | REV.: 版本 |
| 0.0° | $\pm 2^\circ$ | APPROVED/ DATE | | 核准 | LJP | DWG. | PATH | 0228-1 | SHEET: 页码 |



| REV. | DESCRIPTION | NAME | DATE |
|------|-------------|------|------|
| A | NEWS ISSUE | | |

at small positioning hole of the carrier tape side).
 標籤黏貼處 (朝捲裝包材的小定位孔一側)
 Location of label sticking (label)



NOTE:

1. 每捲包裝數量及每箱裝箱數量如左下表格。
Packing q'ty of each reel & carton as below table shown.
2. 以上膠帶覆蓋下包裝帶經包裝機熱熔包裝
Use cover tape to cover and hot melt machine to seal up.
3. 每個紙箱放2個珍珠棉
Every carton use 2pcs EPE.
4. 將裝滿產品的卷盤放入紙箱并以膠帶封口
Put reels in the carton and use adhesive tape to seal up.



| 包裝容量 (PACKING CAPACITY) | | | 重量 WEIGHT (Kg) | | |
|-------------------------|--------------|------------|----------------|----------|----------|
| PCS/REEL | REELS/CARTON | PCS/CARTON | N.W./PCS | N.W./BOX | G.W./BOX |
| 1000 | 10 | 10000 | 0.696 | 6.96Kg | 7.5Kg |

| | | | | | |
|-----------------------|-----------|--|----------|----------------------------|-----------|
| TOLERANCE UNSPECIFIED | | 深圳市步步精科技有限公司 TITLE: TYPE-C 24PIN 母座 沉板2.36 L=7.95 CH=0.78 (端子DIP+SMT) | | | |
| 0. ±0.38 | 0.0 ±0.25 | 0.00 ±0.15 | 0.0° ±2° | | |
| DRAWN/ DATE | 设计 TSP | SIZE:A4 | UNIT:MM. | PART. NO: UC.01.32-1W-0010 | |
| CHECKED/ DATE | 审核 LYX | SCALE: 1:1 | | PROJECTION | REV.: 版本 |
| APPROVED/ DATE | 核准 LJP | DWG. PATH | 0228-1 | | SHEET: 页码 |