

REV.	DESCRIPTION	NAME	DATE
A	NEWS ISSUE		

NOTE:

- MATERIAL SPECIFICATION:
 - HOUSING: HIGH TEMPERATURE RESISTANT PLASTIC, LCP UL94 V-0.
 - CONTACTS: COPPER ALLOY C2680
 - MID PLATE: STAINLESS STEEL SUS301
 - FRONT SHELL: STAINLESS STEEL SUS304
- PLATING SPECIFICATION:
 - CONTACTS:
 - Ni 50u" MIN. UNDER PLATED OVER ALL.
 - Au PLATED ON THE FUNCTIONAL AREA OF CONTACT. (GOLD PLATING THICKNESS FOLLOW)
 - FRONT SHELL: SUS304.
 - SHIELD PLATE&EMI PLATE: CLEAR ONLY
- MECHANICAL PERFORMANCE,
 - INSERTION FORCE: 0.5~2.0kgf.
 - REMOVAL FORCE: 0.8kgf~2.0kgf.
 - DURABILITY: 10000 CYCLES.
- ELECTRICAL PERFORMANCE,
 - CURRENT RATING: 3.0A VOLTAGE RATING: 5.0V
 - LLCR:
 - VBUS & GND PINS AND OTHER PINS: 40mΩ/PIN MAX.
 - SHIELD: 50mΩ/MAX.
 - LLCR MAX. CHANGE OF ALL PINS: 10mΩ.
 - INSULATION RESISTANCE: 100MΩ MIN
 - DIELECTRIC WITHSTAND VOLTAGE, AC 100V FOR 1 MINUTE.
- ENVIRONMENTAL PERFORMANCE:
 - OPERATING TEMPERATURE: -25° C~+85° C.
 - IR REFLOW: THE PEAK TEMPERATURE ON THE BOARD SHALL BE MAINTAINED FOR 10 SECONDS AT 260° C.

PIN ASSIGNMENTS

PIN	SIGNAL NAME	PIN	SIGNAL NAME
A1	GND	B9	VBUS
A5	CC1	B5	CC2
A12	GND	B4	VBUS

L	L = 6.8
L	L = 6.5

TOLERANCE UNSPECIFIED	
.0	±0.35
.00	±0.25
.000	±0.15
X. °	±2.00°
CUSTOMER DRAWING	

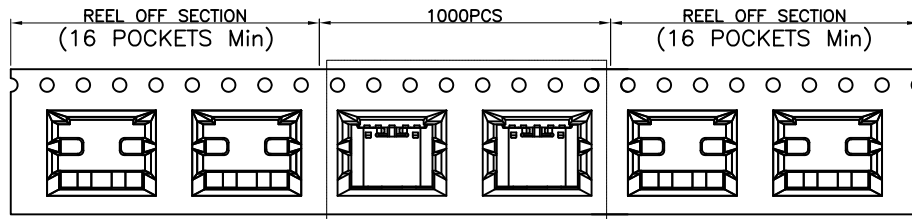
BBJconn 深圳市步步精科技有限公司

TITLE: TYPE-C 6P 母座 四脚全贴 L=6.80 CH=1.68 端子SMT 带中夹片

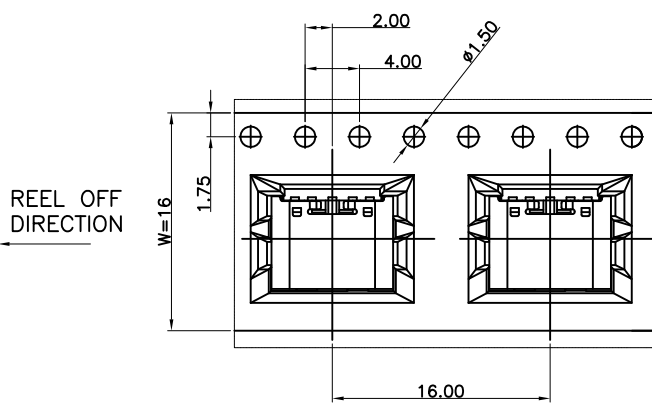
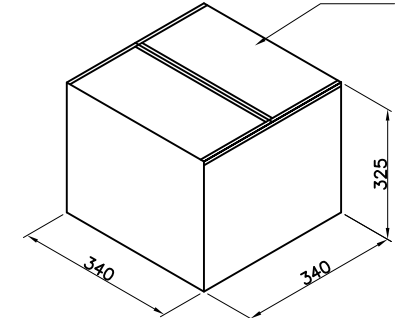
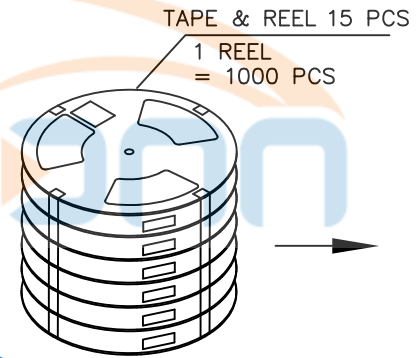
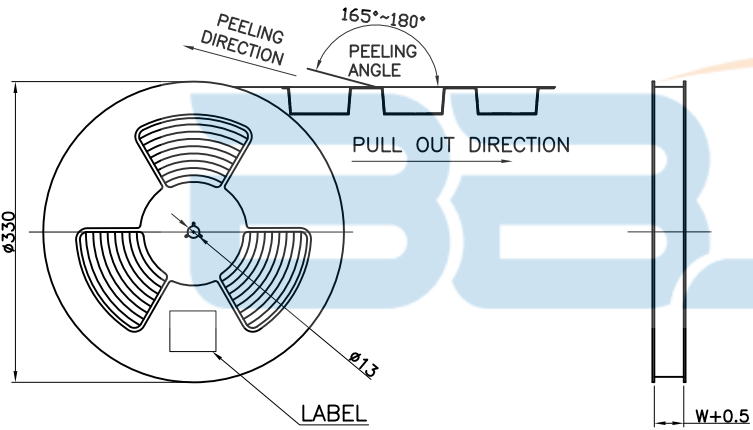
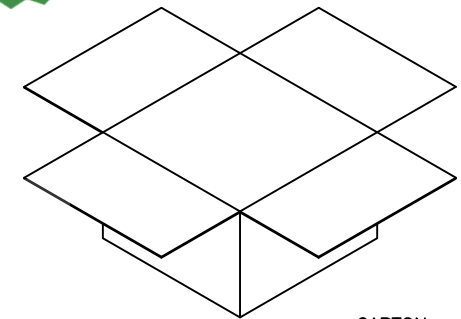
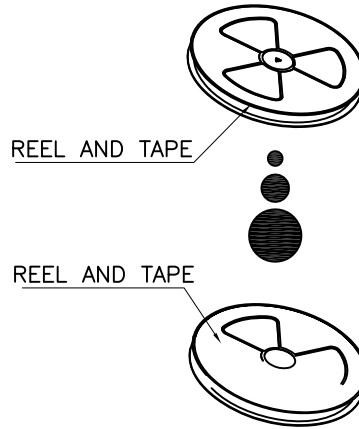
DRAWN/ DATE	设计 TSP	SIZE: A4	UNIT: MM.	PART. NO: UC.01.23-1B-0001
CHECKED/ DATE	LYX	SCALE: 1:1	PROJECTION	REV.: 版本
APPROVED/ DATE	LJP	DWG. PATH	0325-2	SHEET: 页码



REV.	DESCRIPTION	NAME	DATE
A	NEWS ISSUE		



SEE DETAIL X



	REEL	CARTON
CONNECTOR (PCS)	1000	10000

TOLERANCE UNSPECIFIED		深圳市步步精科技有限公司 APPROVED 工程部 BBJconn Technology Co., Ltd.		
.0 ±0.35 .00 ±0.25 .000 ±0.15 X. ° ±2.00° CUSTOMER DRAWING		深圳市步步精科技有限公司 TITLE: TYPE-C 6P 母座 四脚全贴 L=6.80 CH=1.68 端子SMT 带中夹片		
DRAWN/ DATE	设计 TSP	SIZE:A4	UNIT:MM.	PART.NO: UC.01.23-1B-0001
CHECKED/ DATE	LYX	SCALE: 1:1	PROJECTION	REV.: 版本
APPROVED/ DATE	LJP	DWG. PATH	0325-2	SHEET: 页码