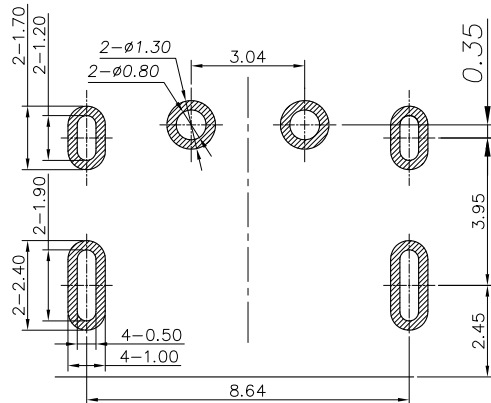
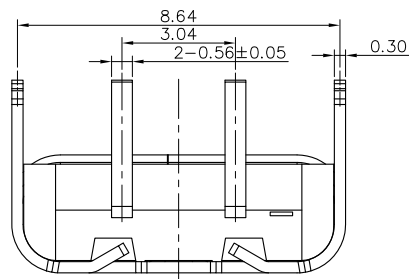
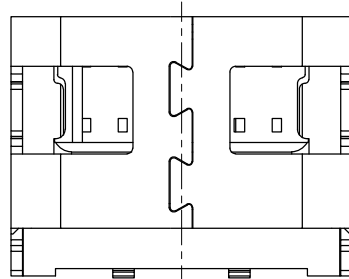
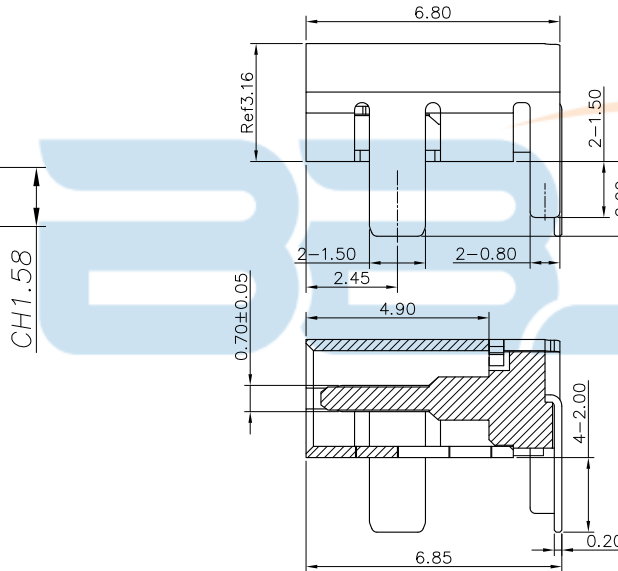
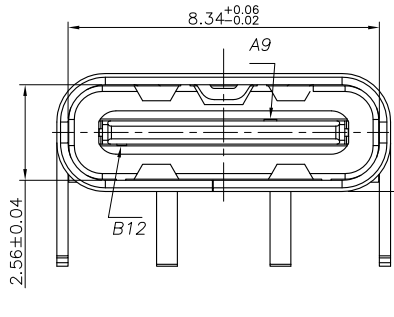
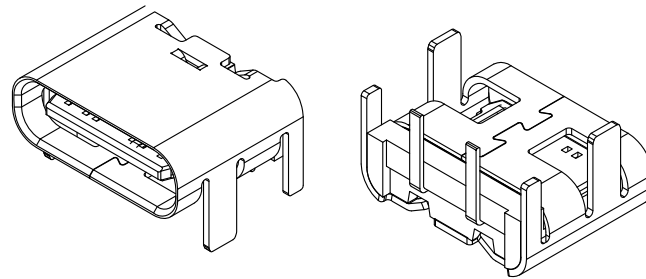
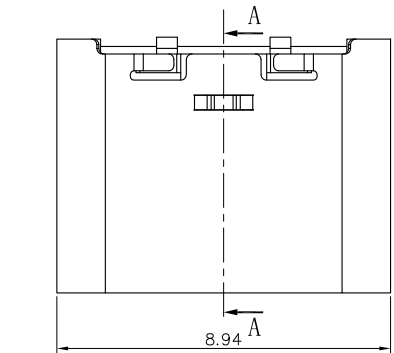




NOTE:

- 1.MATERIAL SPECIFICATION:
  - 1.HOUSING:HIGH TEMPERATURE RESISTANT PLASTIC,UL94 V-0.
  - 2.CONTACTS: COPPER ALLOY
- 2.PLATING SPECIFICATION:
  - 2-1.CONTACTS:
    - Ni 50u" MIN. UNDER PLATED OVER ALL.
    - Au PLATED ON THE FUNCTIONAL AREA OF CONTACT.
    - GOLD FLASH PLATING ON SOLDER AREA
  - 2-2.FRONT SHELL:
    - Ni 30u" MIN. UNDER PLATED OVER ALL.
- 3.MECHANICAL PERFORMANCE,
  - 3-1.INSERTION FORCE: 0.5~2.0kgf.
  - 3-2.REMOVAL FORCE: 0.8kgf~2.0kgf.
  - 3-3.DURABILITY: 3000 CYCLES.
- 4.ELECTRICAL PERFORMANCE,
  - 4-1. CURRENT RATING: 3A  
VOLTAGE RATING: 20V
  - 4-2.INSULATION RESISTANCE: 100MΩ MIN
  - 4-3.DIELECTRIC WITHSTAND VOLTAGE,AC 100V FOR 1 MINUTE.
  - 4-4.LOW CONTACT RESISTANCE: INITIAL 40MΩ  
AFTER 50MΩ
5. ENVIRONMENTAL PERFORMANCE:
  - OPERATING TEMPERATURE: -30°C~+80°C.
- 6.IR REFLOW:
  - THE PEAK TEMPERATURE ON THE BOARD SHALL BE MAINTAINED FOR 10 SECONDS AT 260°C.



RECOMMEND P.C.B LAYOUT(COMPONENT SIDE)  
TOLERANCE FOR PCB LAYOUT IS ± 0.05



USB TYPE-C PIN ASSIGNMENTS

PIN NUMBER	SIGNAL NAME
A9	VBUS
B12	GND

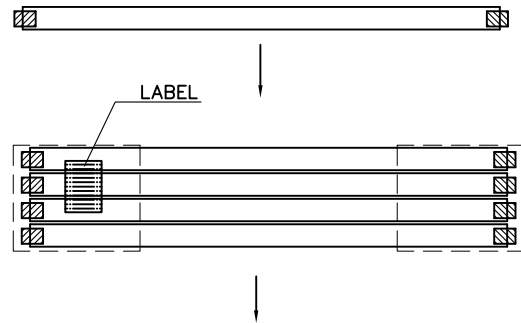
TOLERANCE UNSPECIFIED		深圳市步步精科技有限公司 TITLE: TYPE-C 2P 母座 板上四脚插 L=6.80 端子DIP CH=1.58							
.0	±0.35								
.00	±0.25	DRAWN/ DATE		设计	HMY	SIZE:A4	UNIT:MM.	PART. NO: UC.01.59-51-0001	
.000	±0.15	CHECKED/ DATE		审核	LYX	SCALE: 1:1		PROJECTION	REV.: 版本
X. °	±2.00°	APPROVED/ DATE		核准	LJP	DWG. PATH	0100-2		SHEET: 页码



一、包裝管一端先用橡皮軟塞塞住，將成品依序放入包裝管中。  
 Stop up an end of the tube with a plug and then put the products into tube in seriate order, till a tube is filled.



二、包裝管40枝用皮筋一把，每200枝用PE膜綁成一捆，標籤貼于同一方向。  
 Tie up 40 tubes with rubber per bundle with tape, and Tie up 200 tubes with PE film per bundle with tape, sticking the needful label in seriate order.



— 產品  
 (PRODUCT)



— 紙箱  
 (CARTON)  
 520\*160\*160



NOTE:

1. 每管裝入成品數量見下表。  
 The Q' ty of products per carton please see next tabel.
2. 每1個紙箱用的包裝數量詳見下表。  
 The Q' ty of products per carton please see next tabel.
3. 放入CARION 并以膠帶封口。  
 Put reels in the carton and use adhesive tape to seal up.



包裝明細表 (The detail of the packing)			
產品料號 (Product No.)	包裝容量 (Packing Capacity)		
	Pcs/Tube	Tubes/Box	Pcs/Box
	50	400	20000

TOLERANCE UNSPECIFIED		深圳市步步精科技有限公司 TITLE: TYPE-C 2P 母座 板上四脚插 L=6.80 端子DIP CH=1.58	
.0	±0.35	SIZE: A4	UNIT: MM.
.00	±0.25	PART. NO:	UC.01.59-51-0001
.000	±0.15	SCALE: 1:1	PROJECTION
X. °	±2.00°	DWG. PATH	0100-2
CUSTOMER DRAWING		REV.: 版本	
DRAWN/ DATE	设计 HMY	SHEET: 页码	
CHECKED/ DATE	审核 LYX		
APPROVED/ DATE	核准 LJP		